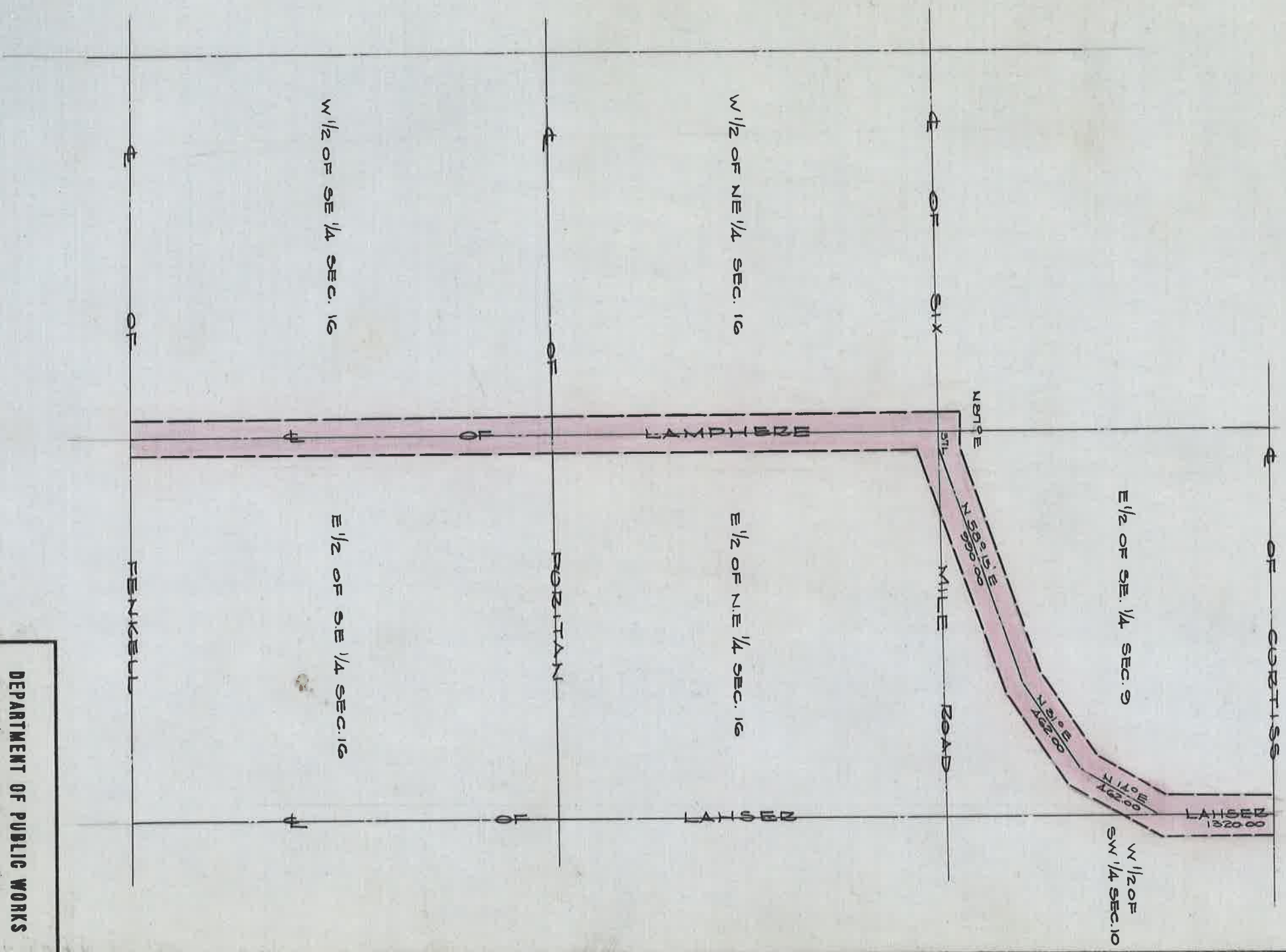


OPENING OF LAMPHERE, REDFORD & LAHSEZ

FROM FENKELL TO CURTISS
A FISHER & JESSE REID REDFORD TWP. HWY. COMMS.

OCT. 27, 1849



DEPARTMENT OF PUBLIC WORKS
CITY ENGINEER'S OFFICE
412 CITY HALL
SCALE 1"=NO SCALE

ST. OFG BK. G - PG. 147.
ARJ

G.F.C.