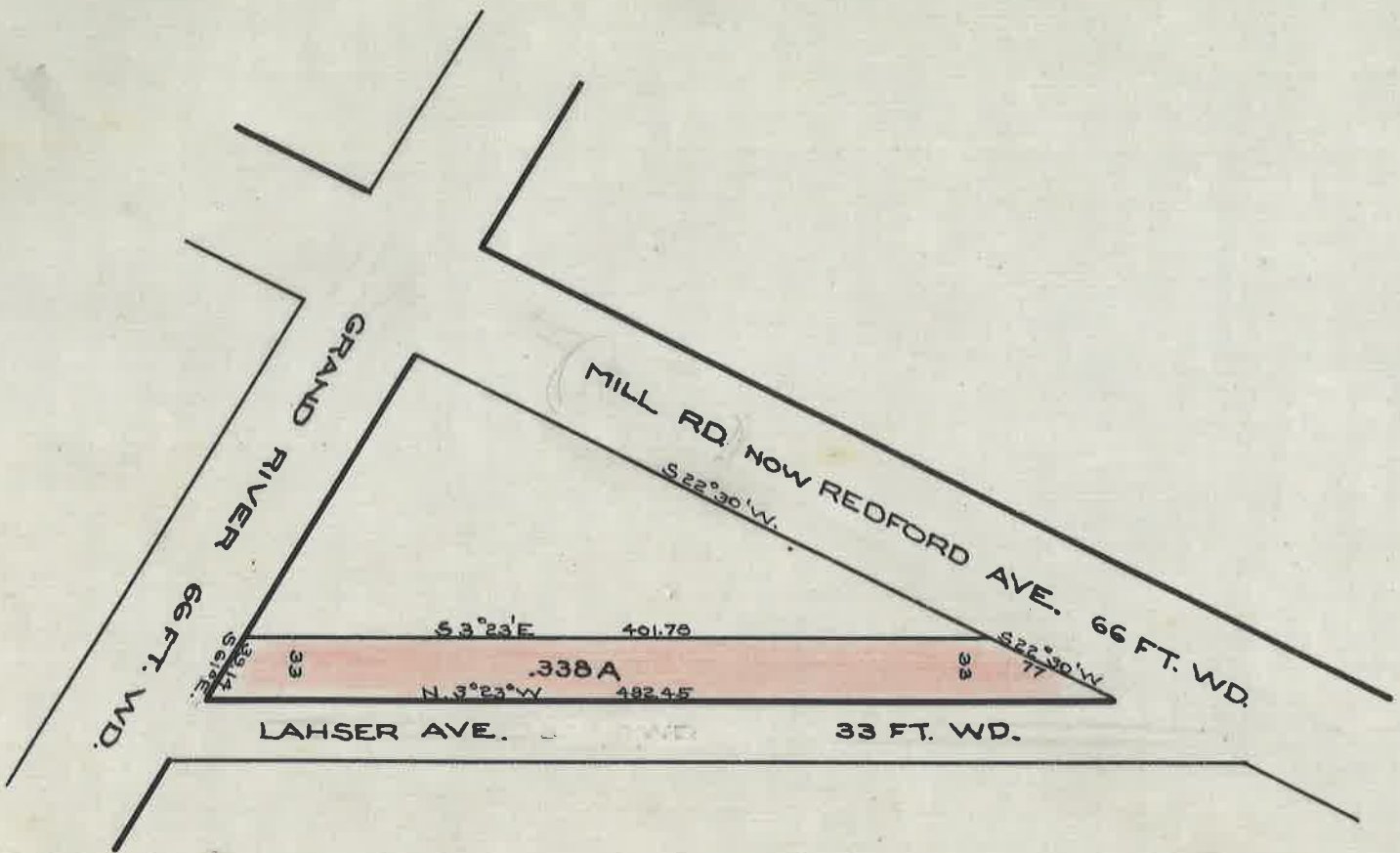


WIDENING OF LAHSER AVE.
 FROM GRAND RIVER AVE. TO MILL RD NOW REDFORD AVE.
 RECORD OF HIGHWAY COMMISSIONER - REDFORD TWP.
 OCT. 18, 1900



DEPARTMENT OF PUBLIC WORKS
 CITY ENGINEERS OFFICE
 412 CITY HALL

SCALE 1" = 100'
 4-8-29

ST. OFG - BK. G - PG. 142.
 A.R.P.

A.P.