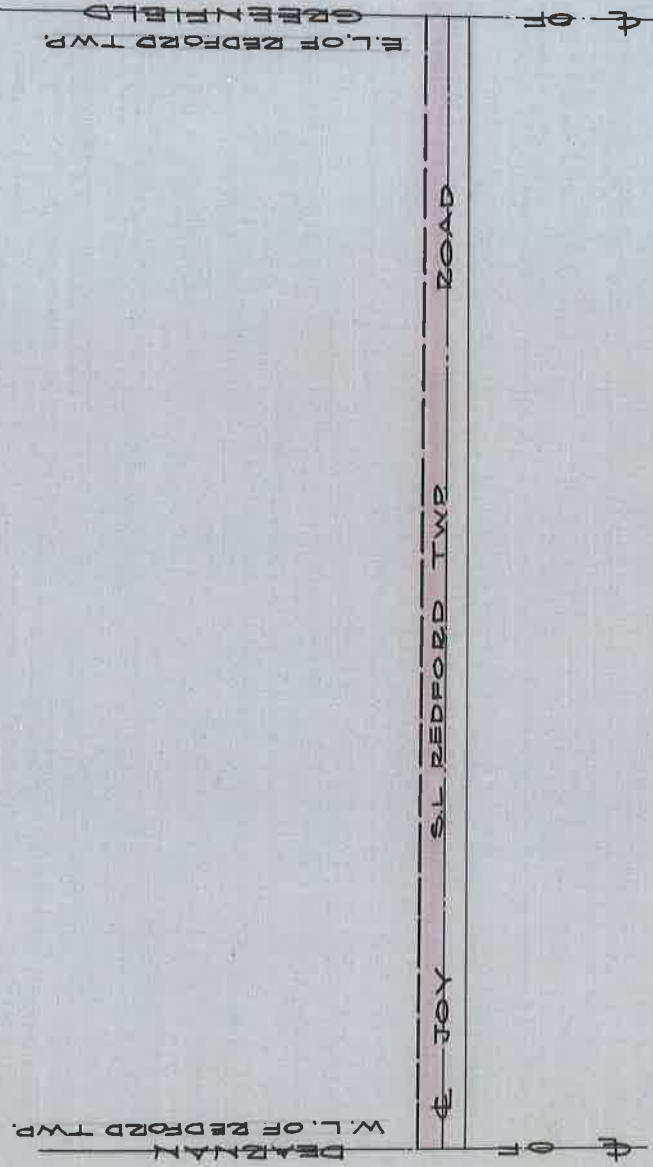


OPENING OF N¹/₂ OF JOY ROAD (RDS. 21-29)

FROM S.W CORNER TO S.E CORNER OF REDFORD TWP.
H. WILLMARTH & DAVID LYON REDFORD TWP. HWY. COMMS.
APRIL 4, 1895.



DEPARTMENT OF PUBLIC WORKS
CITY ENGINEER'S OFFICE
412 CITY HALL
SCALE 1" = 100' SCALE

ST. OPS. BKS - PS. 144
A.P.F.

G.F.C.