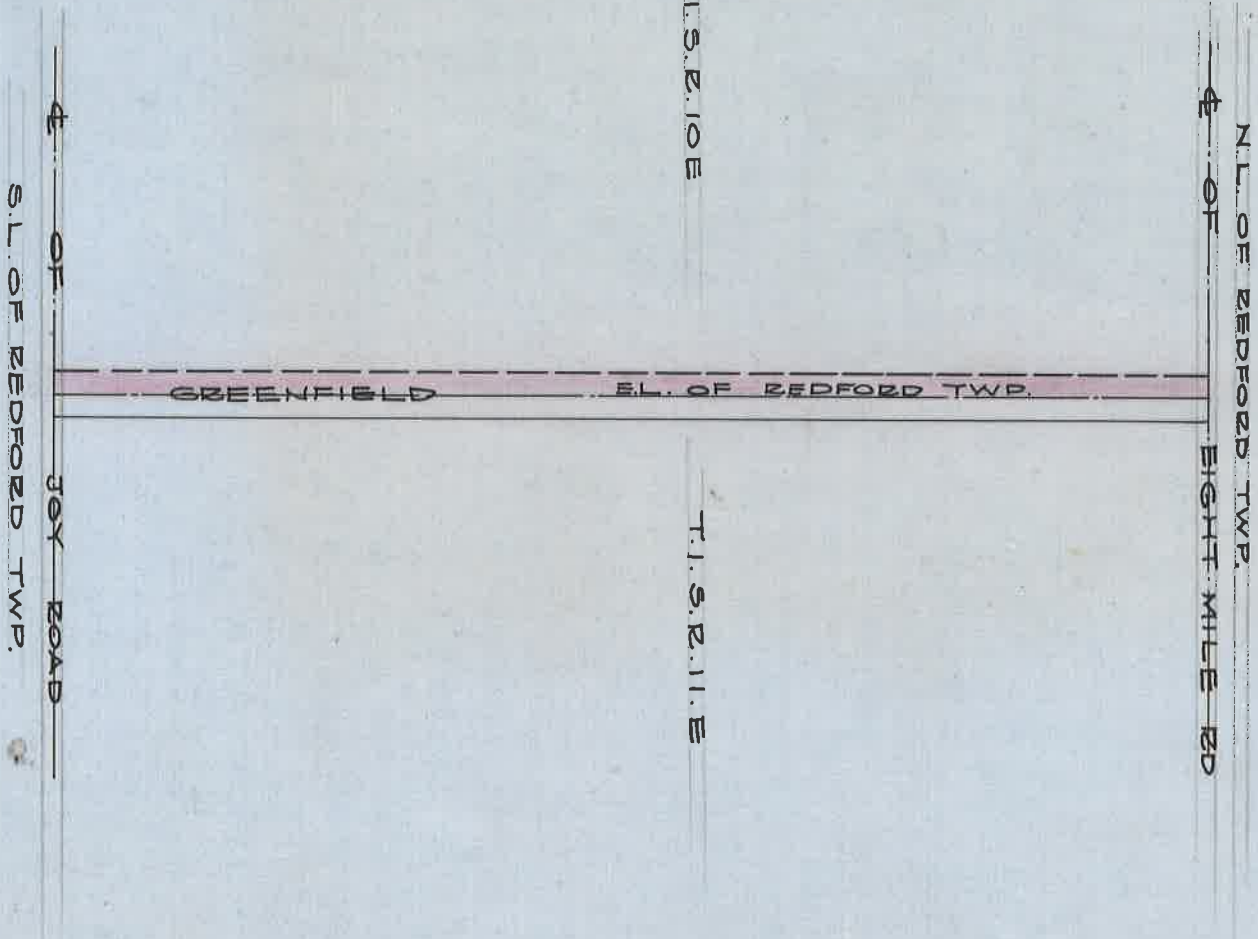


OPENING OF GREENFIELD AVE (RDS. 21-29)

FROM JOY ROAD TO EIGHT MILE ROAD
H. WILLMARTH & DAVID LYON REDFORD HWY COMMS.
APRIL 4, 1835.



DEPARTMENT OF PUBLIC WORKS
 CITY ENGINEER'S OFFICE
 412 CITY HALL
 SCALE 1"=NO. SCALE

ST. OFC. BR. 0 - PG. 140
 APR 5

G.F.C.