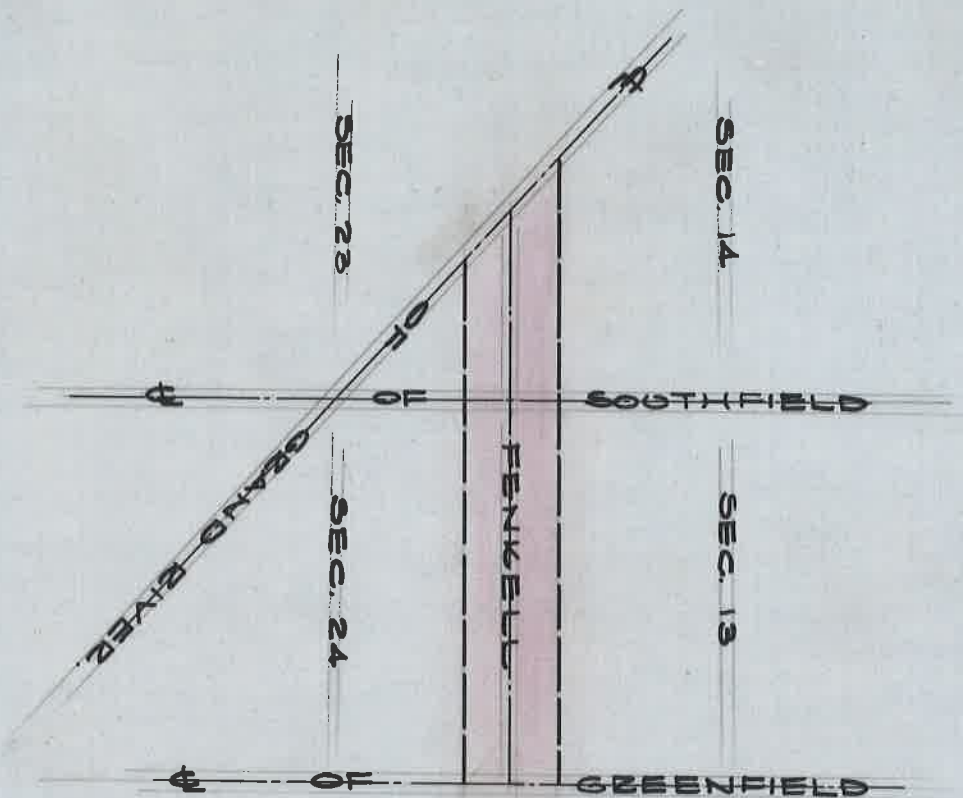


OPENING OF FENKELL AVE (RDS. 21-29)  
FROM GREENFIELD TO & OF GRAND RIVER  
H. WILLMARTH & DAVID LYON REDFORD HWY COMMS.  
APRIL 4, 1895  
Pgs. 345-346 REDFORD TWP. PROC. 1918-1923.  
MARCH 3, 1922.



DEPARTMENT OF PUBLIC WORKS  
CITY ENGINEER'S OFFICE  
412 CITY HALL  
SCALE 1" = NO. SCALE

ST. OF G. BK. G. - PG. 141.  
A.P. 5