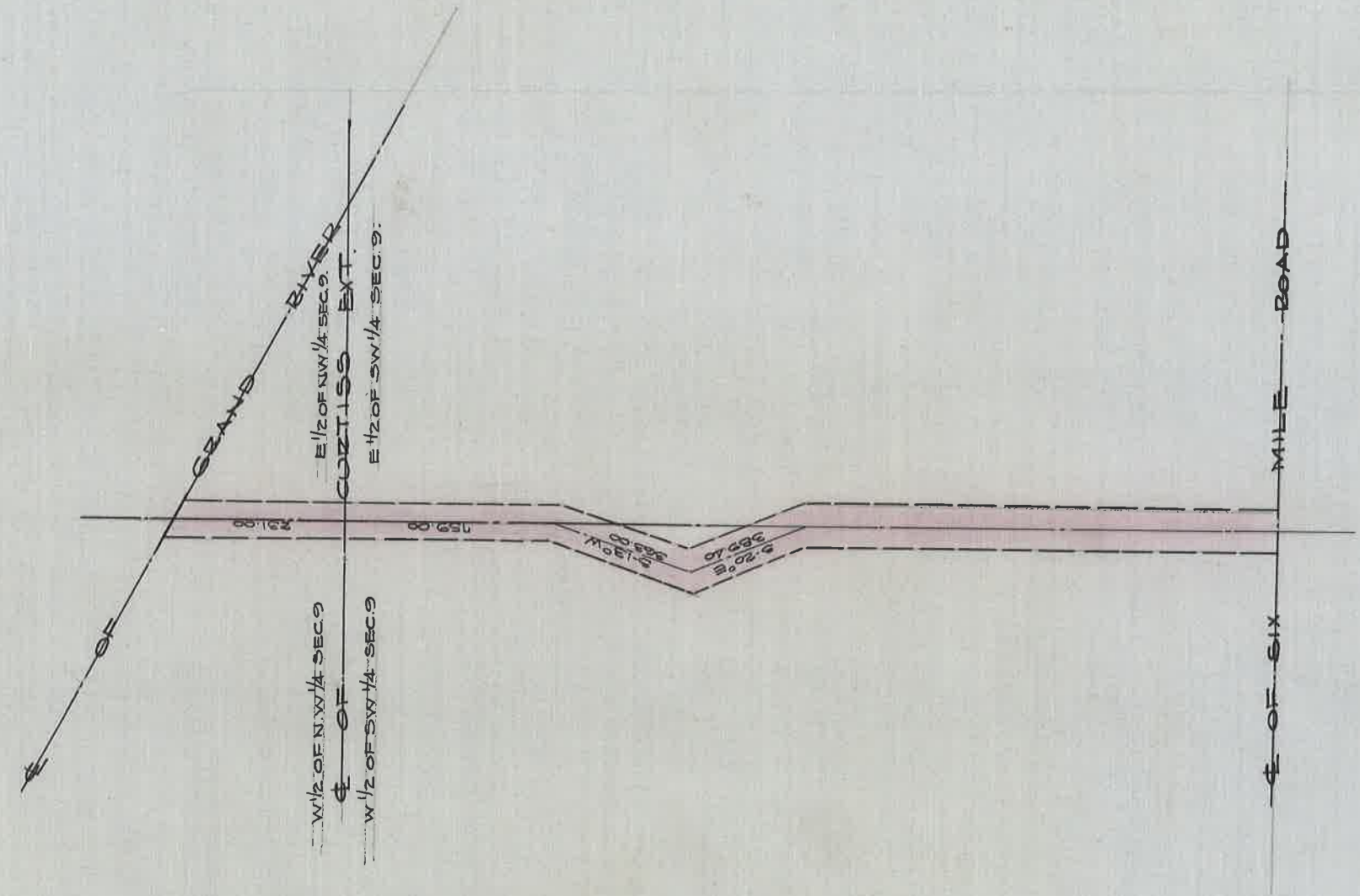


SURVEY OF EXTENSION OF FARMINGTON AVE (NON EXISTENT)

FROM SIX MILE ROAD TO GRAND RIVER
THOS. HARRIS & BOZZIE DUBHAM REDFORD TWP. HWY COMMES.

APRIL 3, 1840



DEPARTMENT OF PUBLIC WORKS
 CITY ENGINEER'S OFFICE
 412 CITY HALL
 SCALE 1" = 60' SCALE
 G.F.C.