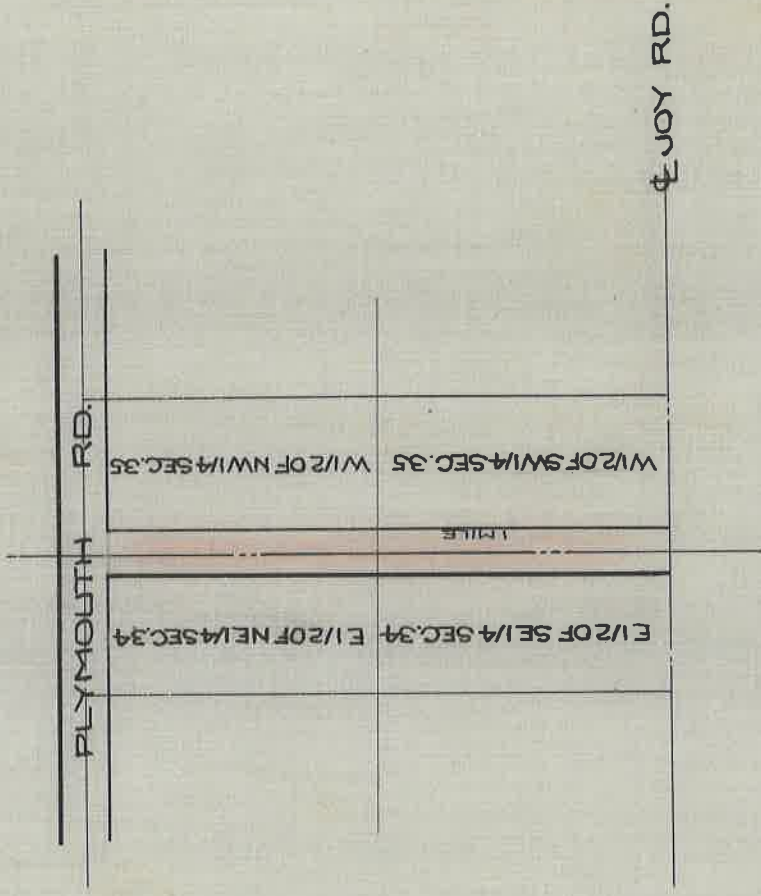


OPENING OF **EVERGREEN AVE.**
 FROM PLYMOUTH AVE TO JOY RD.
 RECORD OF HIGHWAY COMMISSIONER-REDFORD TWR.
 MARCH 2, 1864



DEPARTMENT OF PUBLIC WORKS
 CITY ENGINEER'S OFFICE
 412 CITY HALL
 SCALE 1" = NO SCALE
 4-6-29 A.F.