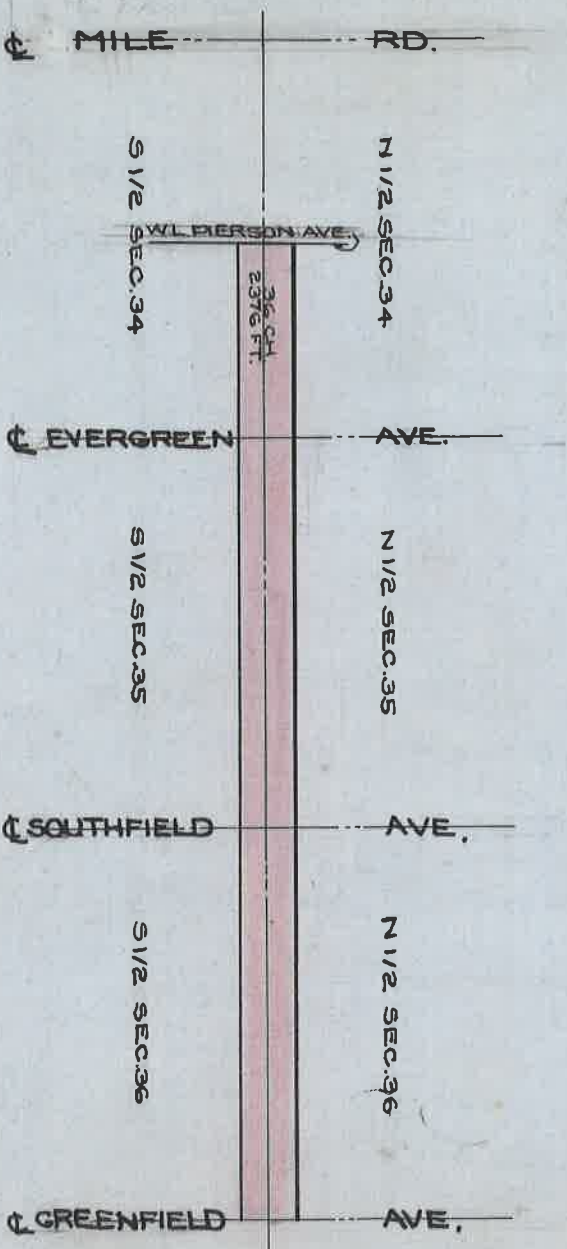


OPENING OF WEST CHICAGO AVE.

FROM GREENFIELD AVE TO 36 CHAINS (2376') W. OF EVERGREEN AVE.

NOAH PECK, H. BETTS - REDFORD HWY. CONTRS

MAY 19, 1936



DEPARTMENT OF PUBLIC WORKS
CITY ENGINEER'S OFFICE
412 CITY HALL

SCALE 1"=No Scale
10-13-30