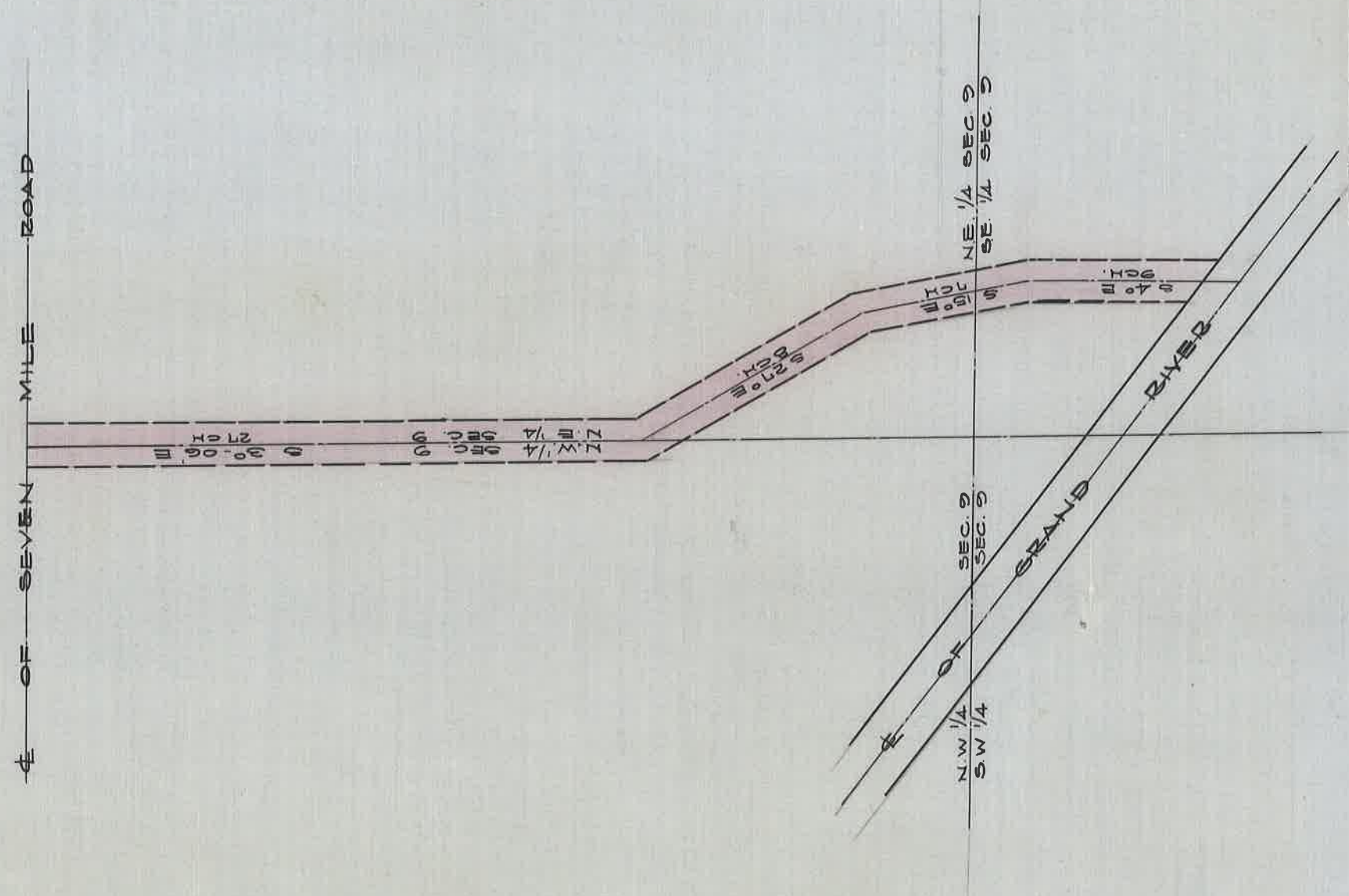


# SURVEY OF BERG ROAD

FROM SEVEN MILE ROAD TO GRAND RIVER  
A. STOCKWELL & N. BETTS REDFORD TWP. HWY COMMRS  
MARCH, 16, 1838.



DEPARTMENT OF PUBLIC WORKS  
 CITY ENGINEER'S OFFICE  
 412 CITY HALL  
 SCALE 1"=NO SCALE  
 G.F.G.

ST. OFG. BK. G - PG. 145.  
 A.R.F.