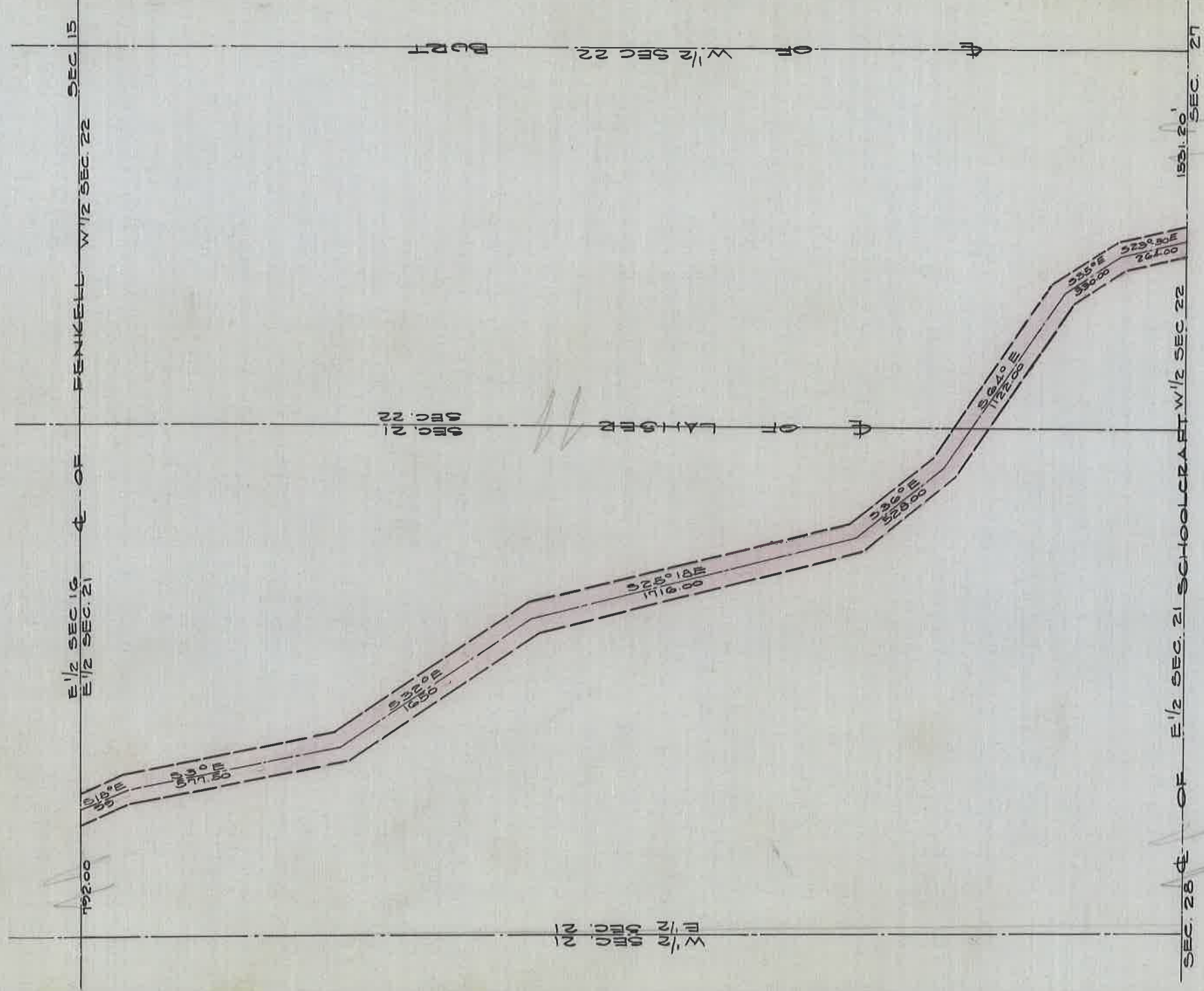


VACATION OF AN ANGLING ST.

FROM SCHOOLCRAFT TO FENKELL AVE
D. JOY, D.M. ARBOUR & JESSE REED BEDFORD TWP. HWY COMMRS.
MARCH 11, 1848



DEPARTMENT OF PUBLIC WORKS
 CITY ENGINEER'S OFFICE
 412 CITY HALL
 SCALE 1"=40' SCALE
 G.F.C.