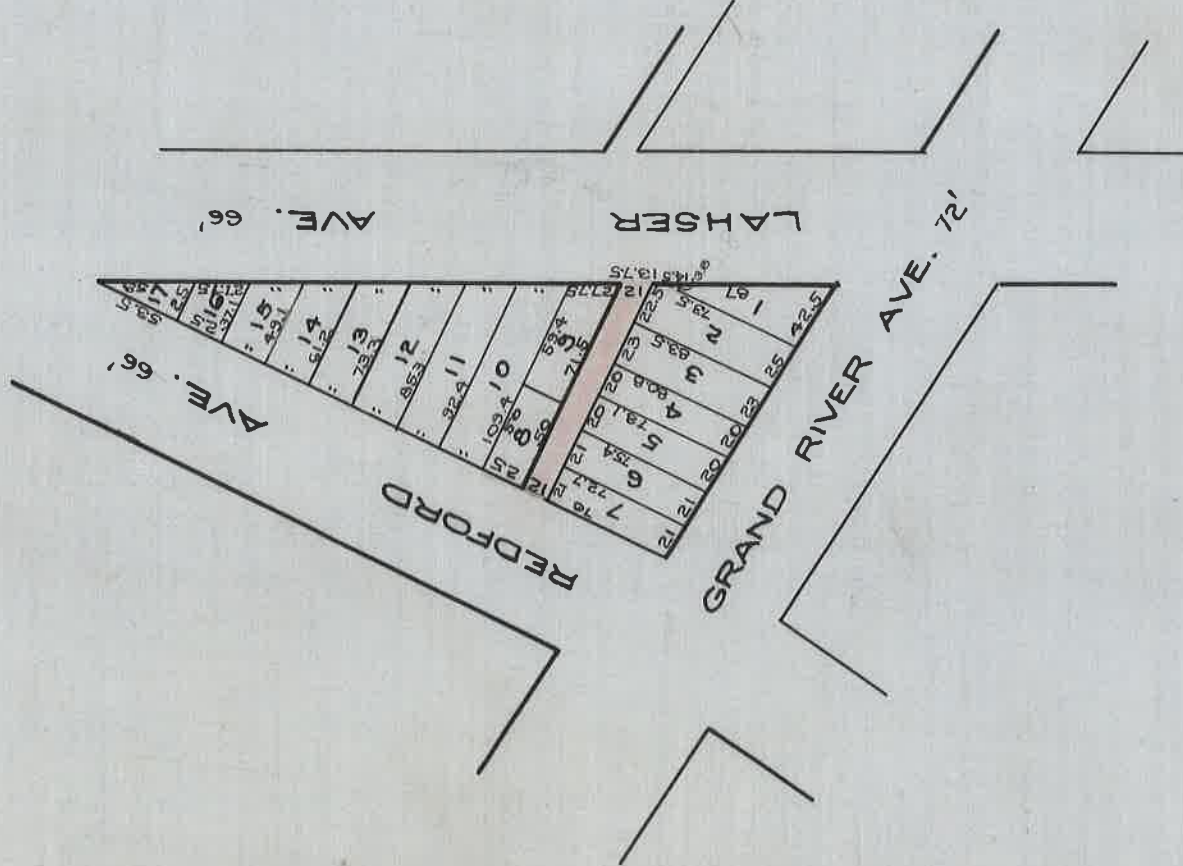


VACATION OF ALLEY

FIRST NORTH OF AND PARALLEL TO G.D. RIVER, BETWEEN LAHSER & REDFORD AVE.
PAGES 8919 REDFORD VILLAGE BOARD PROCEEDINGS 1924-25



DEPARTMENT OF PUBLIC WORKS
CITY ENGINEER'S OFFICE
412 CITY HALL

SCALE 1"=100'
3-11-30

ST. OP6 - BK. 6 - PG. 142.

A.E.F.

A.F.