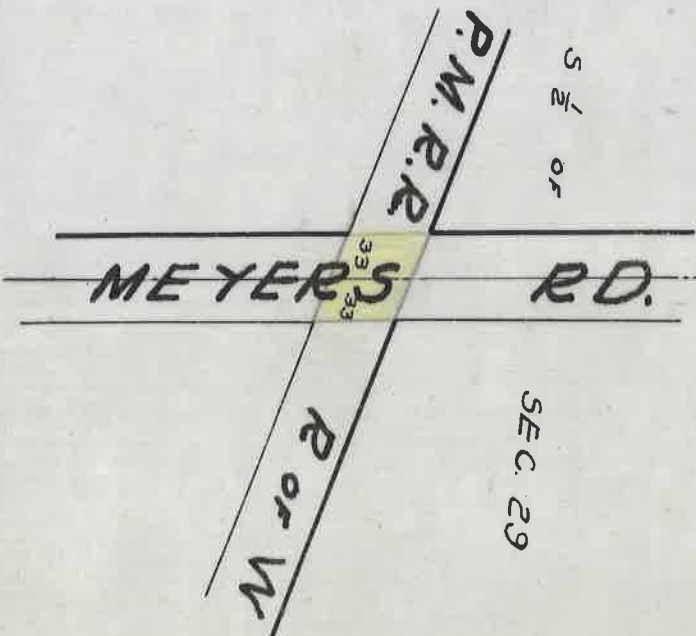
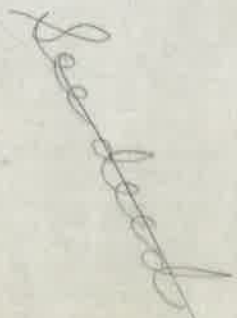


OPENING OF MEYERS RD ACROSS P.M.R.R.

GREENFIELD TWP HWY. REC. 1906-23 P87-9
(SEE DEED ALSO)

MAY 6 1912



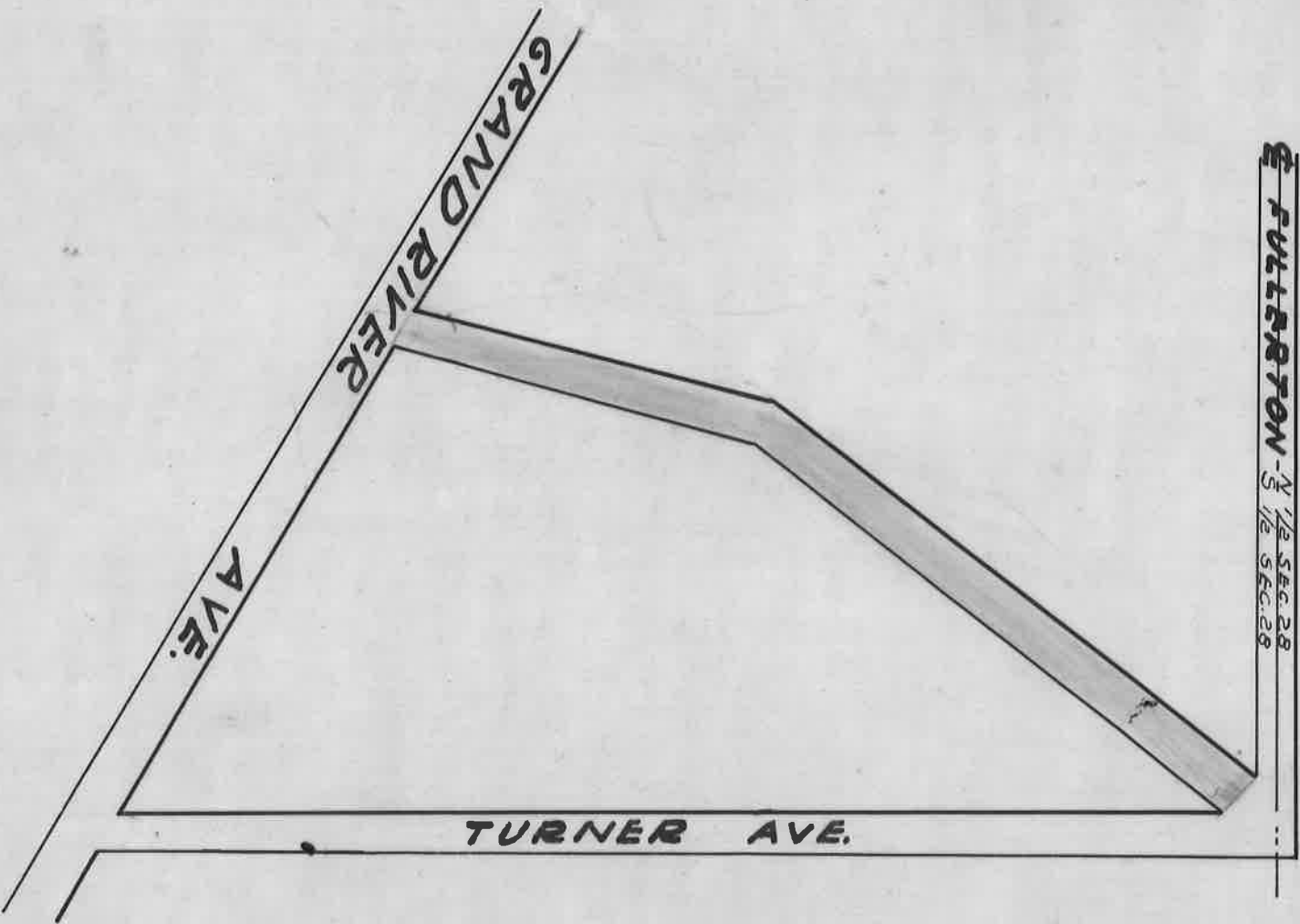
DEPARTMENT OF PUBLIC WORKS
CITY ENGINEER'S OFFICE
497 CITY HALL
SCALE 1" = NONE

(725)

VACATION OF PORTION OF TURNER RD. FROM FULLERTON TO GRAND RIVER

SEE HWY COMMISSIONER'S REPORT UNDER TURNER RD. JUN. 13 1899
Memphis Engineering Co. Rec. 1890-1906 pp. 166-187

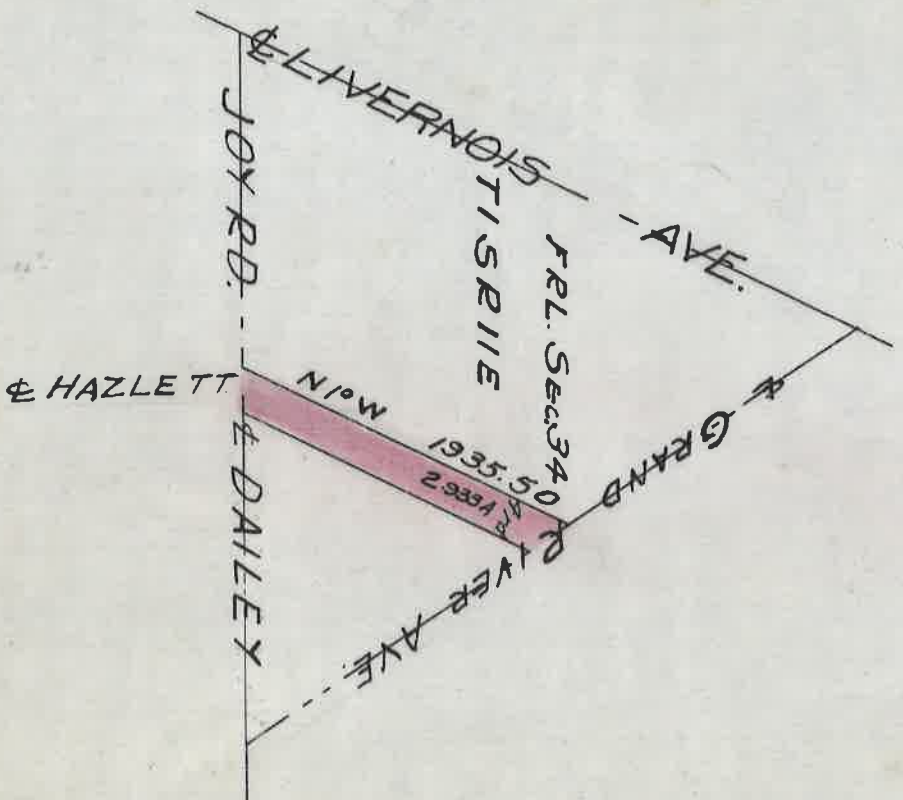
John H. ...
...



DEPARTMENT OF PUBLIC WORKS
CITY ENGINEERS OFFICE
412 CITY HALL


SCALE 1" = NONE

OPENING OF DAILEY AVE.
FROM INTERSECTION OF DAILEY & HAZLETT AVES
TO GRAND RIVER AVE.
GREENFIELD TWP. HWY REC. 1906-23 P-29-49
SEE TWP. BD. REPORT UNDER DAILEY



DEPARTMENT OF PUBLIC WORKS
CITY ENGINEERS OFFICE
412 CITY HALL

SCALE 1" = 100 FEET

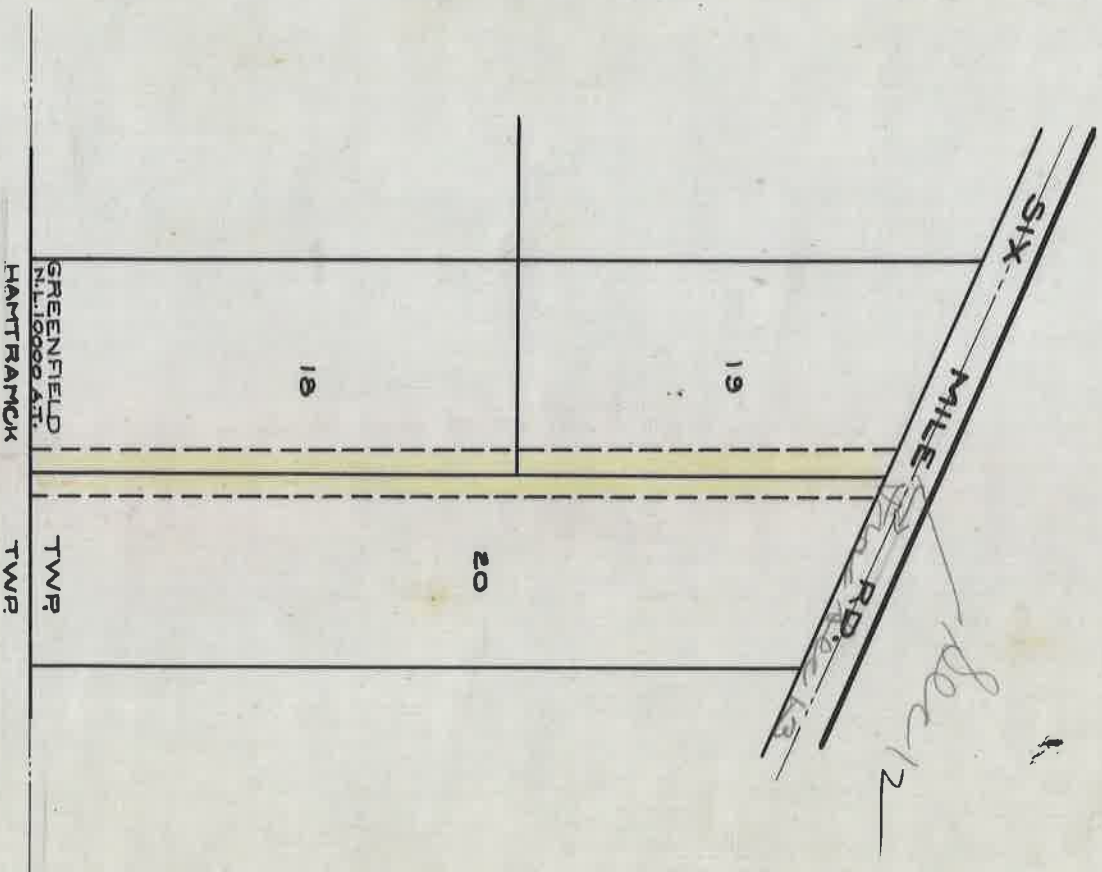


DEDICATION OF OAKLAND AVE.
FROM N/L 10000 A.T. TO SIX MILE ROAD

JUNE 2, 1890

NOTE: SEE OAKLAND AVE. AMONG DEEDS

Pages 10-18 Greenfield Com. of 14th Dec 1890-1900



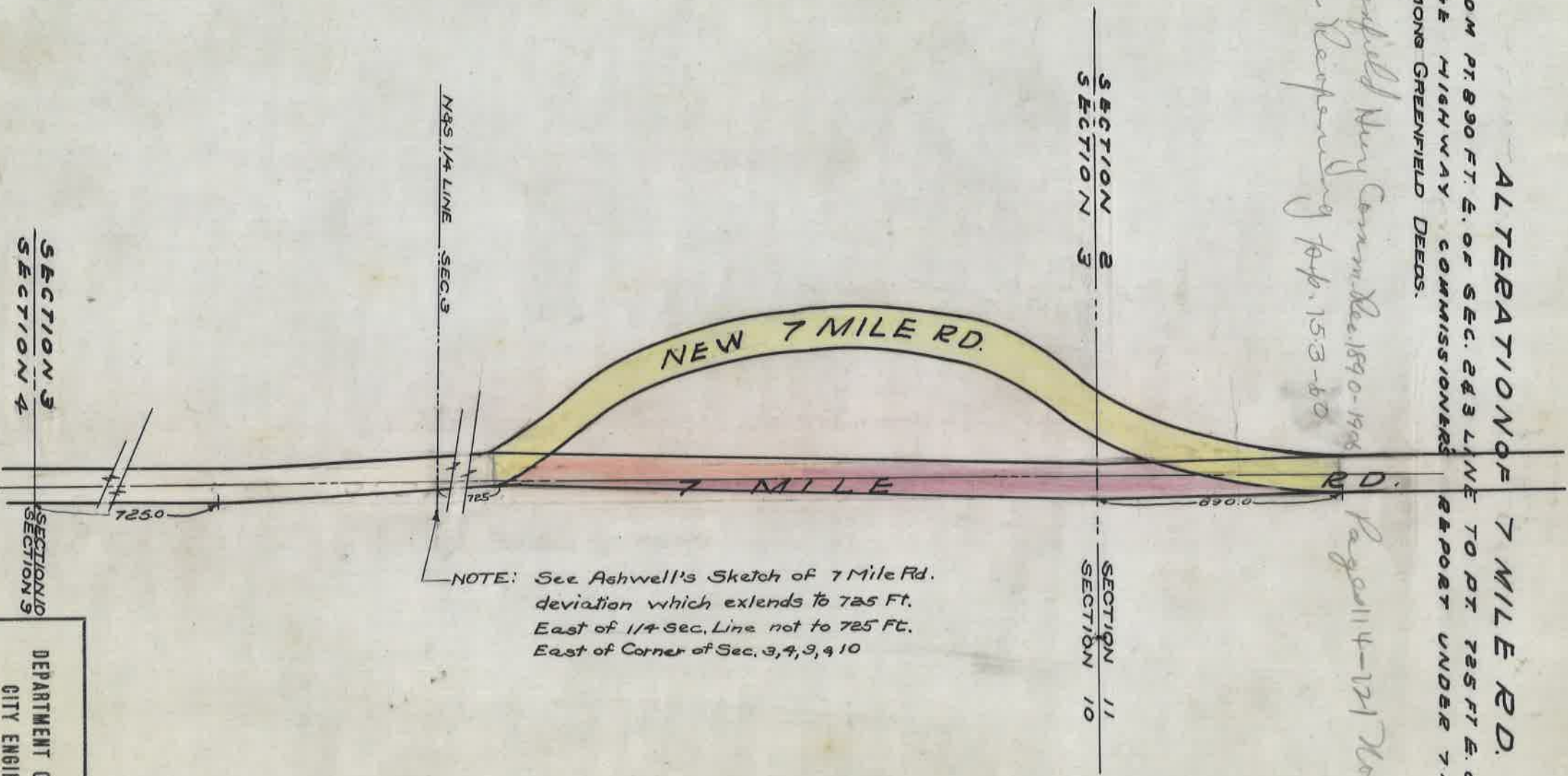
DEPARTMENT OF PUBLIC WORKS
CITY ENGINEERS OFFICE
412 CITY HALL
SCALE 1" = NO SCALE
6-17-29

A.F.

ALTERATION OF 7 MILE RD.
FROM PT. 890 FT. E. OF SEC. 2&3 LINE TO PT. 725 FT. E. OF SEC. 3&4
SEE HIGHWAY COMMISSIONERS
AMONG GREENFIELD DEEDS.

*Greenfield Hwy Comm. Res. 1890-1906
See Responding Pap. 153-60*

Page 114-121 Nov. 10, 1894



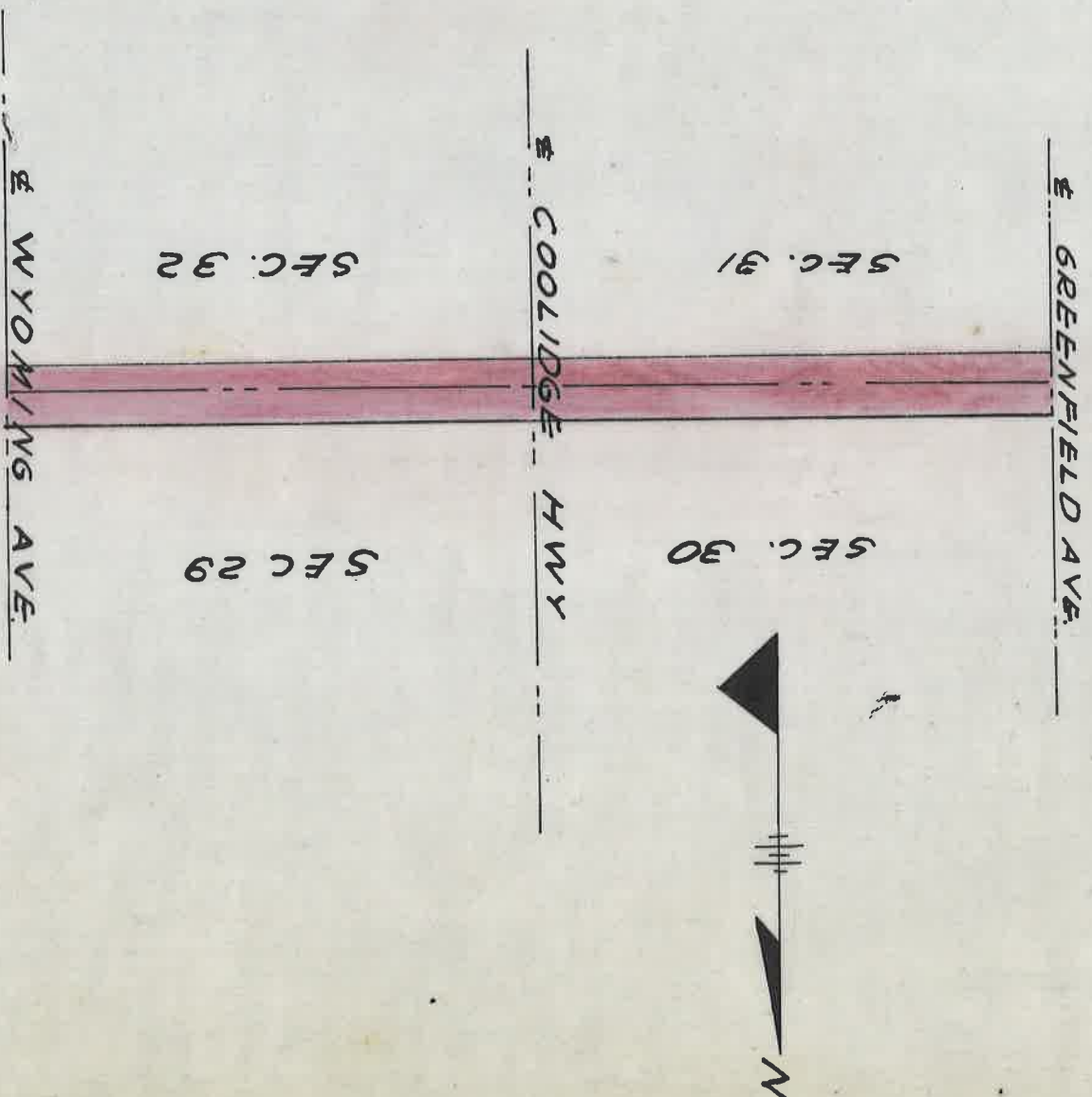
NOTE: See Ashwell's Sketch of 7 Mile Rd.
deviation which extends to 725 Ft.
East of 1/4 Sec. Line not to 725 Ft.
East of Corner of Sec. 3, 4, 9, & 10

SECTION 3
SECTION 4
SECTION 10
SECTION 9

DEPARTMENT OF PUBLIC WORKS
CITY ENGINEERS' OFFICE
412 CITY HALL
SCALE 1" = NONE

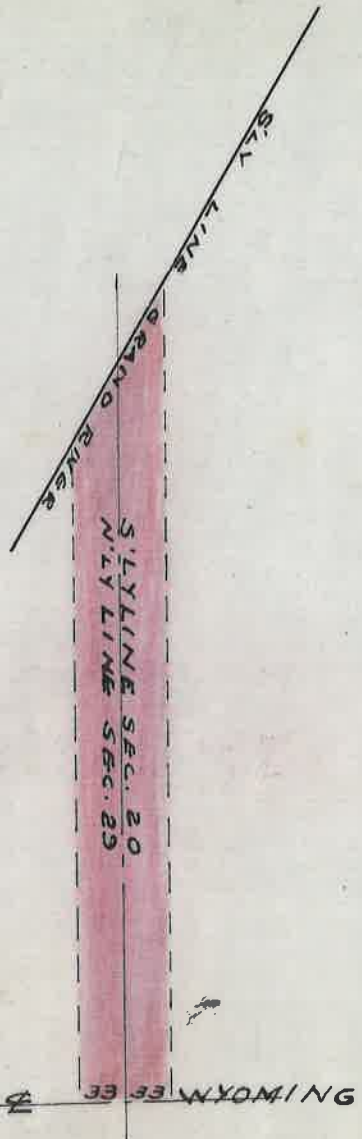


SURVEY OF PLYMOUTH RD
FROM WYOMING TO GREENFIELD
APRIL 3, 1915



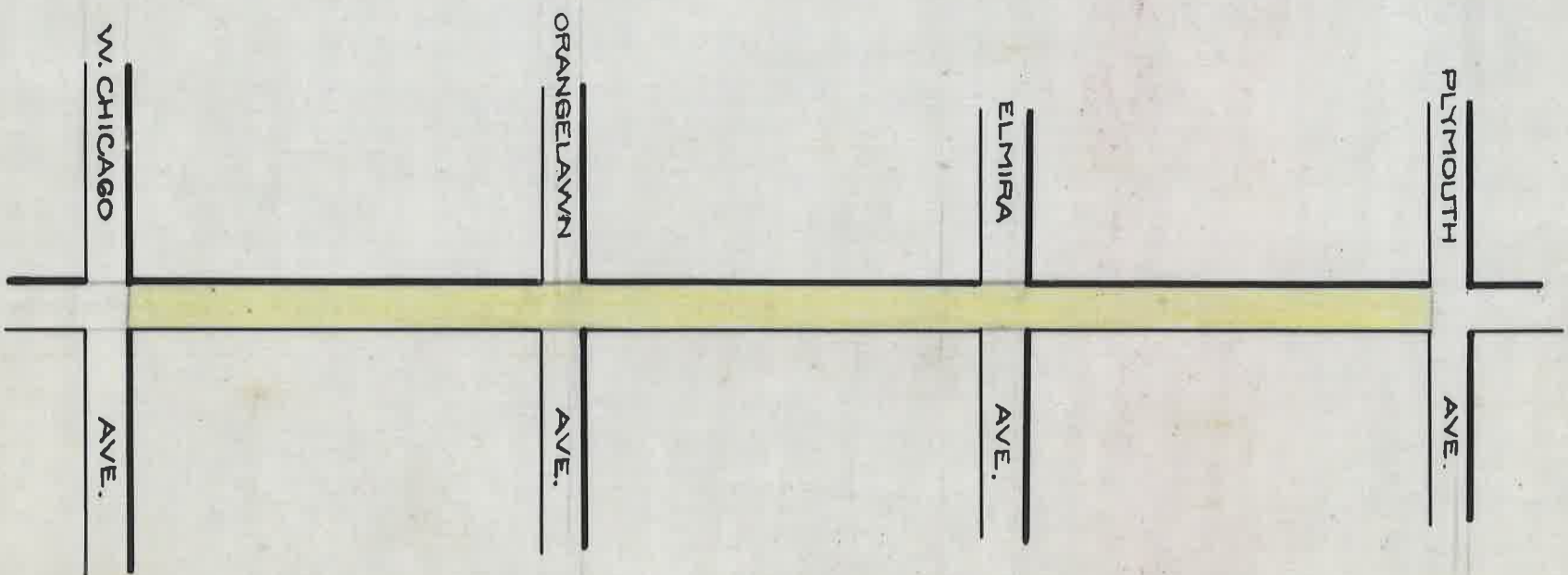
DEPARTMENT OF PUBLIC WORKS
CITY ENGINEER'S OFFICE
412 CITY HALL
SCALE 1" = NONE
5-23-28
1145

OPENING OF SCHOOLCRAFT
FROM GRAND RIVER TO WYOMING
MARCH 11, 1886



DEPARTMENT OF PUBLIC WORKS
 CITY ENGINEERS OFFICE
 412 CITY HALL
 SCALE 1" = NONE
 6-29-29
 (1245)

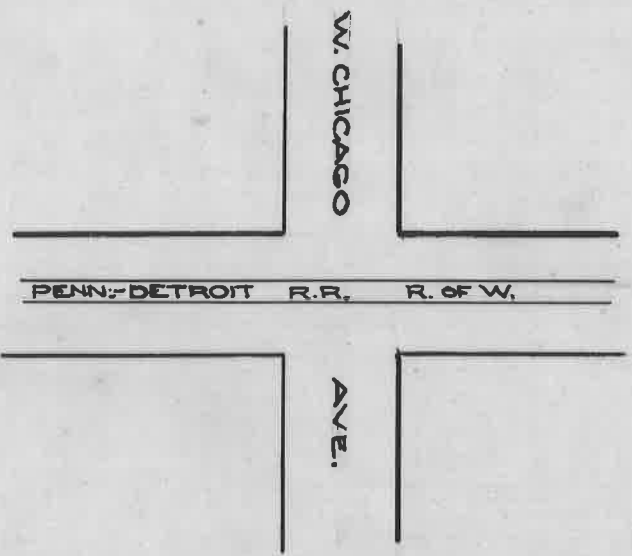
DEDICATION OF HUBBELL AVE.
FROM WEST CHICAGO AVE. TO PLYMOUTH AVE.
GREENFIELD TWP BOARD RECORD 1915-24 P.433 SEPT.16,1922



DEPARTMENT OF PUBLIC WORKS
CITY ENGINEERS OFFICE
412 CITY HALL
SCALE 1" = No Scale
7-22-29
A.F.

PENNSYLVANIA - DETROIT R.R. RIGHT OF WAY
ACROSS WEST CHICAGO AVE.
MICHIGAN RAILROAD COMMISSION MAY 9, 1917

NOTE: SEE GREENFIELD DEEDS



DEPARTMENT OF PUBLIC WORKS
CITY ENGINEERS OFFICE
412 CITY HALL
SCALE 1"=No Scale
7-24-29
A.F.