

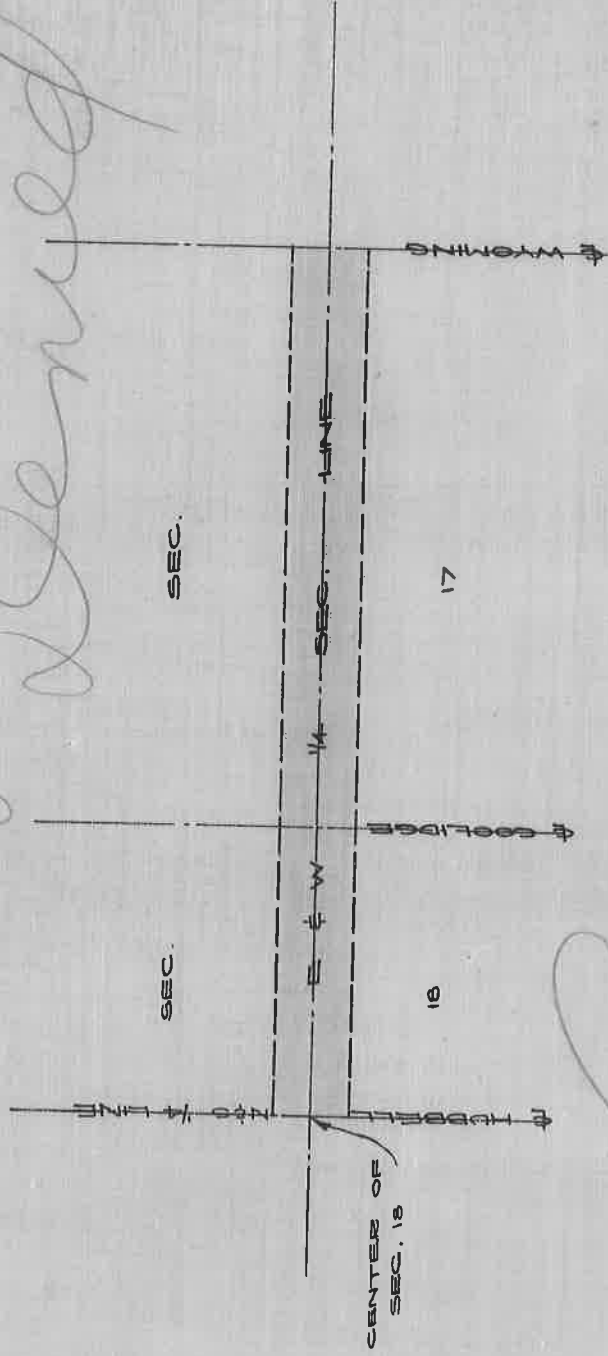
PURITAN AVE.

HUBBALL TO WYOMING

DATED JAN. 2, 1905

*Hubbald Exp Hwy Rec. 1899 1706 pp. 207  
See Puritan map Greenfield Reeds*

*Demuel*



*Samuel*

DEPARTMENT OF PUBLIC WORKS  
CITY ENGINEER'S OFFICE  
412 CITY HALL

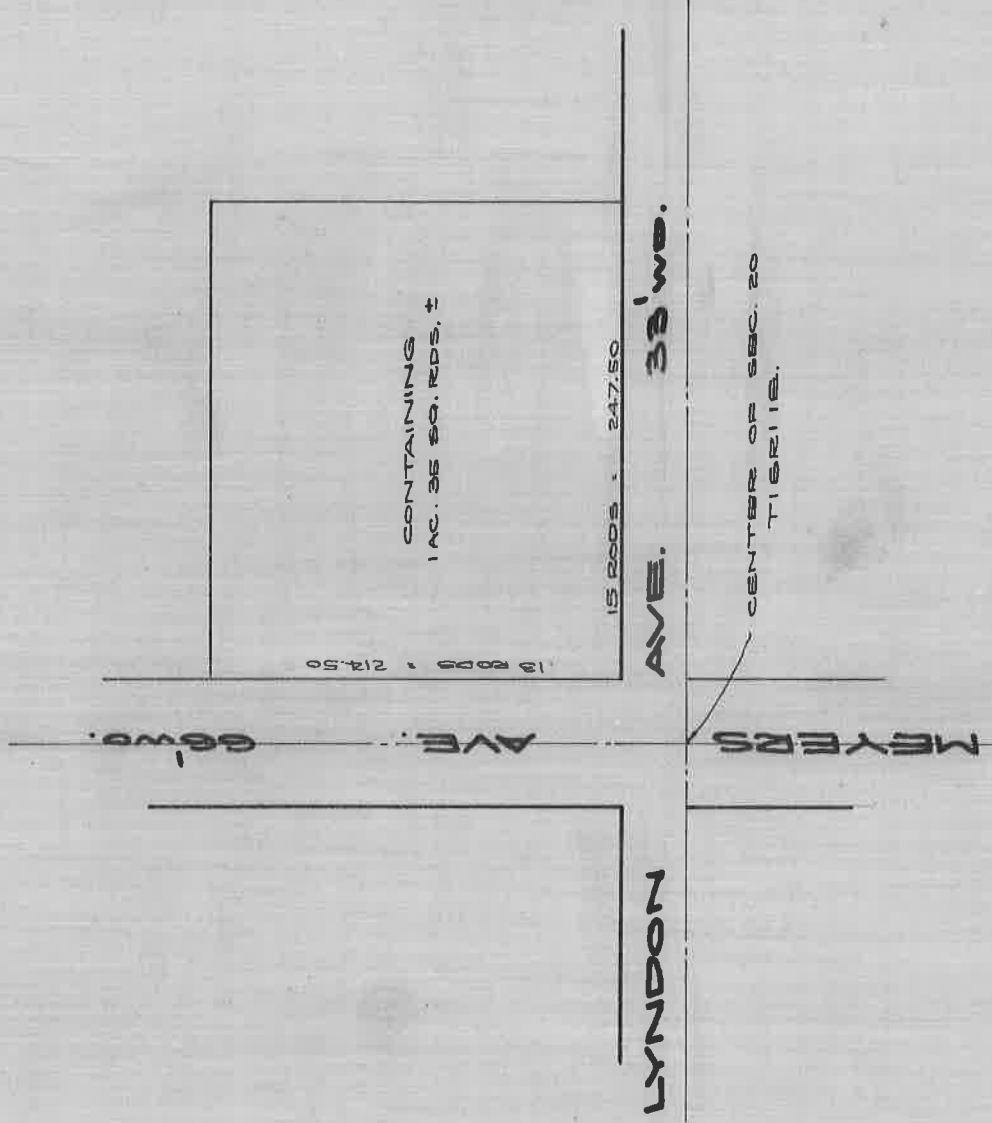
SCALE 1" = NO SCALE 5-15-28

JEA

# ADD'L LAND FOR CEMETERY

TAKEN BY ORDER OF COURT FROM

JOHN F. C. MEYER DEC. 6, 1895.



DEPARTMENT OF PUBLIC WORKS  
 CITY ENGINEER'S OFFICE  
 412 CITY HALL  
 SCALE 1" = 100' APR. 24, '28.  
 J. E. A.

HUBBELL AVE. OPENING  
(FORMERLY CHURCH ROAD)

TAKEN AUG. 1905 BY GREENFIELD TWP.

SEE HUBBELL AMONG GREENFIELD DEEDS

*Pages 215, 219-226 Green Twp. Hwy Comm. Rec. 1890-1906*

EIGHT MILE ROAD 66' WD.

35 195

SEC.

6

SEC.

7

SIX MILE ROAD 66' WD.

35 195

DEPARTMENT OF PUBLIC WORKS  
CITY ENGINEER'S OFFICE  
412 CITY HALL

SCALE 1" = 60' SCALE 4-24-08

*J. G. A.*

# ROAD NO 7-D.

(DAVISON AVE. CONTINUED)

DATED AUG. 25, 1844.

PAGE 25

DAVISON - SEE ROAD 7-C.

10000 AC. TRACT

930 ft N 36° E

WLY LINE

N 29° E

1/4 POST FRAC. SEC. 28.

2950 ft.

5. 1/4 POST FRAC. SEC. 28

SLY LINE FRAC. SEC. 28.

NLY LINE SEC. 28.

NLY LINE GRAND RIVER

714 ch.

110 ch

N

W

3300 ft

N 71° E

10000 AC. TRACT

NOTE: The above road No 7-D originally continued thru 1/4 sec. 10, 9 + 8 to the west line of 7 which portion of the road was discontinued Mar. 28, 1853.

DEPARTMENT OF PUBLIC WORKS  
CITY ENGINEER'S OFFICE  
412 CITY HALL

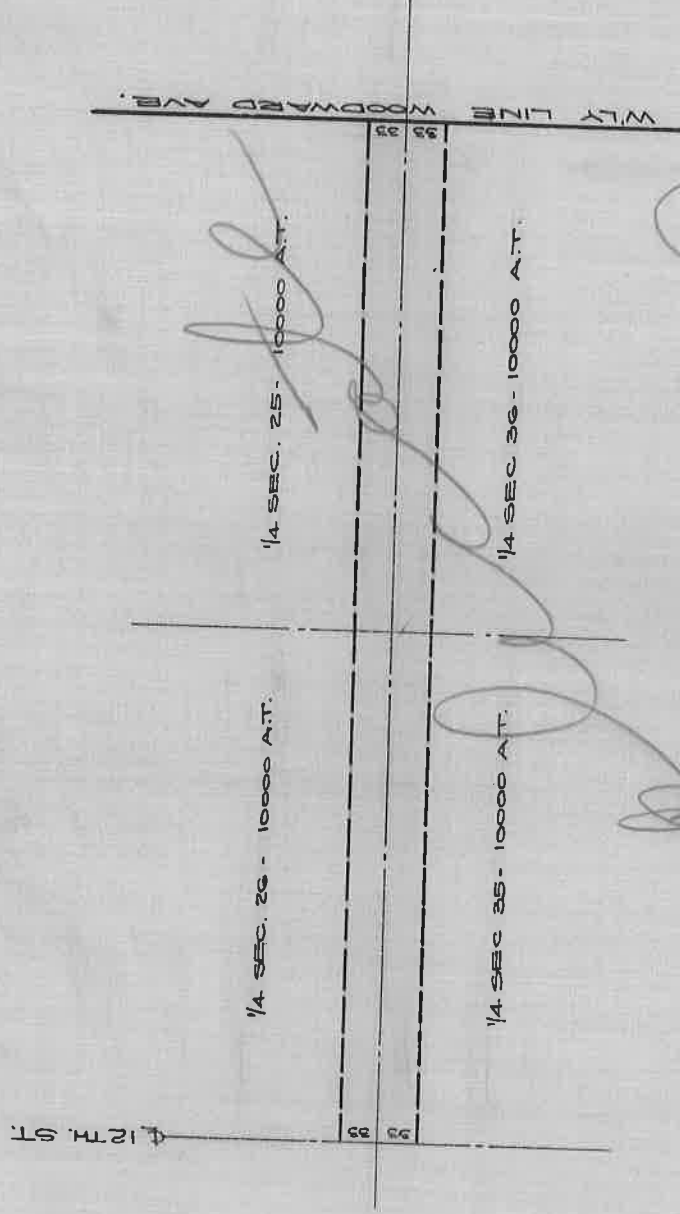
SCALE 1" = 10 chains (approx.)

J.E.A.

CANIFF ROAD  
NOW AN ALLEY NORTH OF CALVERT

OPENED BY GREENFIELD TWP. SEPT. 3, 1875.

PAGE 114



DEPARTMENT OF PUBLIC WORKS  
CITY ENGINEER'S OFFICE  
412 CITY HALL

SCALE 1"=60 SCALE 4"-25'-28

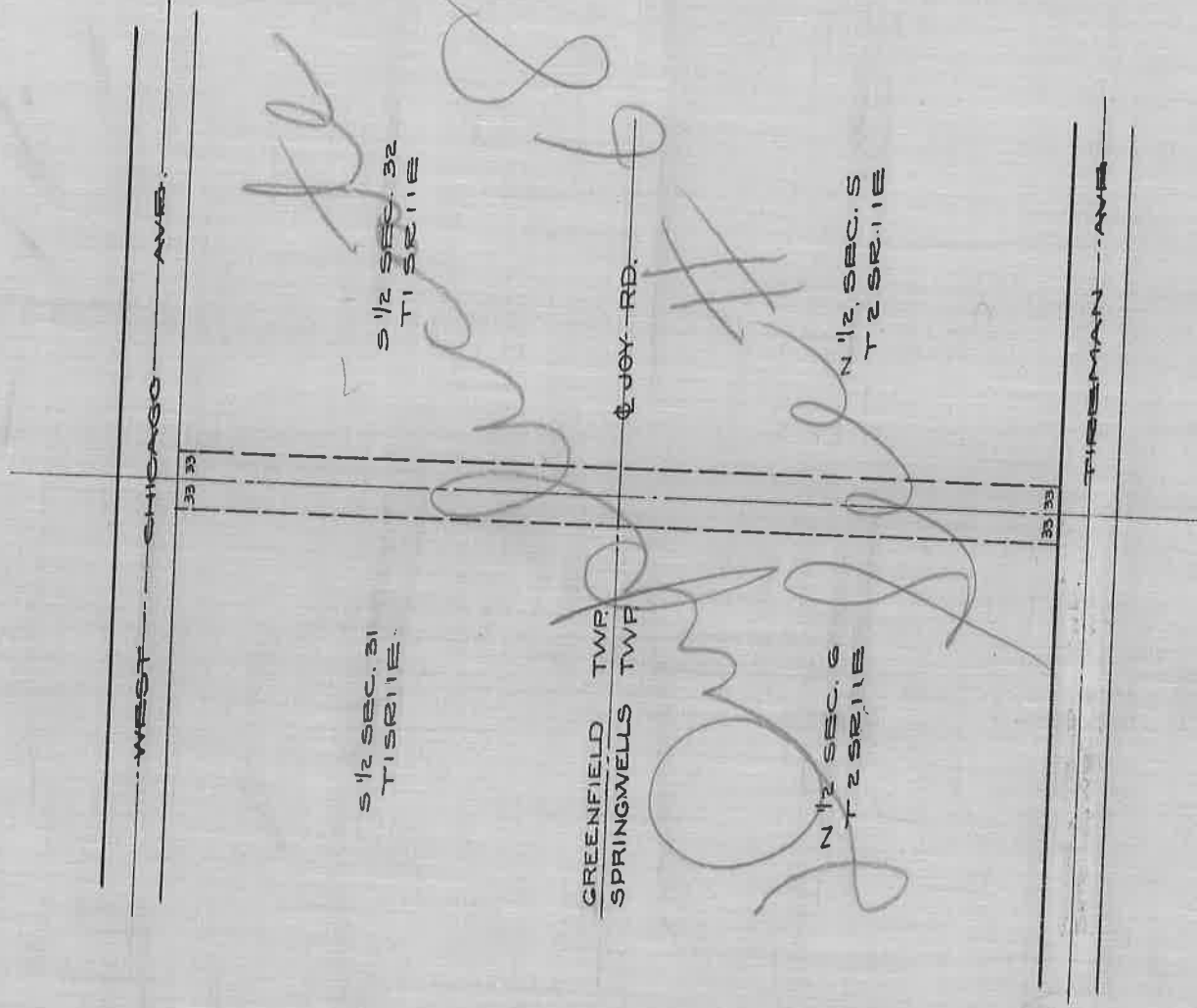
13.9

Fig 114

COOLIDGE HIGHWAY OPENING

(FORMERLY MONNIER RD)

PETITION DATED NOV. 28, 1874.  
PETITION DENIED DEC. 30, 1874  
OPENED MARCH 13, 1876



DEPARTMENT OF PUBLIC WORKS  
CITY ENGINEER'S OFFICE  
412 CITY HALL

SCALE 1"=60 SCALE 4-25-20

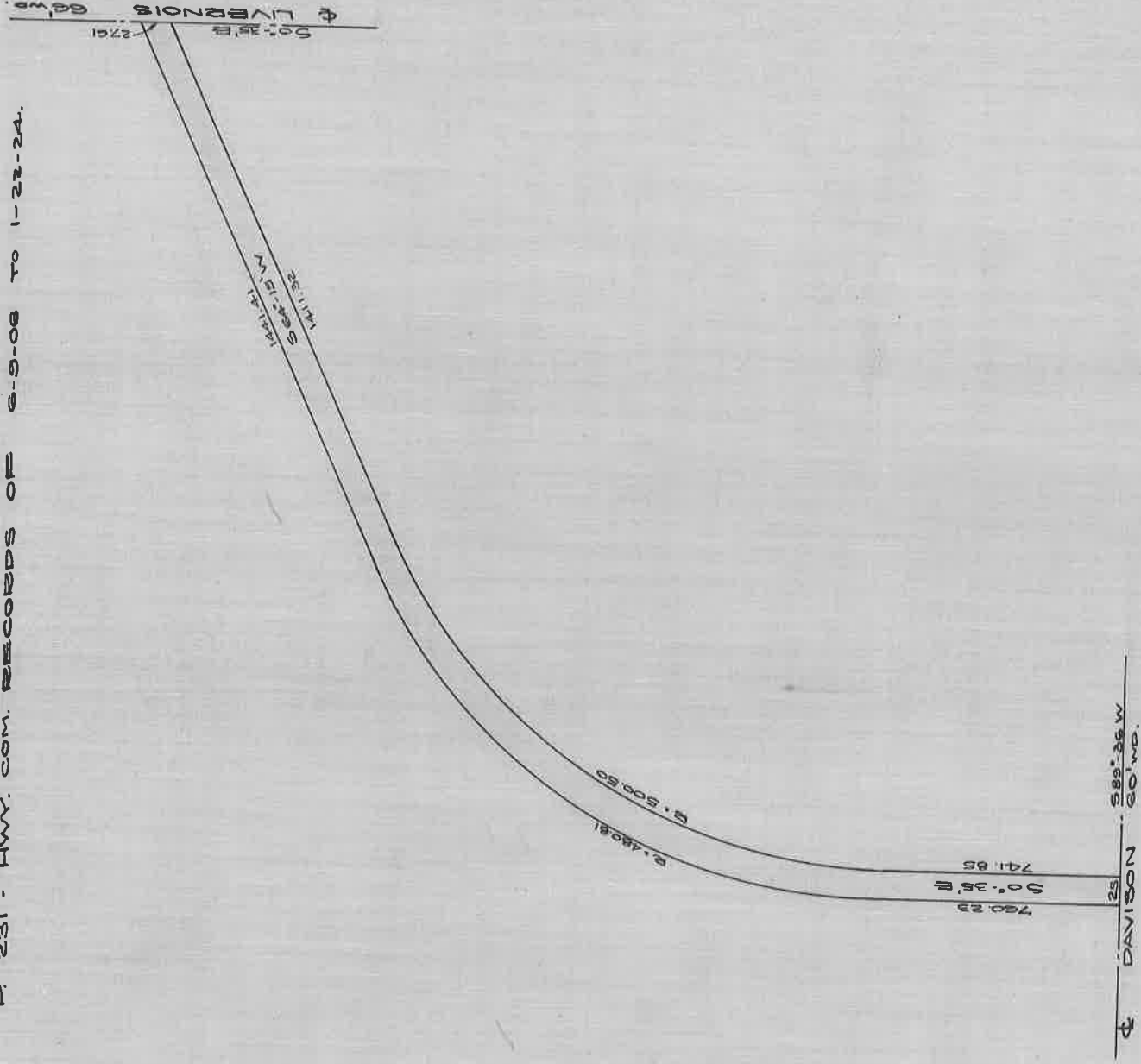
J. E. A.

# EWALD CIRCLE EASEMENT

FORMERLY AMERICAN & LABELLE AVE.

AS SHOWN IN OAKMAN'S TURNER & FORD HWY. SUBN.

P. 231 - HWY. COM. RECORDS OF 6-9-06 TO 1-22-24.



DEPARTMENT OF PUBLIC WORKS  
CITY ENGINEER'S OFFICE

412 CITY HALL

SCALE 1" = 150'

3-28-28

J.E.A.

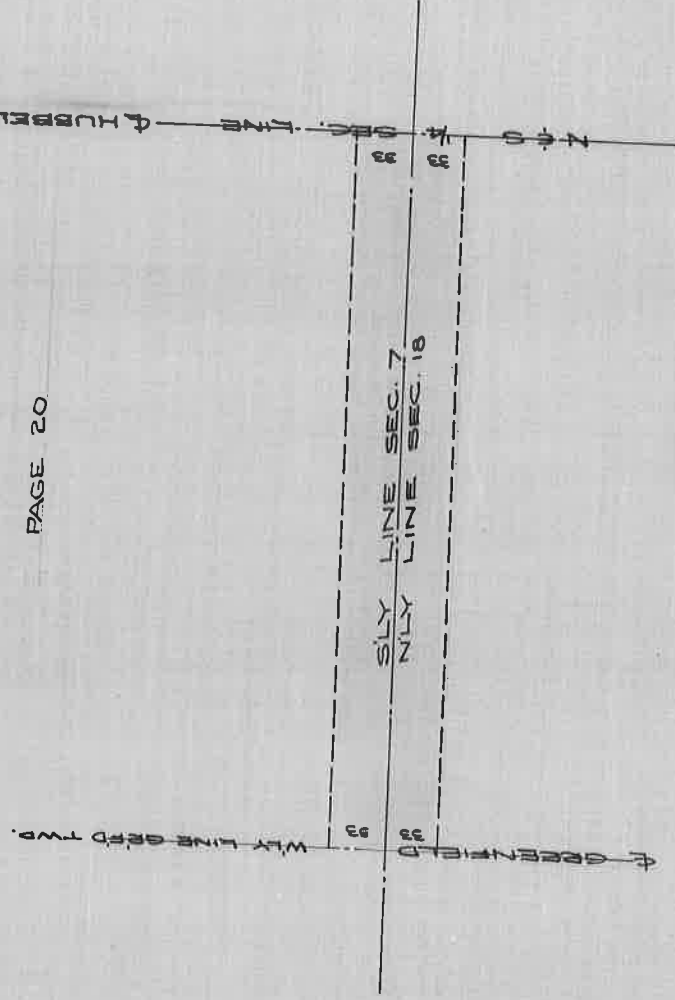
12

ROAD NO 4-E.

(SIX MILE ROAD)

DATED NOV. 8, 1847.

PAGE 20



DEPARTMENT OF PUBLIC WORKS  
CITY ENGINEER'S OFFICE  
412 CITY HALL  
SCALE 1" = 40' SCALE

J.E.A.

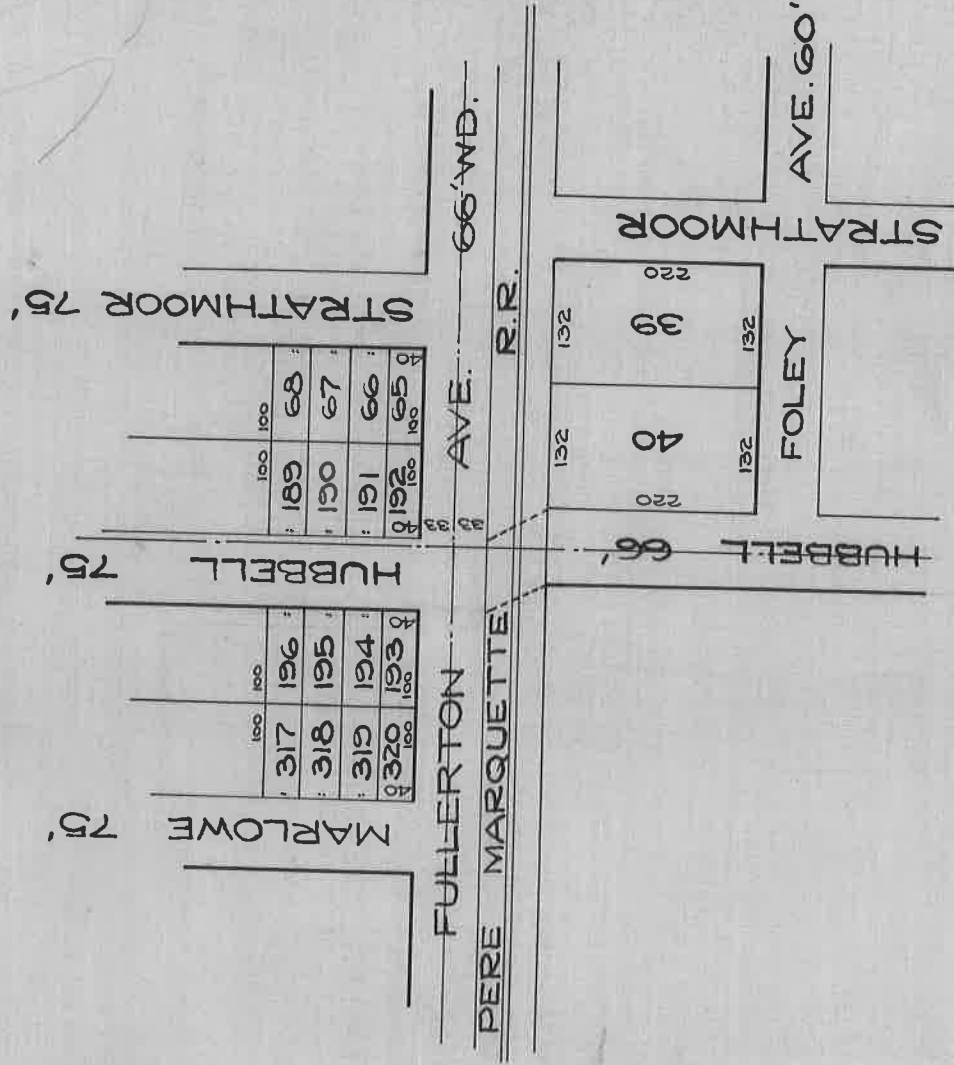
186



PERMISSION GRANTED TO OPEN  
**HUBBELL (CHURCH ST.) AVE.** ACROSS  
 P.M.R.R. R.OF W., BY THE MICH. PUBLIC  
 UTILITIES COMM. AT SESSION HELD ON  
**OCT. 12, 1922**

FILE # 8030-200 PAID \$490 FOR OPENING

NOTE: SEE GREENFIELD TWR BOARD PROC. 1915-24 PAGES 433, 473, 499

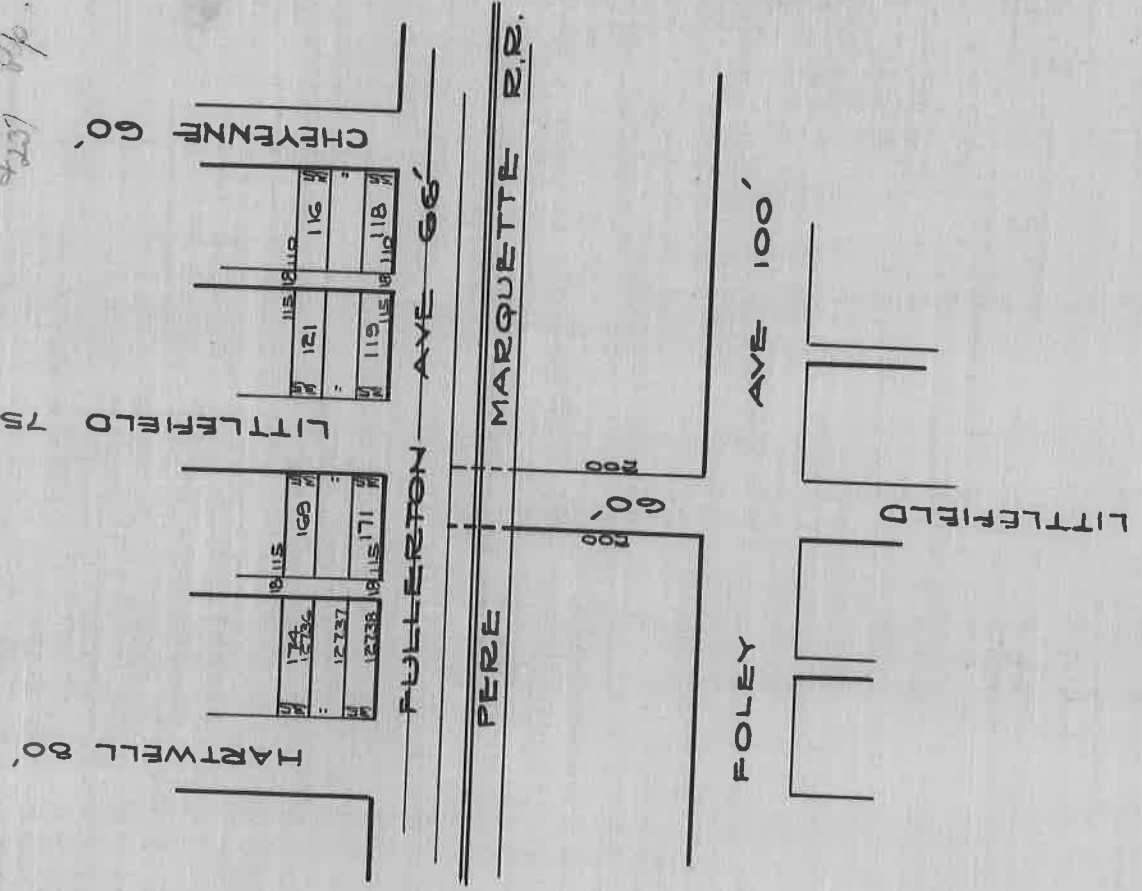


DEPARTMENT OF PUBLIC WORKS  
 CITY ENGINEER'S OFFICE  
 412 CITY HALL  
 SCALE 1" = 200' SEPT. 18, 1928  
 W.J.D.

PERMISSION GRANTED TO OPEN  
 LITTLEFIELD (WINFIELD) AVE ACROSS  
 P.M. R.R. R.O.F.W., BY THE MICH. PUBLIC  
 UTILITIES COMM. AT SESSION HELD ON

DEC. 1, 1920.

*BY* THOS. W. WARD ON DEC. 6, 1920 *of order of P.M. R.R. R.O.F.W.*  
 GREENFIELD TWP. BOARD PROC. 1915-24 PAGE 296 *trans. Report.*  
*207 Sp. 344-347*



DEPARTMENT OF PUBLIC WORKS  
 CITY ENGINEER'S OFFICE  
 412 CITY HALL  
 SCALE 1"=200' SEPT 20, 1928  
 A.R.F.