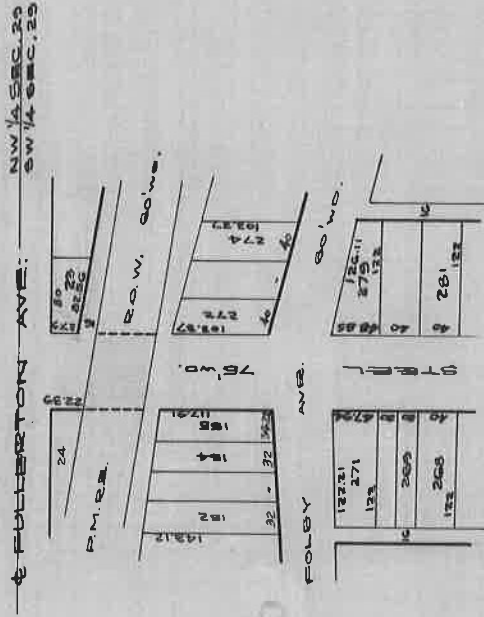


STEEL (BIRMINGHAM BLVD.) AVE. CROSSING

OF P.M.R.R. ACCORDING TO AGREEMENT OF MAR. 8, 1918

MADE BETWEEN GREENFIELD TWP. & P.M. R.R.

PP. 215-219 HWY. COM. RECORDS OF 6-9-06 TO 1-22-24.



ST. O'P'S BK.G - PG. 142.
A.R.F.

DEPARTMENT OF PUBLIC WORKS
CITY ENGINEER'S OFFICE

401 CITY HALL
SCALE 1" = 200'

37

2-16-28

J.E.A.