

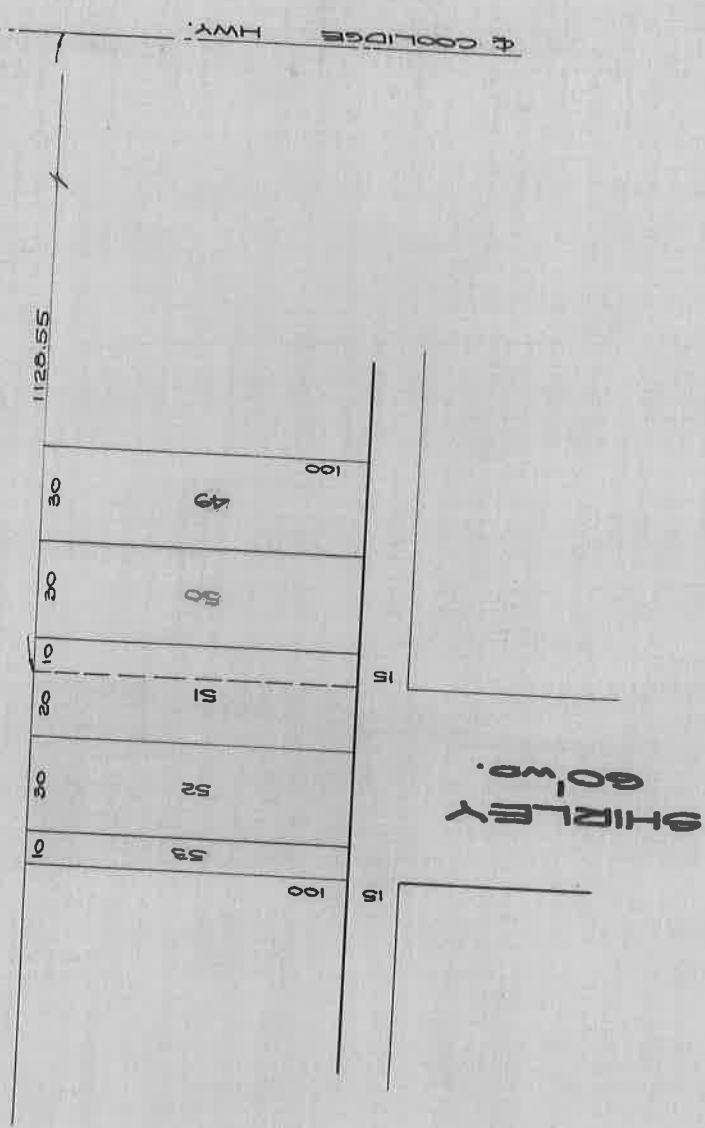
SHIRLEY AVE.

BEING LOT 52 & PARTS OF LOTS 51 & 53 OF HUNT & LEGGETTS SUBN.

DEEDED OCT. 27, 1917 TO GREENFIELD TOWNSHIP

PP. 224-25 OF HWY. COM. RECORDS OF 6-9-06 TO 1-22-24.

TYLER AVE. 50' wd.



DEPARTMENT OF PUBLIC WORKS
CITY ENGINEER'S OFFICE

401 CITY HALL

SCALE 1" = 60'

37

JEA