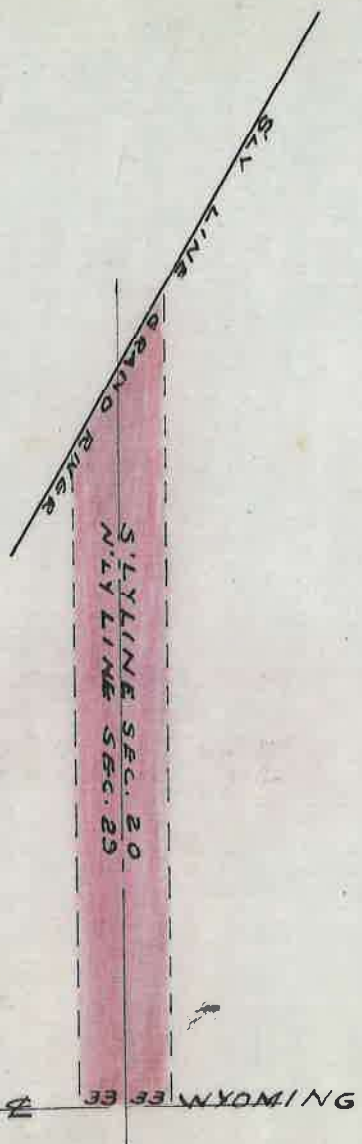


OPENING OF SCHOOLCRAFT  
FROM GRAND RIVER TO WYOMING  
MARCH 11, 1886



DEPARTMENT OF PUBLIC WORKS  
 CITY ENGINEERS OFFICE  
 412 CITY HALL  
 SCALE 1" = NONE  
 6-29-29  
 (225)