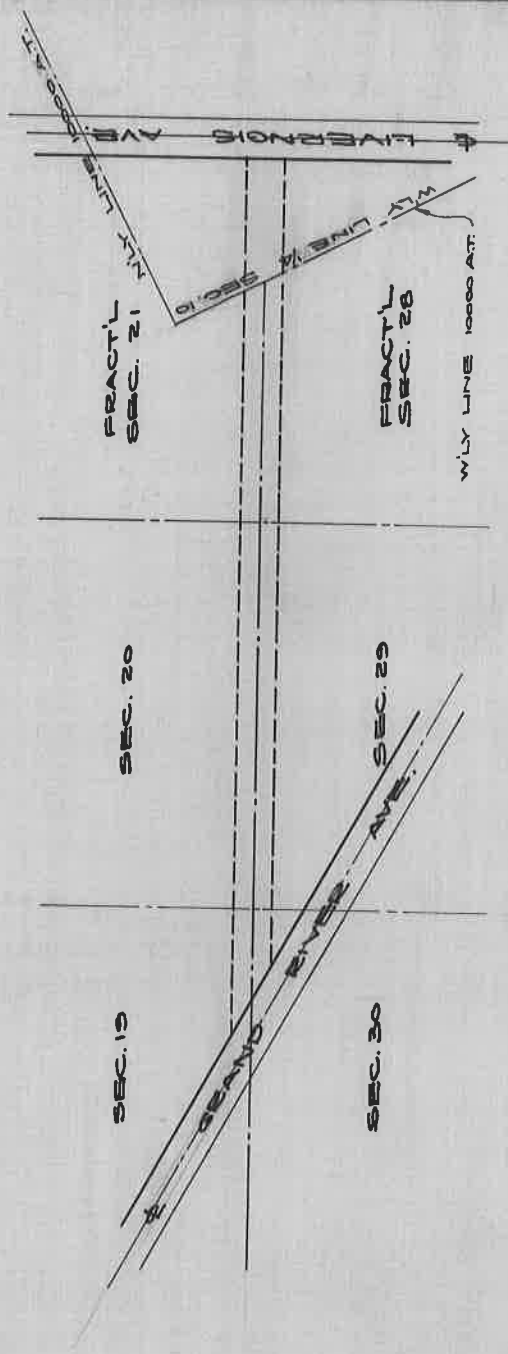


SCHOOLCRAFT AVE.

CONDEMNED MARCH 19, 1908 BY GREENFIELD TWP.

P.P. 14-19 HWY. COM. RECORDS OF 6-9-06 TO 122-24.



DEPARTMENT OF PUBLIC WORKS
CITY ENGINEER'S OFFICE
401 CITY HALL

SCALE 1" = 2640' 3-2-28

36

31

J.E.A.