

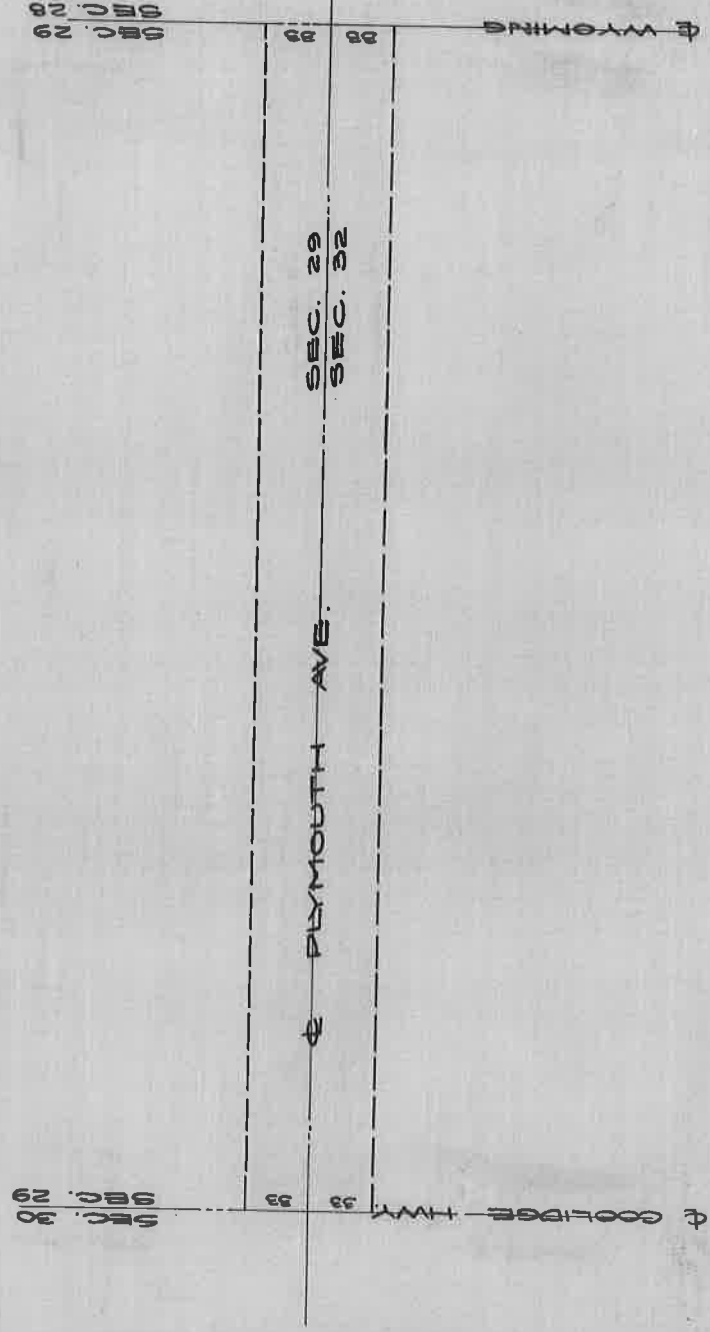
PLYMOUTH AVE. DEDICATION

BEING THE S 33' OF SEC. 29 & THE N 33' OF SEC. 32.

DEDICATED DEC. 20, 1911 TO GREENFIELD TOWNSHIP.

PG. 80 - HWY. COM. RECORDS OF 6-9-06 TO 1-22-24.

NOTE: SEE PLYMOUTH AMONG GREENFIELD DEEDS



DEPARTMENT OF PUBLIC WORKS
CITY ENGINEER'S OFFICE
401 CITY HALL

SCALE 1" = 100' 1-7-28.