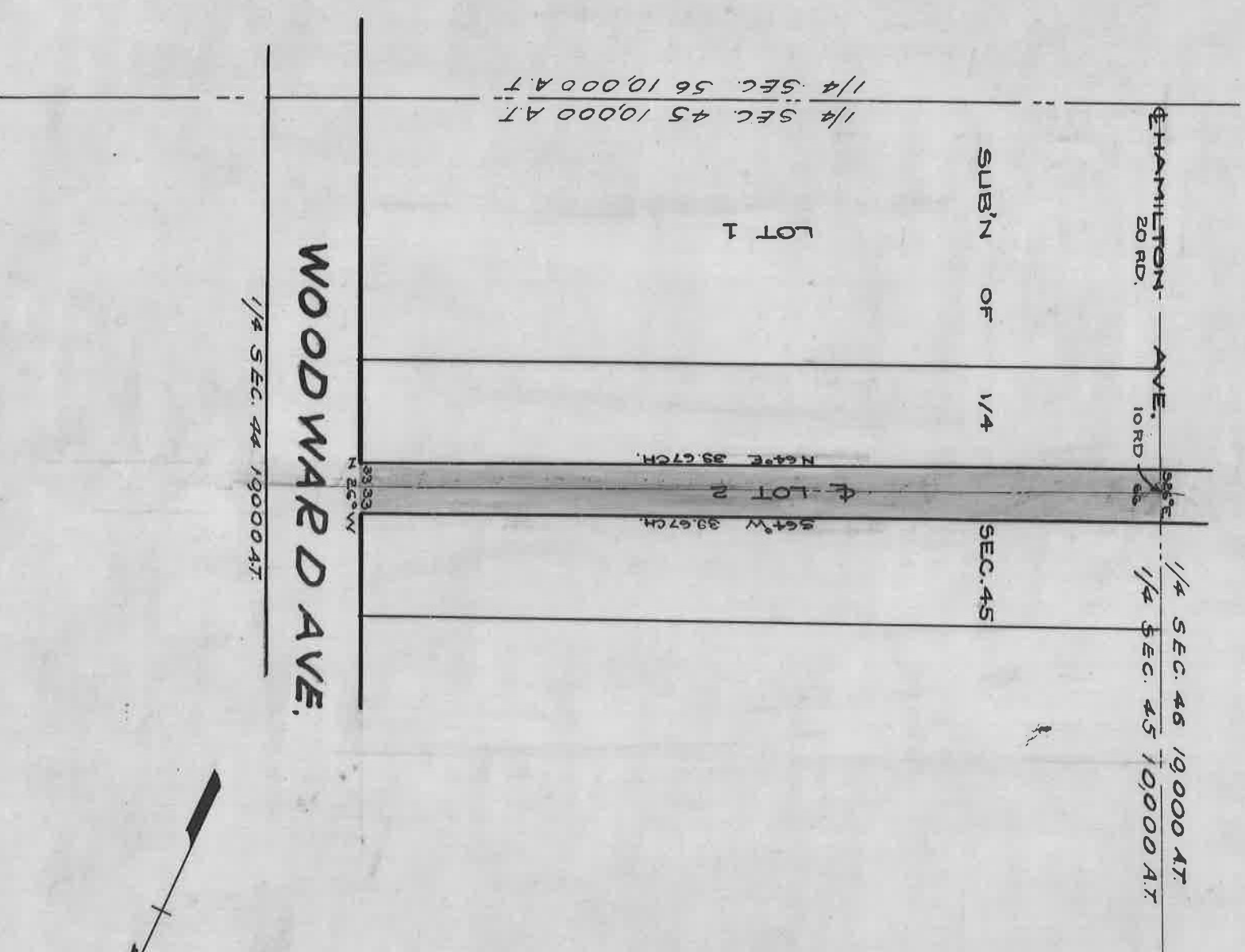


OPENING OF ROAD 30 RDS. N. OF SEC. 45 & 46 LINE
NOW PHILADELPHIA AVENUE.
SEE HIGHWAY COMMISSIONERS REPORT
UNDER PHILADELPHIA AVE.
SEPT. 29, 1897



DEPARTMENT OF PUBLIC WORKS
CITY ENGINEERS OFFICE
412 CITY HALL
SCALE 1" = NONE

