

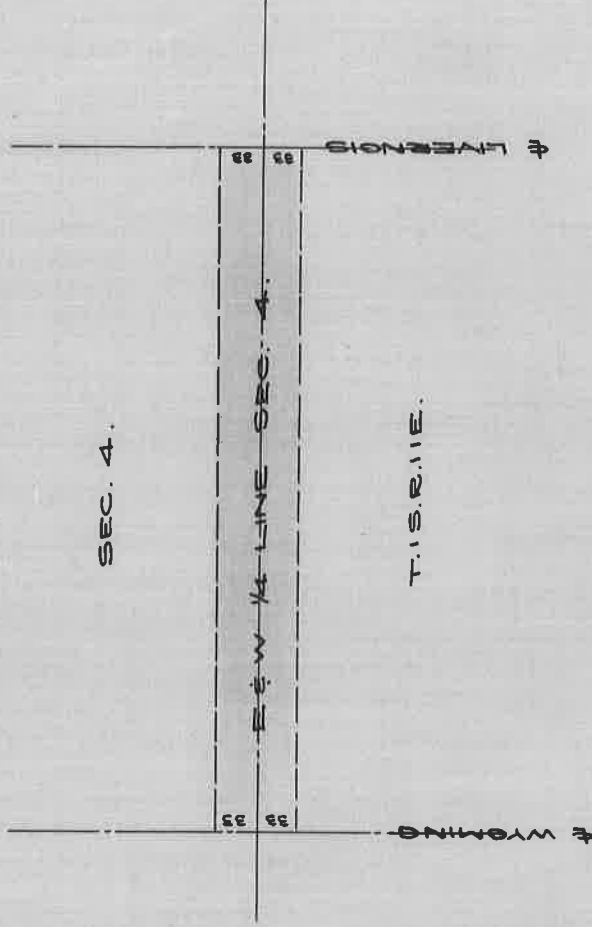
RECORD OF A ROAD.

(PEMBROKE AVE.)

LIVERNOIS TO WYOMING AVE.,

DATED AUG. 9, 1877.

PAGES 150-152



DEPARTMENT OF PUBLIC WORKS  
CITY ENGINEER'S OFFICE

412 CITY HALL

SCALE 1" = 40' NO SCALE

J.E.A.

*Pages 150-152*