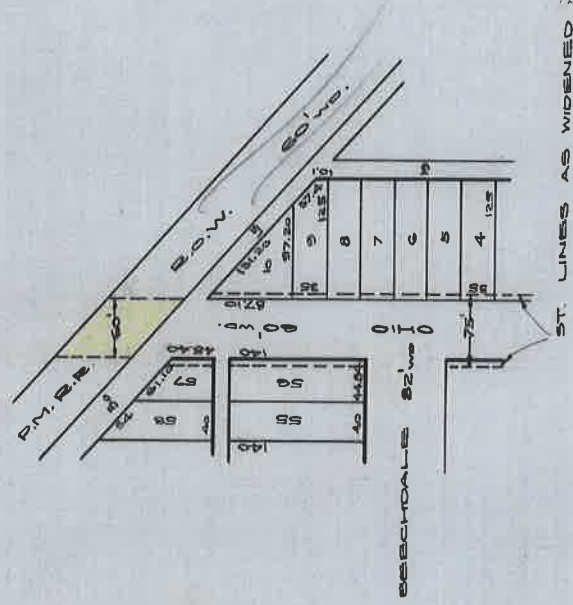


# P.M.R.R. CROSSING AT OHIO AVE.

AS PLATTED IN LOHMAN'S SUB'D.

ASSESSMENT MADE FEB 1, 1916 WITH GREENFIELD TWP.

PP. 104-87 - HWY. COM. RECORDS OF 6-9-06 TO 1-22-24



ST. LINES AS WIDENED

DEPARTMENT OF PUBLIC WORKS  
CITY ENGINEER'S OFFICE

401 CITY HALL  
SCALE 1"= 200'

3-14-28

J.E.A.

30