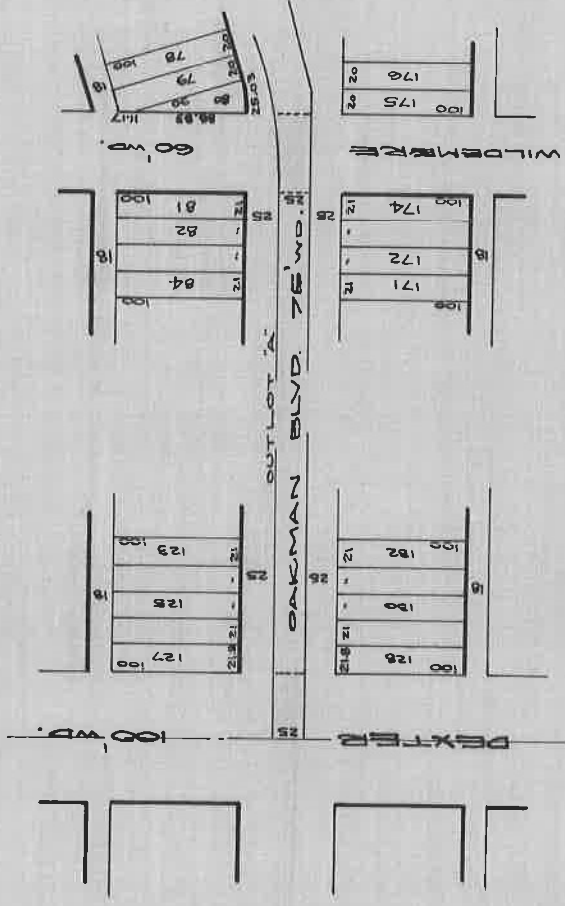


DEXTER & WILDEMERE EASEMENTS

BEING PARTS OF O.L. "A" OF OAKMAN'S FORD HWY. & DEXTER SUB.

EASEMENTS GIVEN TO GREENFIELD TWP.

P. 230 . HWY. COM. RECORDS OF 6-9-06 TO 1-22-24.



DEPARTMENT OF PUBLIC WORKS
CITY ENGINEER'S OFFICE
401 CITY HALL

SCALE 1" = 150'
3-22-28
J.E.A.