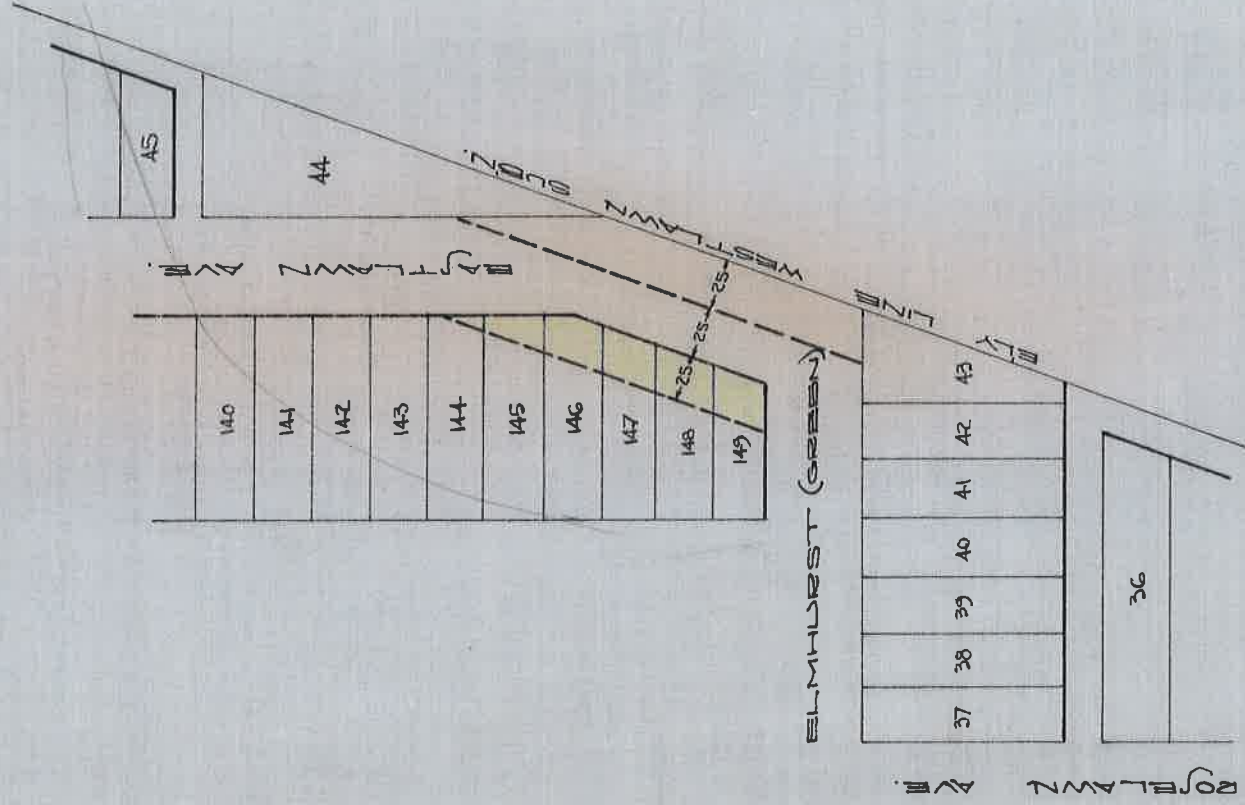


**EASTLAWN ALTERATION  
THEN GREENLAWN AVE.**

**N. OF ELMHURST (GREEN)  
NOW OAKMAN BLVD.**

DATED NOV. 1, 1916.



DEPARTMENT OF PUBLIC WORKS  
CITY ENGINEER'S OFFICE

412 CITY HALL

SCALE 1" = 100'

4-27-28

J.E.A.