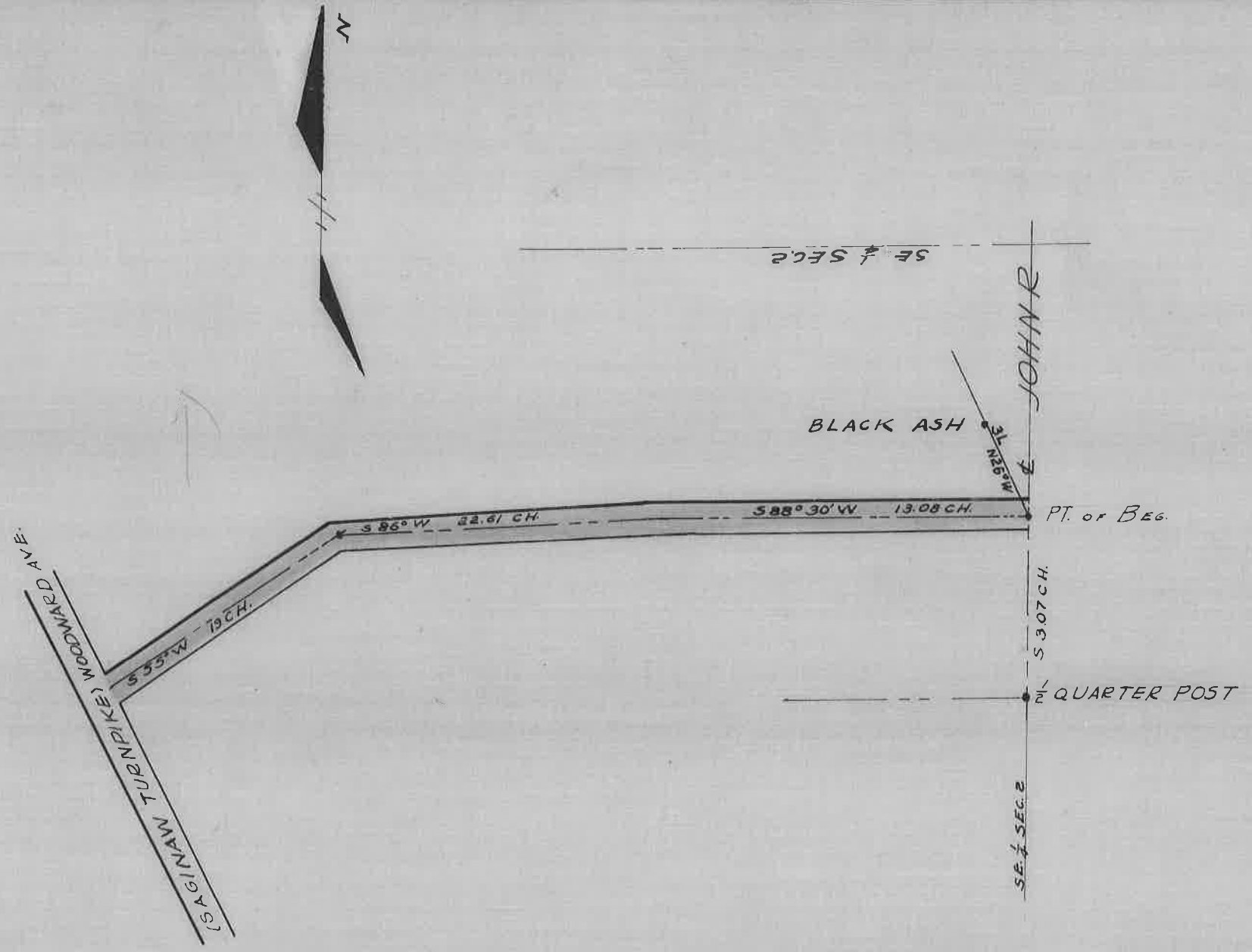


OPENING OF STREET (NO NAME) IN SEC. 2
FROM JOHN R TO WOODWARD

GREENFIELD TWP HWY REC. 1836 TO 1887 P. 13

OCT. 10, 1845



DEPARTMENT OF PUBLIC WORKS
 CITY ENGINEER'S OFFICE
 412 CITY HALL
 SCALE 1" = 100 FEET

W.A.S.