

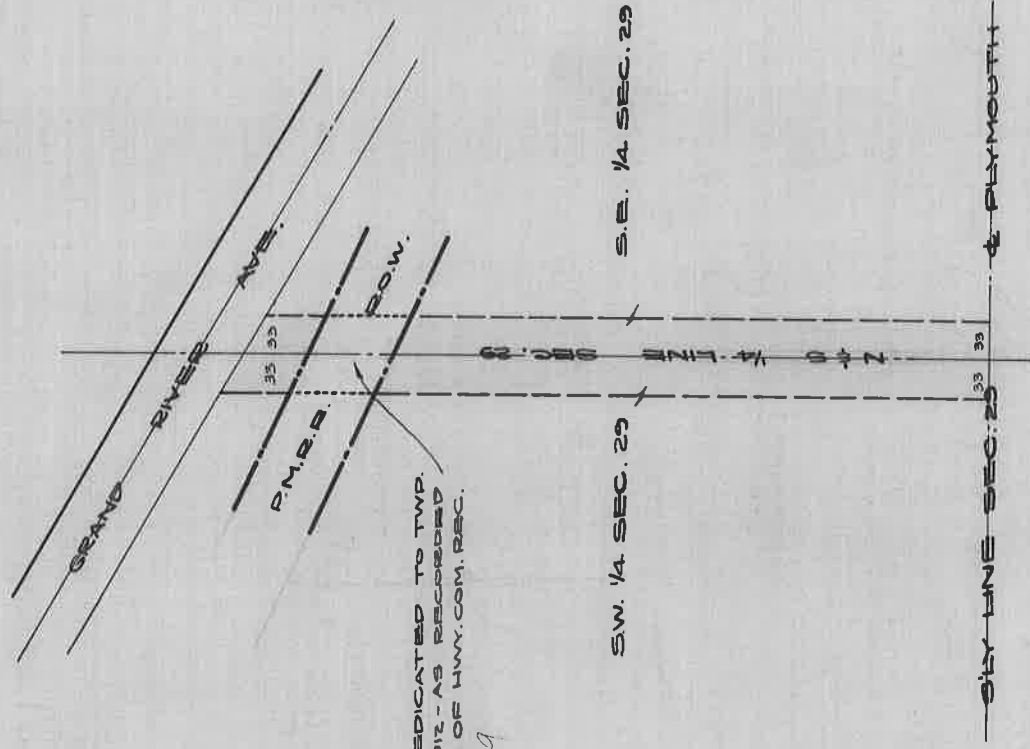
# MEYERS ROAD

FROM GRAND RIVER TO S. LINE OF SEC. 29 EXCEPT P.M.R.R. R.O.W.

DEDICATED DEC. 20, 1911 TO GREENFIELD TWP.

PAGE 79 OF HWY. COM. RECORDS OF 6-9-06 TO 1-23-24.

NOTE: SEE MEYERS AMONG GREENFIELD DEEDS



R.O.W. DEDICATED TO TWP.  
MAR. 4, 1912 - AS RECORDED  
ON P. 82 OF HWY. COM. REC.

+ 87-89

DEPARTMENT OF PUBLIC WORKS  
CITY ENGINEER'S OFFICE

401 CITY HALL

SCALE 1"= 660' 3-2-28