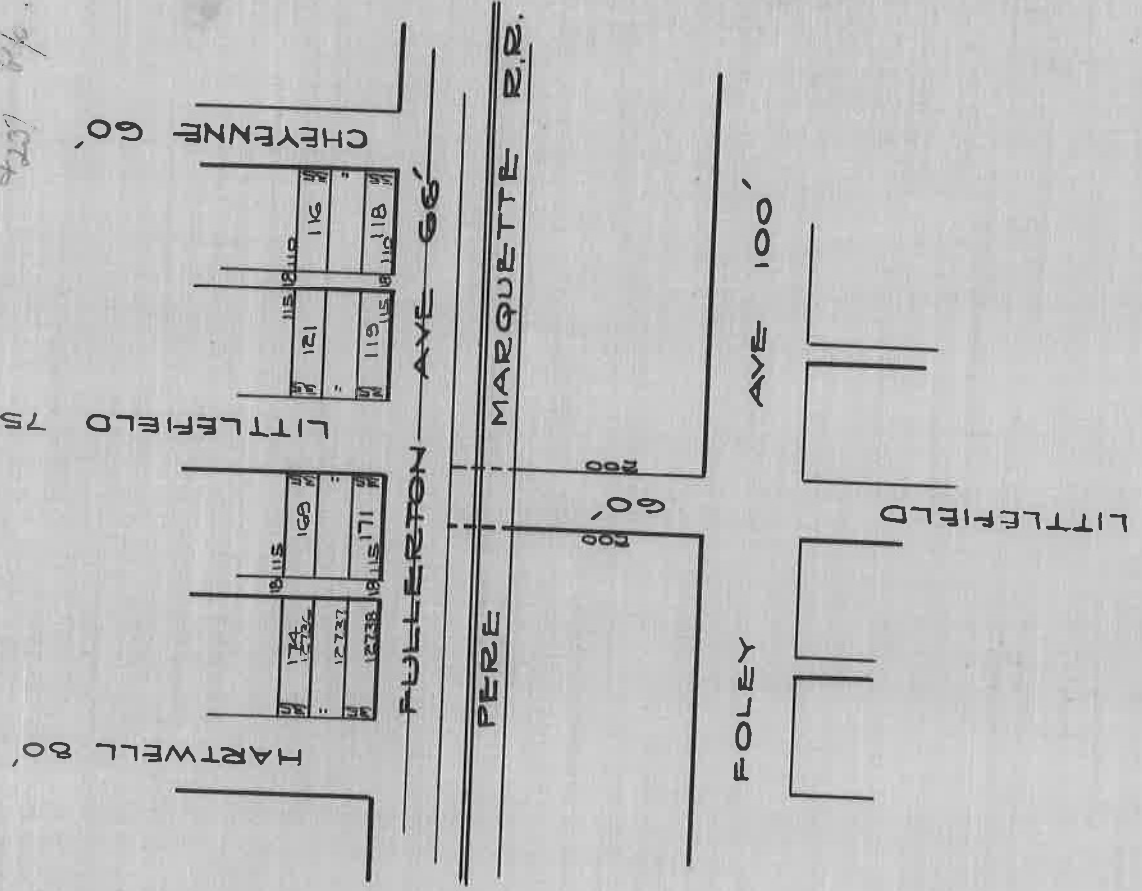


PERMISSION GRANTED TO OPEN  
 LITTLEFIELD (WINFIELD) AVE ACROSS  
 P.M.R.R. R.O.F.W., BY THE MICH. PUBLIC  
 UTILITIES COMM. AT SESSION HELD ON  
 DEC. 1, 1920.

BY THOS. W. WARD ON DEC. 6, 1920  
 GREENFIELD TWP. BOARD PROC. 1915-24 PAGE 296  
*Pub. Util. R.R. Co. v. Greenfield Twp. Board*  
*207 Op. 394-347*



DEPARTMENT OF PUBLIC WORKS  
 CITY ENGINEER'S OFFICE  
 412 CITY HALL  
 SCALE 1"=200'    **SEPT 20, 1928**  
 A.R.F.