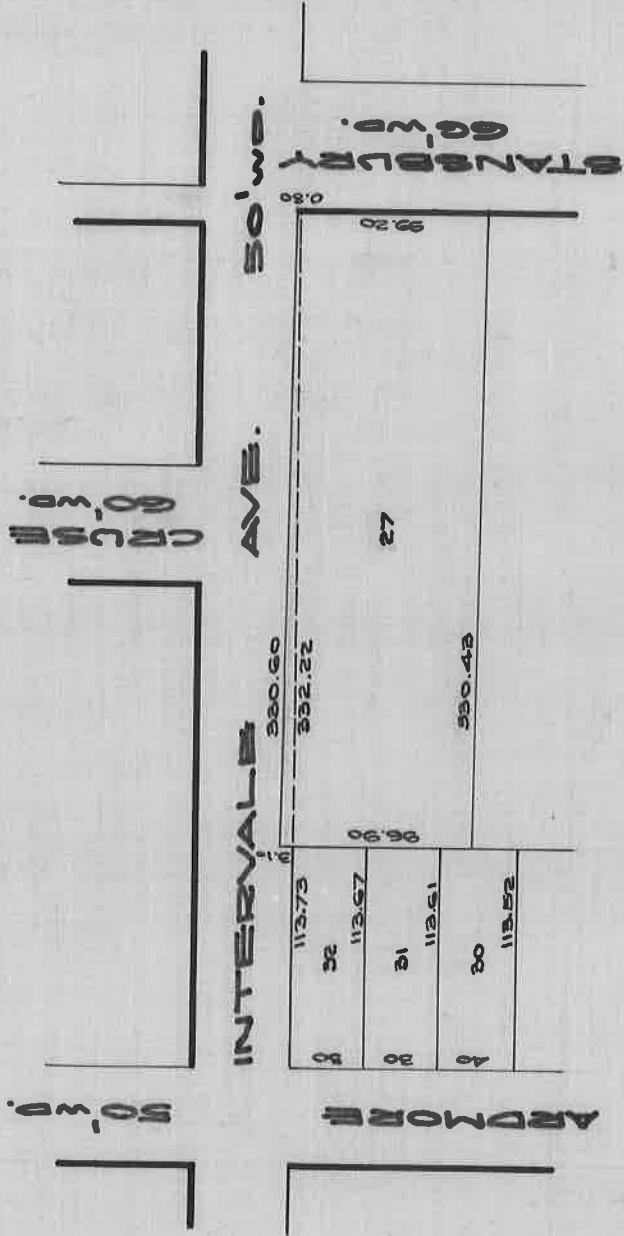


# INTERVALE AVE.

BEING PART OF LOT 27 OF OSCAR LE SEUR'S EWN.  
 DEEDED NOV. 15, 1915 TO GREENFIELD TOWNSHIP.  
 PG. 178 - HWY. COM. RECORDS OF 6-9-06 TO 1-22-24.



DEPARTMENT OF PUBLIC WORKS  
 CITY ENGINEER'S OFFICE

401 CITY HALL  
 SCALE 1" = 100' 1-5-26.

70

69