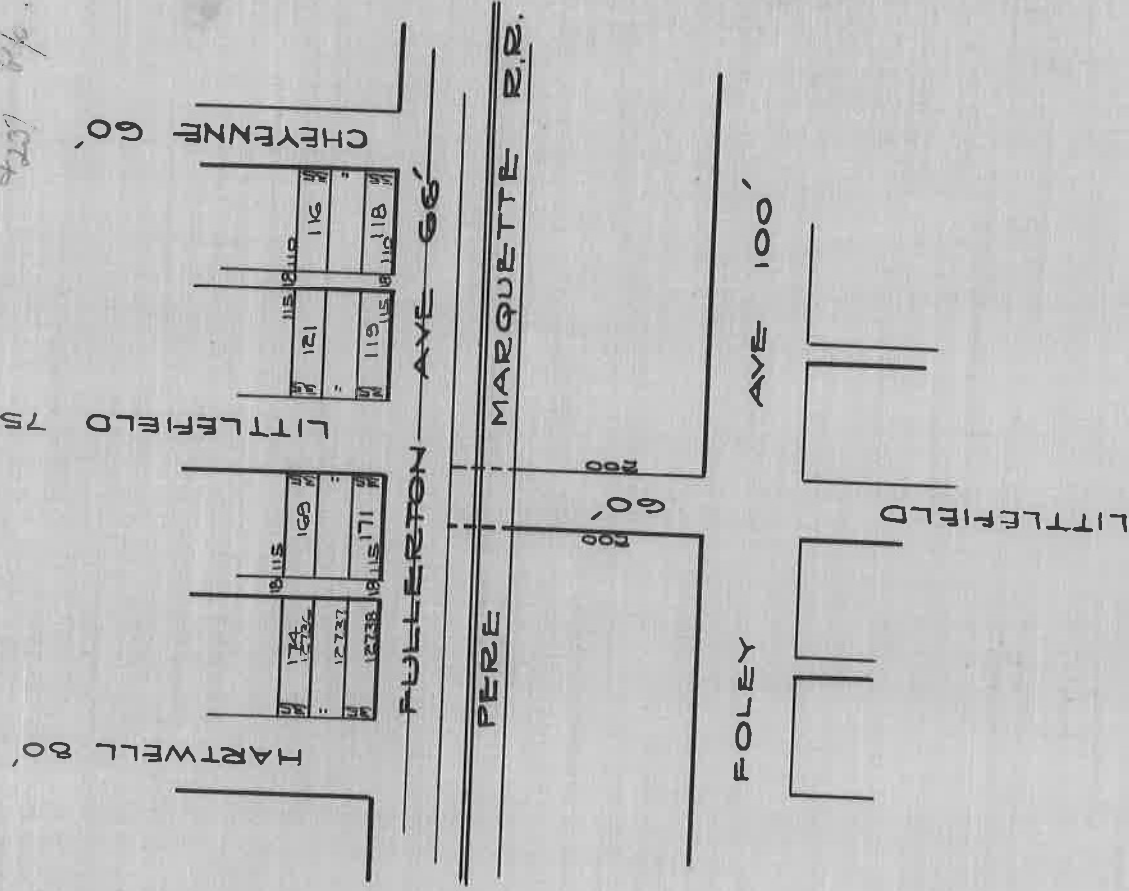


PERMISSION GRANTED TO OPEN
 LITTLEFIELD (WINFIELD) AVE ACROSS
 P.M. R.R. R.O.F.W., BY THE MICH. PUBLIC
 UTILITIES COMM. AT SESSION HELD ON
 DEC. 1, 1920.

BY THOS. W. WARD ON DEC. 6, 1920
 GREENFIELD TWP. BOARD PROC. 1915-24 PAGE 296
Pub. Util. R.R. Co. v. Greenfield Twp. Board
207 Op. 394-347



DEPARTMENT OF PUBLIC WORKS
 CITY ENGINEER'S OFFICE
 412 CITY HALL
 SCALE 1"=200' SEPT 20, 1928
 A.R.F.