

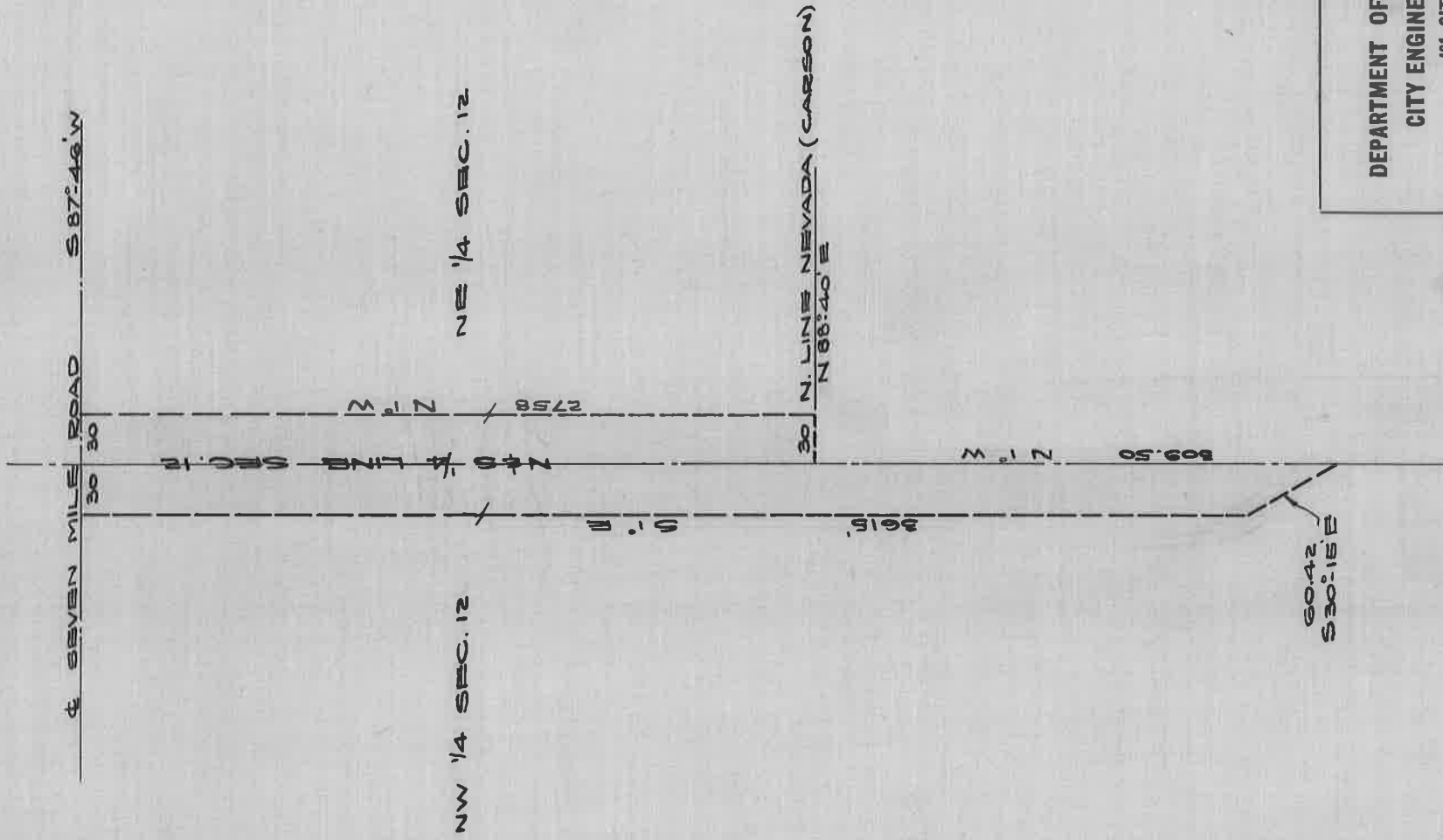
HAWTHORNE (CONANT) AVE.

BEING PART OF SEC. 12 E & W OF N & S 1/4 LINE

DEEDED MAR. 21, 1908 BY GREENFIELD TWP.

PP. 21-27 - HWY. COM. REC. OF 6-9-06 TO 1-22-24.

SEE HAWTHORNE UNDER GREENFIELD DEEDS



DEPARTMENT OF PUBLIC WORKS
 CITY ENGINEER'S OFFICE
 401 CITY HALL
 SCALE 1" = 100'
 3-6-28
J.E.A.