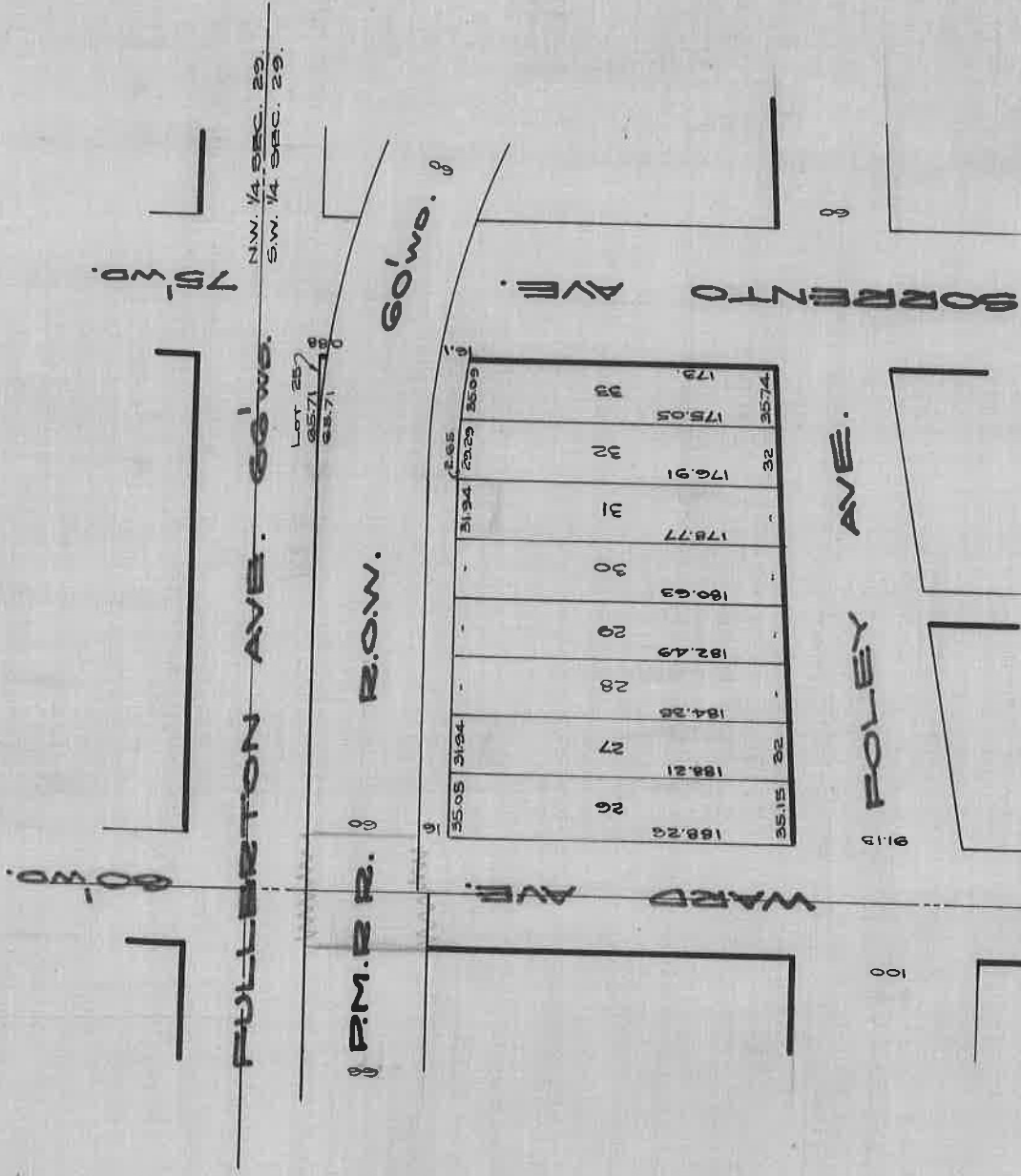


FULLERTON AVE.

BEING LOT 25 OF FRANK B. WALLACE'S GRAND RIVER VILLAS SUB'D.

DEEDED APRIL 25, 1919 TO GREENFIELD TWP.

PG. 232. HWY. COM. RECORDS OF 6-09-06 TO 1-22-24.



DEPARTMENT OF PUBLIC WORKS
CITY ENGINEER'S OFFICE

401 CITY HALL
SCALE 1" = 100'
JAN 6, '28

(17)

EA.