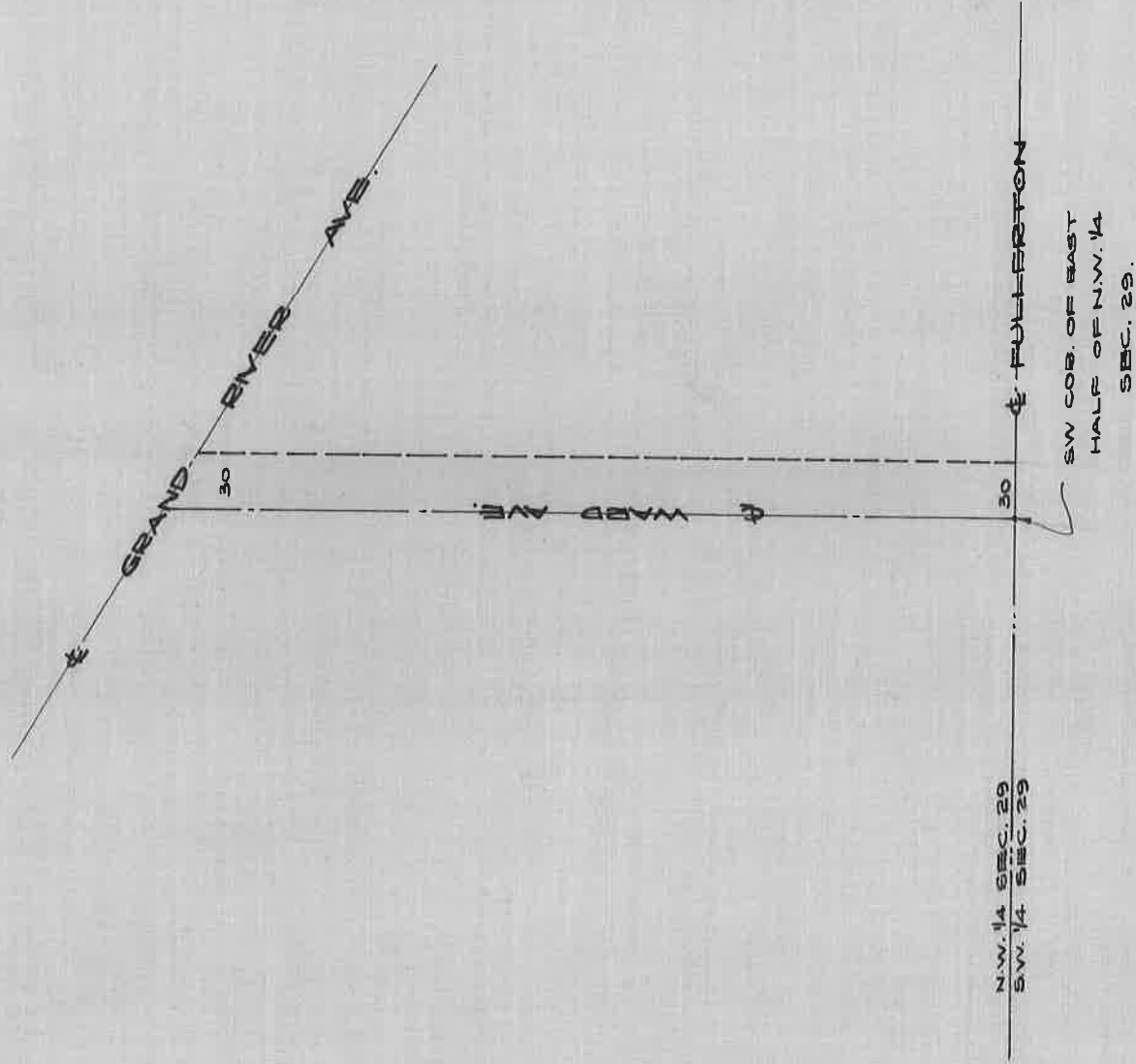


DEDICATION OF E. 1/2 WARD AVE.

BEING W 30' OF E 1/2 OF N.W. 1/4 SEC. 29 - SOUTH OF GRAND RIVER AVE.

DEEDED MARCH 31, 1913 . TO GREENFIELD TOWNSHIP

PG. 105 - HWY. COM. RECORDS OF 6-9-06 TO 1-22-24.



DEPARTMENT OF PUBLIC WORKS
CITY ENGINEER'S OFFICE
401 CITY HALL

SCALE 1"= 100' 12-27-27.

J.E.A.