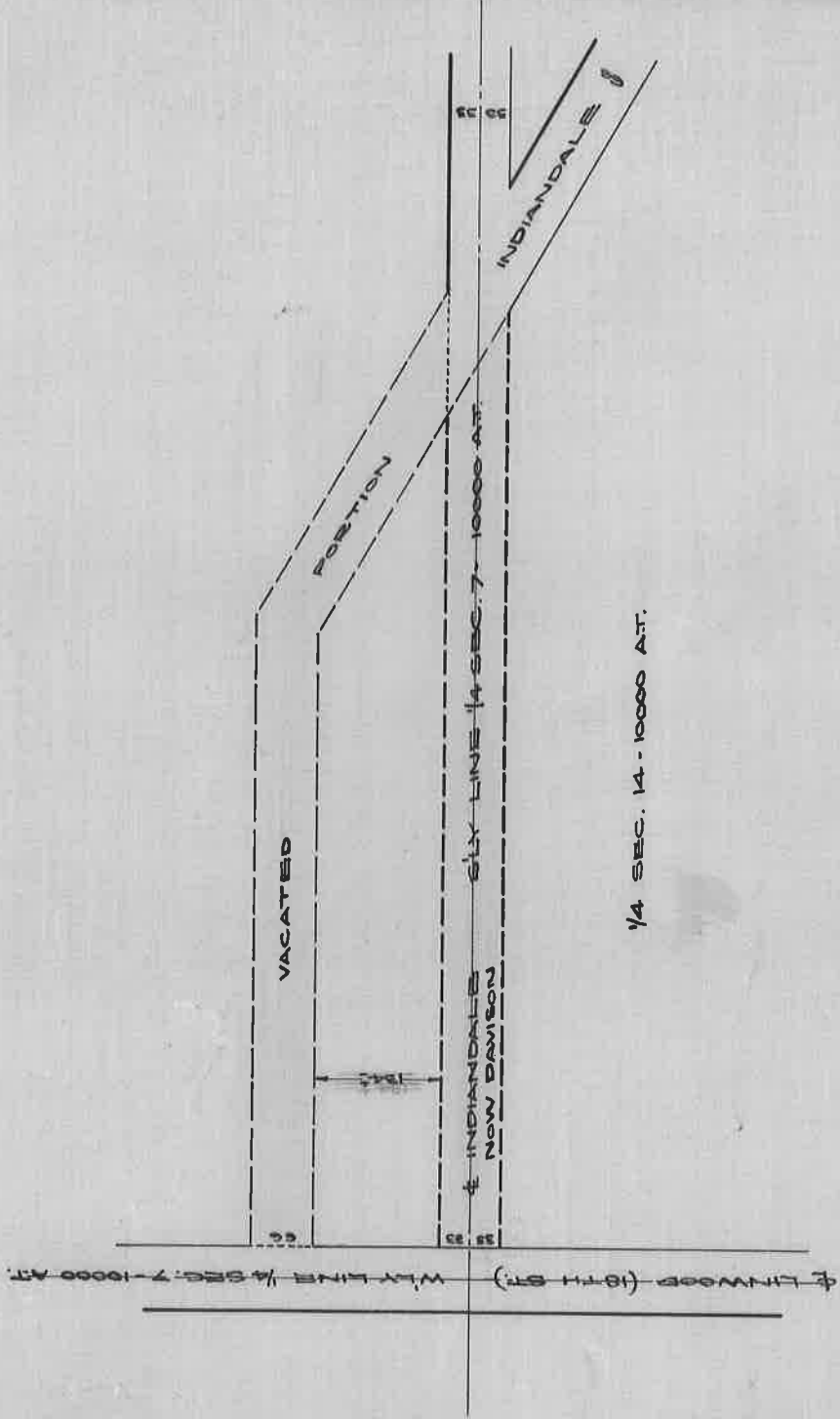


GLENDALE OR INDIANDALE AVE.

RELOCATION BET. INT. OF INDIANDALE & DAVISON & LINWOOD (18TH ST.)

PETITIONED FOR ALTERATION MAR. 8, 1916 TO GREENFIELD TWP.

PP. 197-204 HWY. COM. RECORDS OF 6-9-06 TO 1-22-24.



DEPARTMENT OF PUBLIC WORKS
CITY ENGINEER'S OFFICE
401 CITY HALL

SCALE 1" = 200' 3-5-28

(15)

J.E.A.