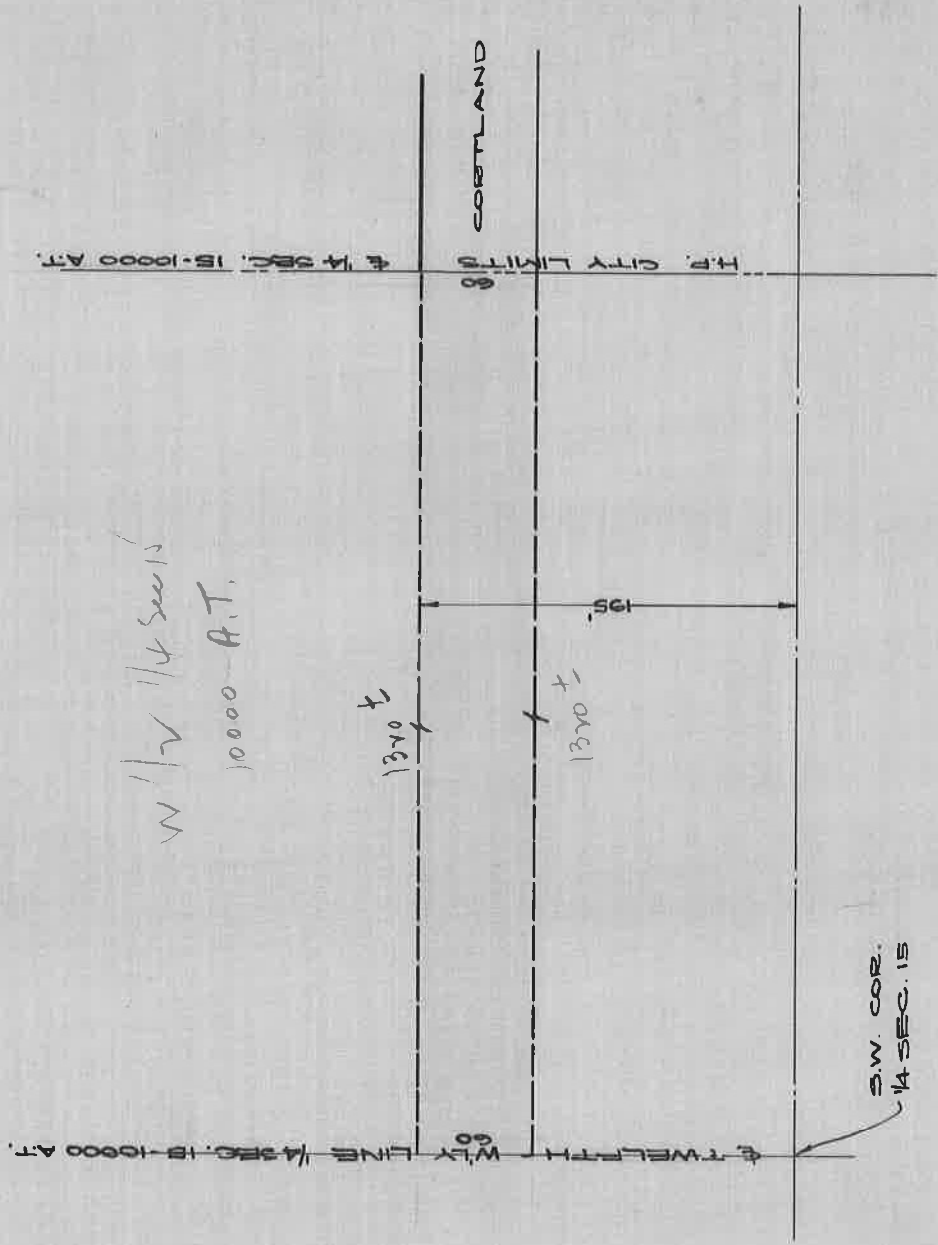


CORTLAND AVE.

BEING THE N¹/₂LY 60' OF THE 8LY 195' OF W. 1/2 OF 1/4 SEC. 15-10, A.T.

DEDICATED NOV. 1, 1909 TO GREENFIELD TOWN'SHIP.

PP. 52-53 HWY. COM. RECORDS OF 6-9-00 TO 1-22-24.



DEPARTMENT OF PUBLIC WORKS
CITY ENGINEER'S OFFICE

401 CITY HALL
SCALE 1" = 100'

3-5-28

J.E.A.