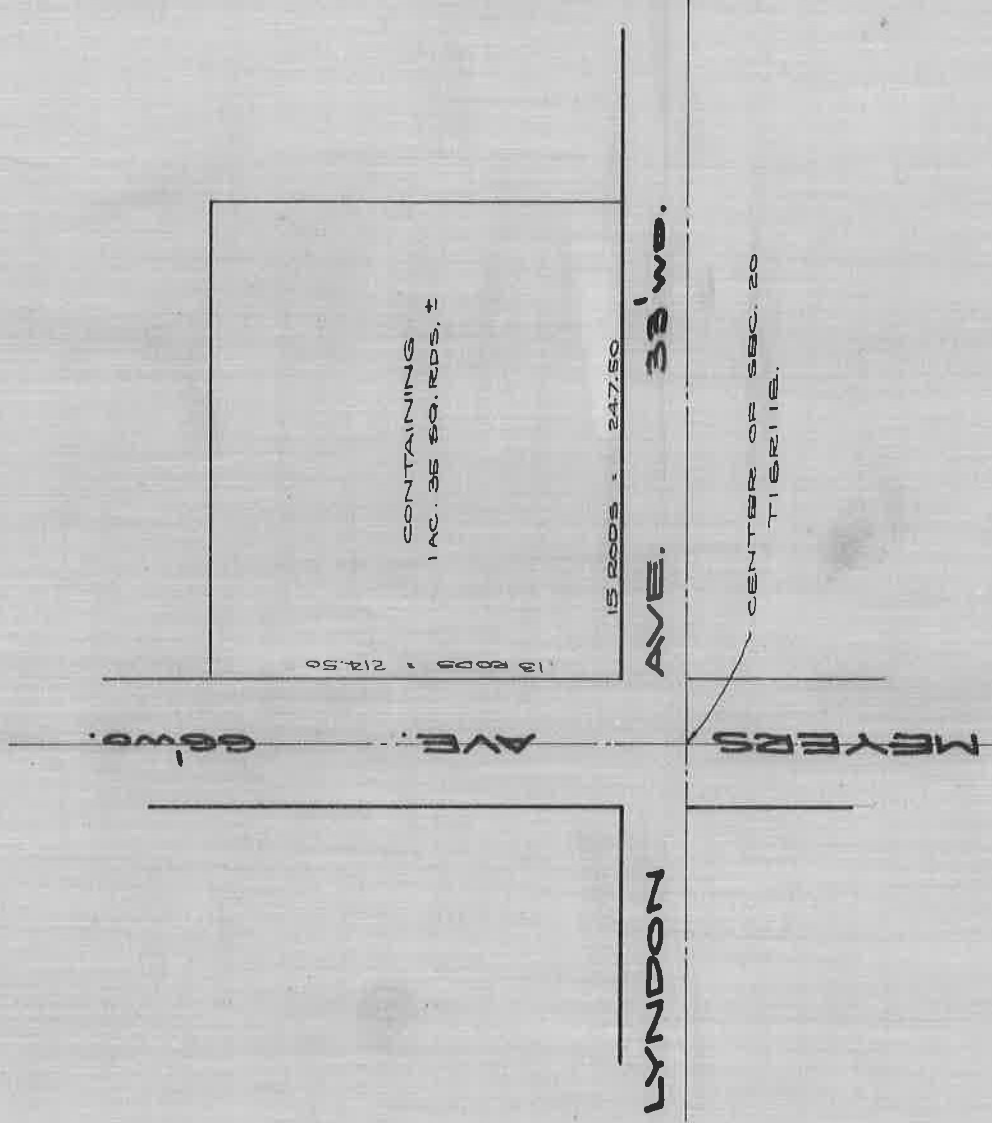


ADD'L LAND FOR CEMETERY

TAKEN BY ORDER OF COURT FROM

JOHN F. C. MEYER DEC. 6, 1895.



DEPARTMENT OF PUBLIC WORKS
 CITY ENGINEER'S OFFICE
 412 CITY HALL
 SCALE 1" = 100' APR. 24, '28.
 J. E. A.