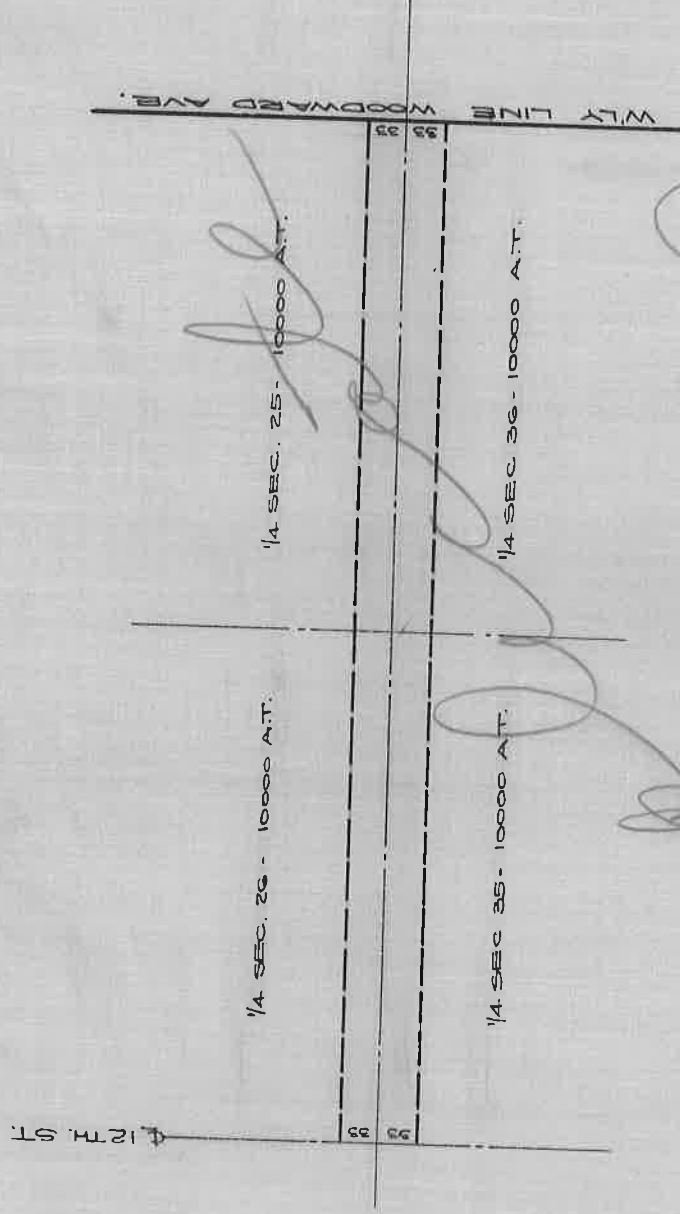


CANIFF ROAD
NOW AN ALLEY NORTH OF CALVERT

OPENED BY GREENFIELD TWP. SEPT. 3, 1875.

PAGE 114



DEPARTMENT OF PUBLIC WORKS
CITY ENGINEER'S OFFICE
412 CITY HALL
SCALE 1" = 80' SCALE 4" = 25' - 28'

Fig. 114

1875