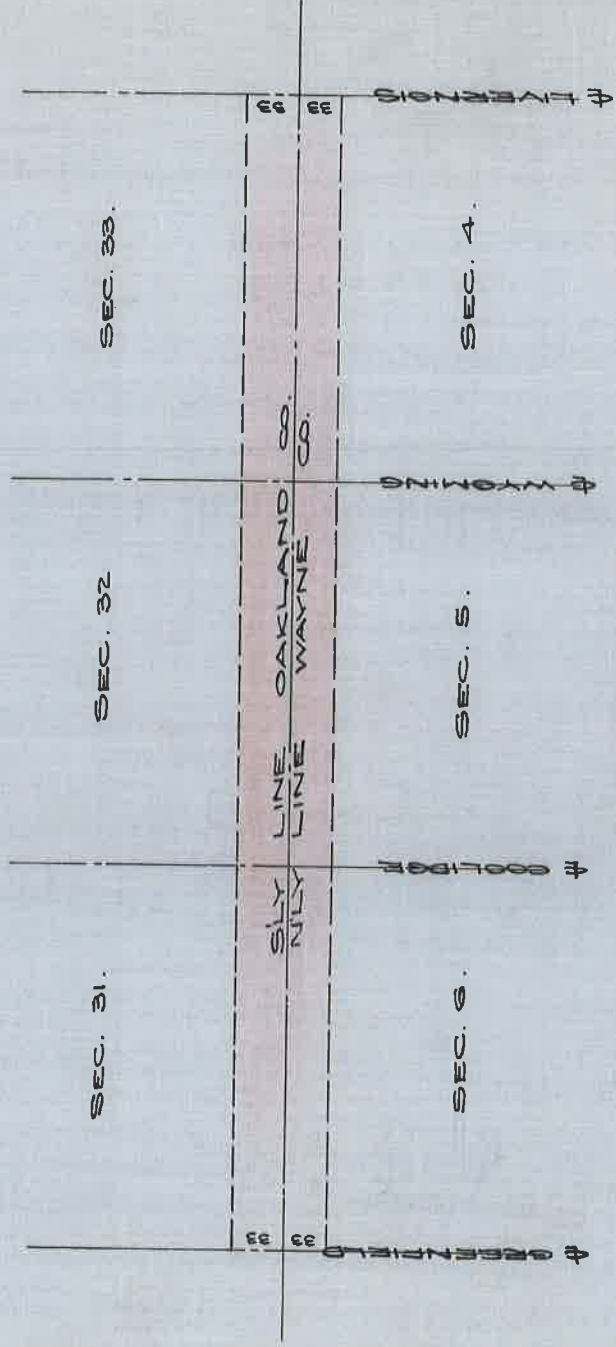


# SURVEY OF A ROAD.

(EIGHT MILE ROAD.)

DATED SEPT. 26, 1872.

PAGE 90-1



DEPARTMENT OF PUBLIC WORKS  
CITY ENGINEER'S OFFICE

412 CITY HALL

SCALE 1" = 80' SCALE

V.E.A.

*Page 90-1*