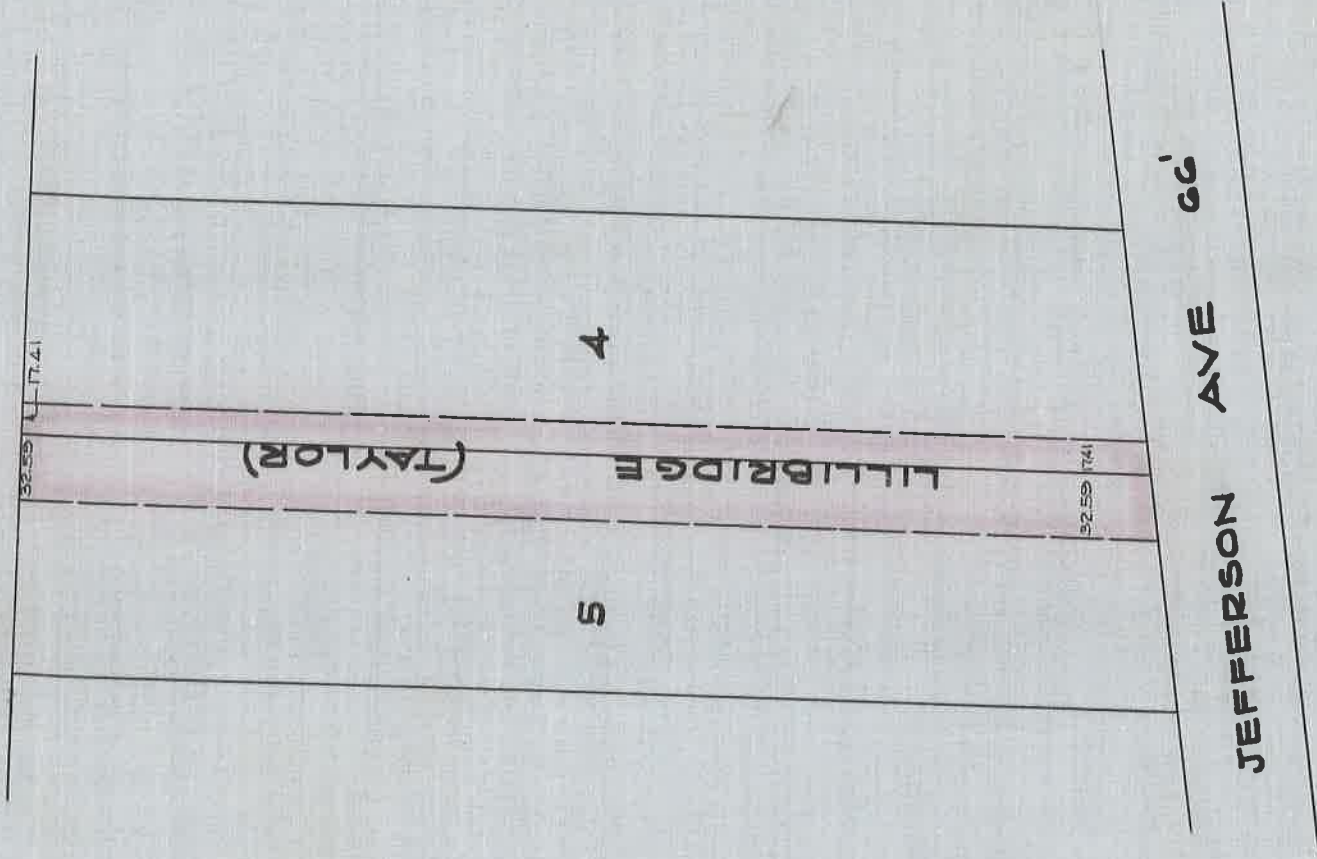


**OPENING LILLIBRIDGE (TAYLOR) AVE
NORTH OF JEFFERSON AVE**

VERDICT RENDERED SEPT. 12, 1904
SEE PAGE 328 FAIRVIEW BOOK NO. 2, J.C.C.
W 17.41' OF LOT 4 E. 32.59' LOT 5 OF O'FLYNN'S SUB'N PC 688



DEPARTMENT OF PUBLIC WORKS
CITY ENGINEER'S OFFICE
412 CITY HALL

SCALE 1"=100'
9-24-30

S.F.C.