

COMMISSION:

E. V. ERICKSON  
CHAIRMAN

CHARLES H. HEWITT  
VICE CHAIRMAN

PETER B. FLETCHER

~~XXXXXXXXXXXX~~

Carl V. Pellonpaa

STATE OF MICHIGAN



WILLIAM G. MILLIKEN, GOVERNOR

DEPARTMENT OF STATE HIGHWAYS AND TRANSPORTATION

STATE HIGHWAYS BUILDING - POST OFFICE DRAWER K - LANSING, MICHIGAN 48904

JOHN P. WOODFORD, STATE HIGHWAY DIRECTOR

TRANSFER OF SERVICE ROADS ADJACENT TO  
EDEL FORD FREEWAY (1-94) IN CITY OF DETROIT

WHEREAS, the State Highway Commission has determined that the best interests of the public will be served if the following described service roads, having now been constructed, be turned over to the City of Detroit,

1. Commencing on the north side of the Edsel Ford Freeway (1-94) from the center of Merwin, east to the center of Navin in the City of Detroit. (0.05 miles approximately)
2. Commencing on the south side of the Edsel Ford Freeway (1-94) at the intersection of Michigan Avenue and Weir, thence northwesterly on Weir to the center of the alley northwesterly of Michigan Avenue in the City of Detroit. (0.03 miles approximately)
3. Commencing on the north side of the Edsel Ford Freeway (1-94) from the alley west of Sharon east to alley east of Homedale in the City of Detroit. (0.09 miles approximately)
4. Commencing on the north side of the Edsel Ford Freeway (1-94) from the center of Cabot east to alley east of Cabot in the City of Detroit. (0.03 miles approximately)
5. Commencing on the north side of the Edsel Ford Freeway (1-94) from the center of Lawndale east to the center of Trenton in the City of Detroit. (0.06 miles approximately)
6. Commencing on the north side of the Edsel Ford Freeway (1-94) from the alley west of Ogden east to the alley east of Renville in the City of Detroit. (0.10 miles approximately)
7. Commencing on the north side of the Edsel Ford Freeway (1-94) from the alley west of St. Lawrence east to alley east of Casper in the City of Detroit. (0.29 miles approximately)



8. Commencing on the south side of the Edsel Ford Freeway (I-94) from the center of St. Lawrence east to the center of Elmer in the City of Detroit. (0.05 miles approximately)
9. Commencing on the north side of the Edsel Ford Freeway (I-94) from the center of Central east to the center of Proctor in the City of Detroit. (0.09 miles approximately)
10. Commencing on the south side of the Edsel Ford Freeway (I-94) from the center of Casper east to the center of Cecil in the City of Detroit. (0.30 miles approximately)
11. Commencing on the south side of the Edsel Ford Freeway (I-94) from the alley west of Larkins east to the center of Braden in the City of Detroit. (0.10 miles approximately)
12. Commencing on the south side of the Edsel Ford Freeway (I-94) from the alley west of Daniels east to Linzee (opposite freeway station 374) in the City of Detroit. (0.09 miles approximately)
13. Commencing on the north side of the Edsel Ford Freeway (I-94) from the center of northbound Livernois east to the center of Military in the City of Detroit. (0.06 miles approximately)
14. Commencing on the south side of the Edsel Ford Freeway (I-94) from the center of Military east to the alley east of Military in the City of Detroit. (0.03 miles approximately)
15. Commencing on the south side of the Edsel Ford Freeway (I-94) from the center of Howell east to the center of 35th in the City of Detroit. (0.18 miles approximately)
16. Commencing on the north side of the Edsel Ford Freeway (I-94) from the center of Wesson east to the center of 33th in the City of Detroit. (0.23 miles approximately)
17. Commencing on the north side of the Edsel Ford Freeway (I-94) from the alley west of 32nd east to the alley east of 32nd in the City of Detroit. (0.06 miles approximately)
18. Commencing on the south side of the Edsel Ford Freeway (I-94) from the center of 33rd east to alley east of 31st in the City of Detroit. (0.15 miles approximately)
19. Commencing on the north side of the Edsel Ford Freeway (I-94) from the alley west of 30th east to the center of Warren in the City of Detroit. (0.15 miles approximately)
20. Commencing on the south side of the Edsel Ford Freeway (I-94) from the center of 30th east to the center of Lovett in the City of Detroit. (0.17 miles approximately)
21. Commencing on the north side of the Edsel Ford Freeway (I-94) from the center of Lovett east to the center of Scotten in the City of Detroit. (0.08 miles approximately)

22. Commencing on the south side of the Edsel Ford Freeway (I-94) from the alley west of Bangor east to the alley east of Bangor in the City of Detroit. (0.06 miles approximately)
23. Commencing on the north side of the Edsel Ford Freeway (I-94) from the alley west of Vinewood east to Vinewood in the City of Detroit. (0.03 miles approximately)
24. Commencing on the south side of the Edsel Ford Freeway (I-94) from the alley west of Vinewood east to alley north of Kirby (opposite freeway station 445 + 50) in the City of Detroit. (0.06 miles approximately)
25. Commencing on the north side of the Edsel Ford Freeway (I-94) from the alley west of Roosevelt east to the alley east of 25th in the City of Detroit. (0.11 miles approximately)
26. Commencing on the south side of the Edsel Ford Freeway (I-94) from the center of McKinley east to the alley east of Roosevelt in the City of Detroit. (0.09 miles approximately)
27. Commencing on the north side of the Edsel Ford Freeway (I-94) from the alley west of 23rd east to the center of 23rd in the City of Detroit. (0.03 miles approximately)
28. Commencing on the north side of the Edsel Ford Freeway (I-94) from the center of Stanton east to the alley east of 15th in the City of Detroit. (0.16 miles approximately)
29. Commencing on the north side of the Edsel Ford Freeway (I-94) from the center of 14th east to the center of Wabash in the City of Detroit. (0.07 miles approximately)
30. Commencing on the north side of the Edsel Ford Freeway (I-94) from the alley west of Hecla east to the center of Commonwealth in the City of Detroit. (0.13 miles approximately)
31. Commencing on the north side of the Edsel Ford Freeway (I-94) from the alley west of Lincoln east to the center of Brooklyn in the City of Detroit. (0.10 miles approximately)
32. Commencing on the south side of the Edsel Ford Freeway (I-94) from the alley west of Lincoln east to the center of Brooklyn in the City of Detroit. (0.10 miles approximately)
33. Commencing on the north side of the Edsel Ford Freeway (I-94) from the center of Cass east to the center of Woodward in the City of Detroit. (0.10 miles approximately)
34. Commencing on the south side of the Edsel Ford Freeway (I-94) from the center of John R. east to the center of Beaubien in the City of Detroit. (0.21 miles approximately)
35. Commencing on the south side of the Edsel Ford Freeway (I-94) from the alley west of St. Aubin east to existing Harper (Opposite freeway station 634) in the City of Detroit. (0.15 miles approximately)

36. Commencing on the south side of the Edsel Ford Freeway (I-94) from the center of St. Aubin easterly and northerly to the center of Piquette on the north side of the Edsel Ford Freeway (I-94) in the City of Detroit. (0.17 miles approximately)
37. Commencing on the north side of the Edsel Ford Freeway (I-94) from the center of Chene east to the center of southbound East Grand Boulevard in the City of Detroit. (0.26 miles approximately)
38. Commencing on the north side of the Edsel Ford Freeway (I-94) from the center of Moran east to the center of Ellery in the City of Detroit. (0.09 miles approximately)
39. Commencing on the north side of the Edsel Ford Freeway (I-94) from the center of Saginaw east to existing Harper (opposite freeway station 704 + 50) in the City of Detroit. (0.66 miles approximately)
40. Commencing on the south side of the Edsel Ford Freeway (I-94) from the center of Harper (opposite freeway station 660 + 50) easterly and northerly to the center of the north service road (opposite freeway station 686 + 25) on the north side of the Edsel Ford Freeway (I-94) in the City of Detroit. (0.53 miles approximately)
41. Commencing on the south side of the Edsel Ford Freeway (I-94) from the intersection of Holborn and Mt. Elliott northwesterly to the center of Piquette on the north side of the Edsel Ford Freeway (I-94) in the City of Detroit. (0.13 miles approximately)
42. Commencing on the south side of the Edsel Ford Freeway (I-94) from the center of Lambert northwesterly to the center of the south to north Harper connector (opposite freeway station 680 + 00) in the City of Detroit. (0.02 miles approximately)
43. Commencing on the south side of the Edsel Ford Freeway (I-94) from east of the Penn-Central Railroad (opposite freeway station 691 + 00) east to point east of Baldwin (opposite freeway station 721 + 90) in the City of Detroit. (0.60 miles approximately)
44. Commencing on the north side of the Edsel Ford Freeway (I-94) from the center of Frontenac east to a point east of Baldwin (opposite freeway station 721 + 60) in the City of Detroit. (0.29 miles approximately)
45. Commencing on the south side of the Edsel Ford Freeway (I-94) from the center of Maxwell east to the alley east of Fischer in the City of Detroit. (0.31 miles approximately)
46. Commencing on the south side of the Edsel Ford Freeway (I-94) from the center of Crane east to the center of Rohns in the City of Detroit. (0.06 miles approximately)

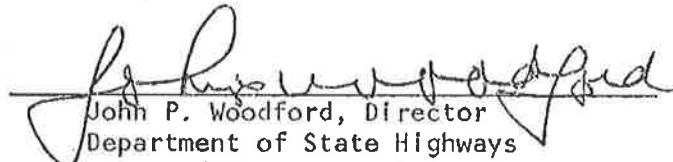
47. Commencing on the north side of the Edsel Ford Freeway (I-94) from the alley west of Rohns east to the alley east of Holcomb in the City of Detroit. (0.11 miles approximately)
48. Commencing on the south side of the Edsel Ford Freeway (I-94) from the alley west of Holcomb east to the alley east of Belvidere in the City of Detroit. (0.13 miles approximately)
49. Commencing on the north side of the Edsel Ford Freeway (I-94) from the alley west of McClellan east to the center of May in the City of Detroit. (0.08 miles approximately)
50. Commencing on the north side of the Edsel Ford Freeway (I-94) from the alley west of May east to the center of May in the City of Detroit. (0.03 miles approximately)
51. Commencing on the south side of the Edsel Ford Freeway (I-94) from the alley east of Gratiot east to the center of Felch in the City of Detroit. (0.04 miles approximately)
52. Commencing on the south side of the Edsel Ford Freeway (I-94) from the center of Cooper east to the alley east of Cooper in the City of Detroit. (0.03 miles approximately)
53. Commencing on the north side of the Edsel Ford Freeway (I-94) from a point east of Gratiot (opposite freeway station 768 + 80) east to the alley east of Montclair in the City of Detroit. (0.58 miles approximately)
54. Commencing on the south side of the Edsel Ford Freeway (I-94) from the center of Pennsylvania east to the alley east of Springfield in the City of Detroit. (0.67 miles approximately)
55. Commencing on the south side of the Edsel Ford Freeway (I-94) from a point east of the Detroit Toledo Railroad (opposite freeway station 809 + 45) east to the center of Beniteau in the City of Detroit. (0.07 miles approximately)
56. Commencing on the north side of the Edsel Ford Freeway (I-94) from a point east of the Detroit Toledo Railroad (opposite freeway station 809 + 00) east to the alley east of Beniteau in the City of Detroit. (0.12 miles approximately)
57. Commencing on the north side of the Edsel Ford Freeway (I-94) from the intersection of Harper and St. Jean north to the center of Conners in the City of Detroit. (0.06 miles approximately)
58. Commencing on the south side of the Edsel Ford Freeway (I-94) from the center of St. Jean east to the center of southbound Conners in the City of Detroit. (0.04 miles approximately)
59. Commencing on the south side of the Edsel Ford Freeway (I-94) from the intersection of Conners and Gunston northwesterly to the center of St. Jean on the north side of the Edsel Ford Freeway (I-94) in the City of Detroit. (0.27 miles approximately)

60. Commencing on the south side of the Edsel Ford Freeway (I-94) from the intersection of Conners and Gunston northerly to the center of Conners on the north side of the Edsel Ford Freeway (I-94) in the City of Detroit. (0.31 miles approximately)
61. Commencing on the south side of the Edsel Ford Freeway (I-94) from the center of Gunston east to the center of Norcross in the City of Detroit. (0.31 miles approximately)
62. Commencing on the south side of the Edsel Ford Freeway (I-94) from the intersection of Barrett and the south service road northwesterly to the center of Harper (opposite freeway station 834) on the north side of the Edsel Ford Freeway (I-94) in the City of Detroit. (0.06 miles approximately)
63. Commencing on the south side of the Edsel Ford Freeway (I-94) from the center of Newport east to the center of Harper (opposite freeway station 941) in the City of Detroit. (1.07 miles approximately)
64. Commencing on the north side of the Edsel Ford Freeway (I-94) from the center of Chalmers east to the center of southbound Outer Drive in the City of Detroit. (0.22 miles approximately)
65. Commencing on the north side of the Edsel Ford Freeway (I-94) from a point west of Chatsworth (opposite freeway station 929 + 20) east to the center of Chatsworth in the City of Detroit. (0.03 miles approximately)
66. Commencing on the north side of the Edsel Ford Freeway (I-94) from the center of Berkshire easterly to a point on Harper (opposite freeway station 946 + 50) on the south side of the Edsel Ford Freeway (I-94) in the City of Detroit. (0.27 miles approximately)
67. Commencing on the north side of the Edsel Ford Freeway (I-94) from the center of Devonshire east to the center of Morang in the City of Detroit. (0.95 miles approximately)
68. Commencing on the south side of the Edsel Ford Freeway (I-94) from the center of Harvard east to the center of Cadieux in the City of Detroit. (0.05 miles approximately)
69. Commencing on the south side of the Edsel Ford Freeway (I-94) from a point on the center of Harper (opposite freeway station 990 + 50) northeasterly to the northeast city limits on the north side of the Edsel Ford Freeway (I-94) in the City of Detroit. (0.65 miles approximately)
70. Commencing on the north side of the Edsel Ford Freeway (I-94) from the intersection of Morang and the north service road southeasterly to the center of Harper in the City of Detroit. (0.08 miles approximately)

71. Commencing on the south side of the Edsel Ford Freeway (I-94) from the center of Harper (opposite freeway station 993 + 60) northeasterly to the northeast city limits in the City of Detroit. (0.30 miles approximately)

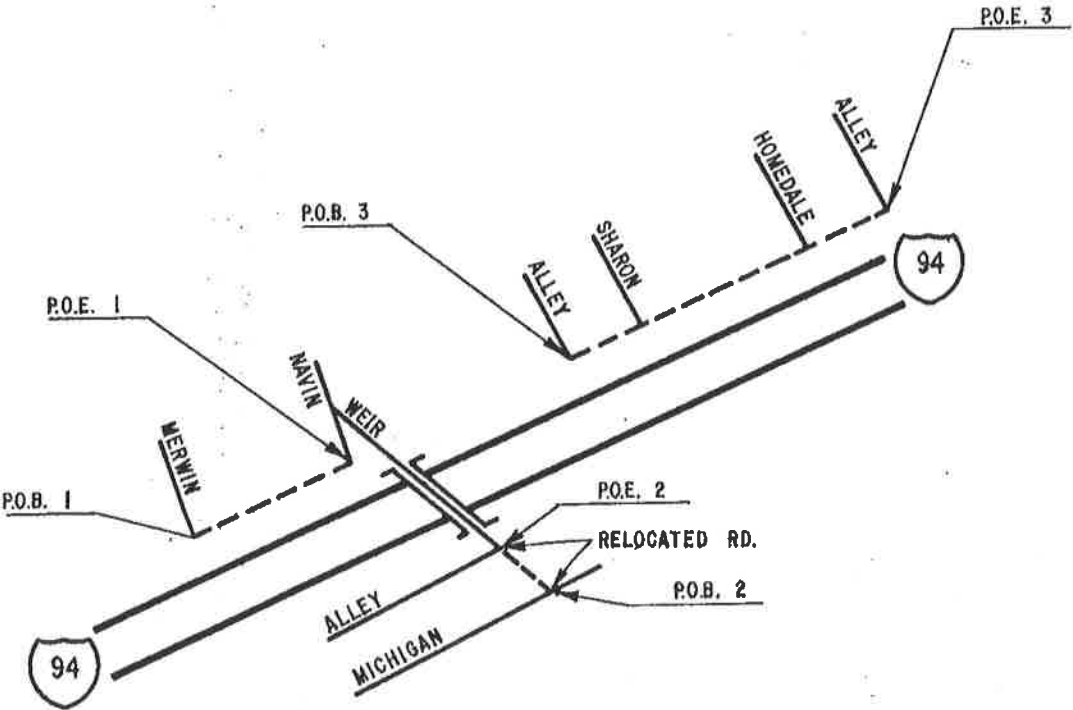
NOW, THEREFORE, in conformance with existing law, and in accordance with the agreements covering service roads, relocated roads and road closures, related to Edsel Ford Freeway (I-94), said roads are hereby transferred to the jurisdiction of the City of Detroit.

The effective date of transfer March 15, 1974.

  
John P. Woodford, Director  
Department of State Highways  
and Transportation

MICHIGAN  
DEPARTMENT OF STATE  
HIGHWAYS AND TRANSPORTATION

# TRANSFER OF RELOCATED AND SERVICE ROADS ADJACENT TO EDSEL FORD FREEWAY (I-94) IN CITY OF DETROIT



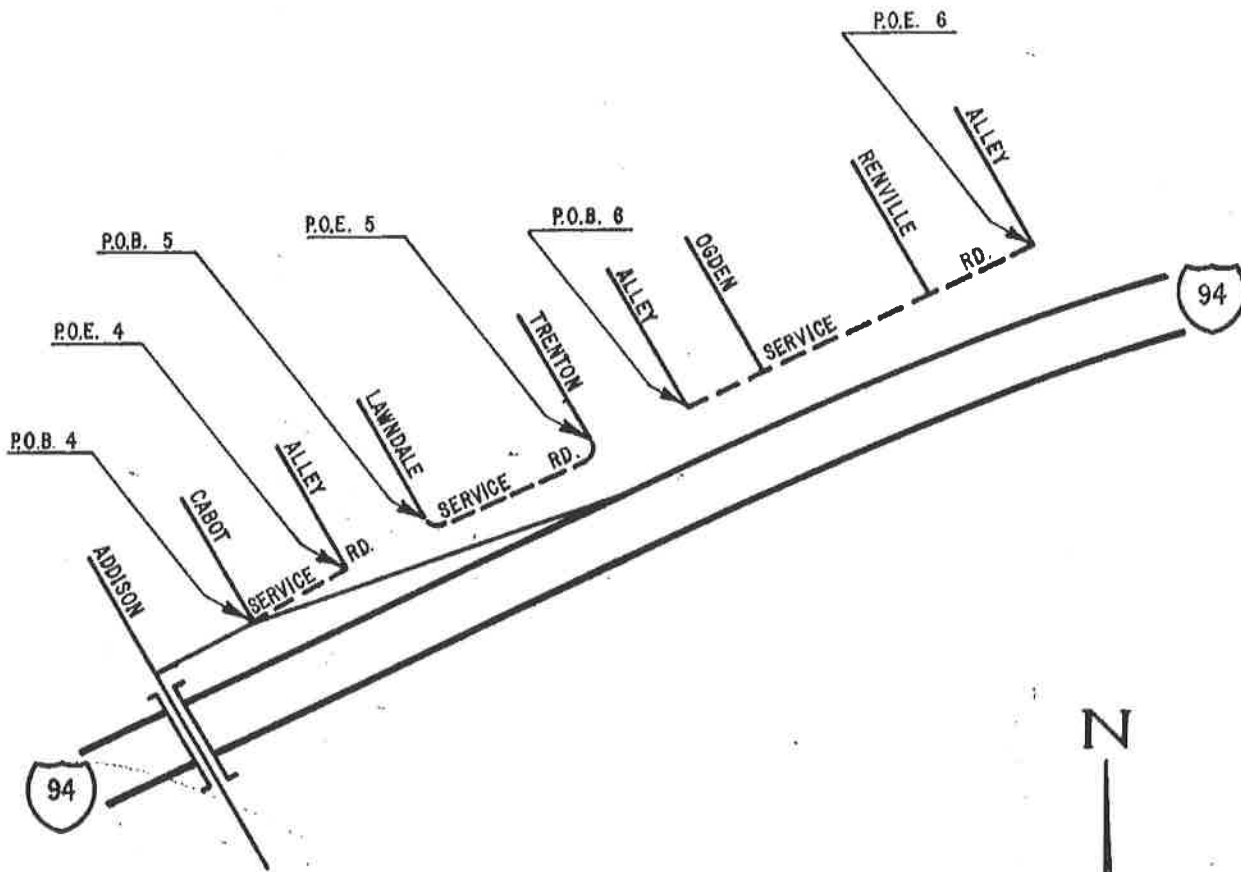
The transfer shall be effective  
March 15, 1974

*John P. Woodford*  
John P. Woodford, Director  
Department of State Highways  
and Transportation



MICHIGAN  
DEPARTMENT OF STATE  
HIGHWAYS AND TRANSPORTATION

TRANSFER OF SERVICE ROADS ADJACENT TO  
EASEL FORD FREEWAY (I-94) IN CITY OF DETROIT

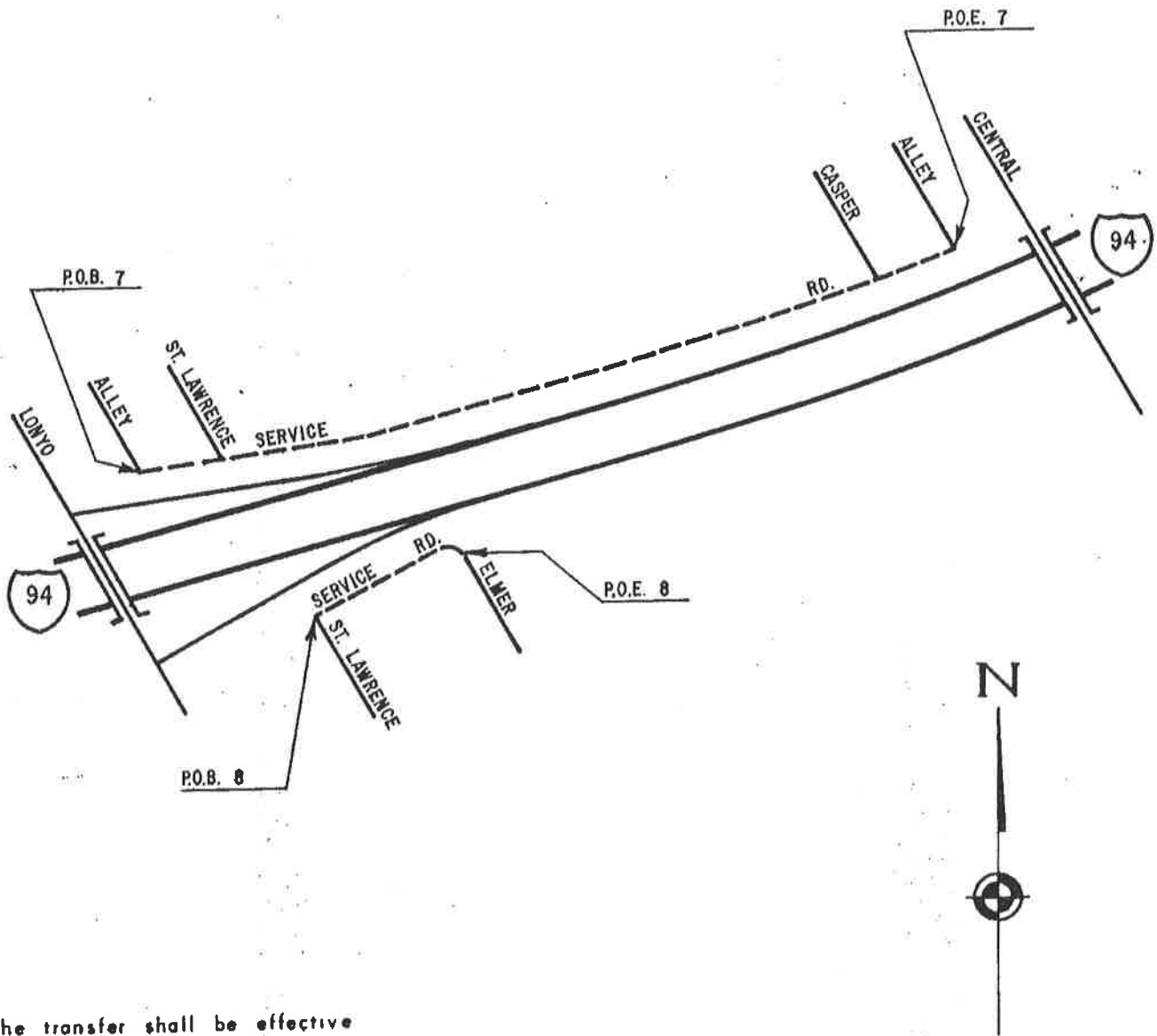


The transfer shall be effective  
March 15, 1974.

*John P. Woodford*  
John P. Woodford, Director  
Department of State Highways  
and Transportation

MICHIGAN  
DEPARTMENT OF STATE  
HIGHWAYS AND TRANSPORTATION

TRANSFER OF SERVICE ROADS ADJACENT TO  
EISEL FORD FREEWAY (I-94) IN CITY OF DETROIT

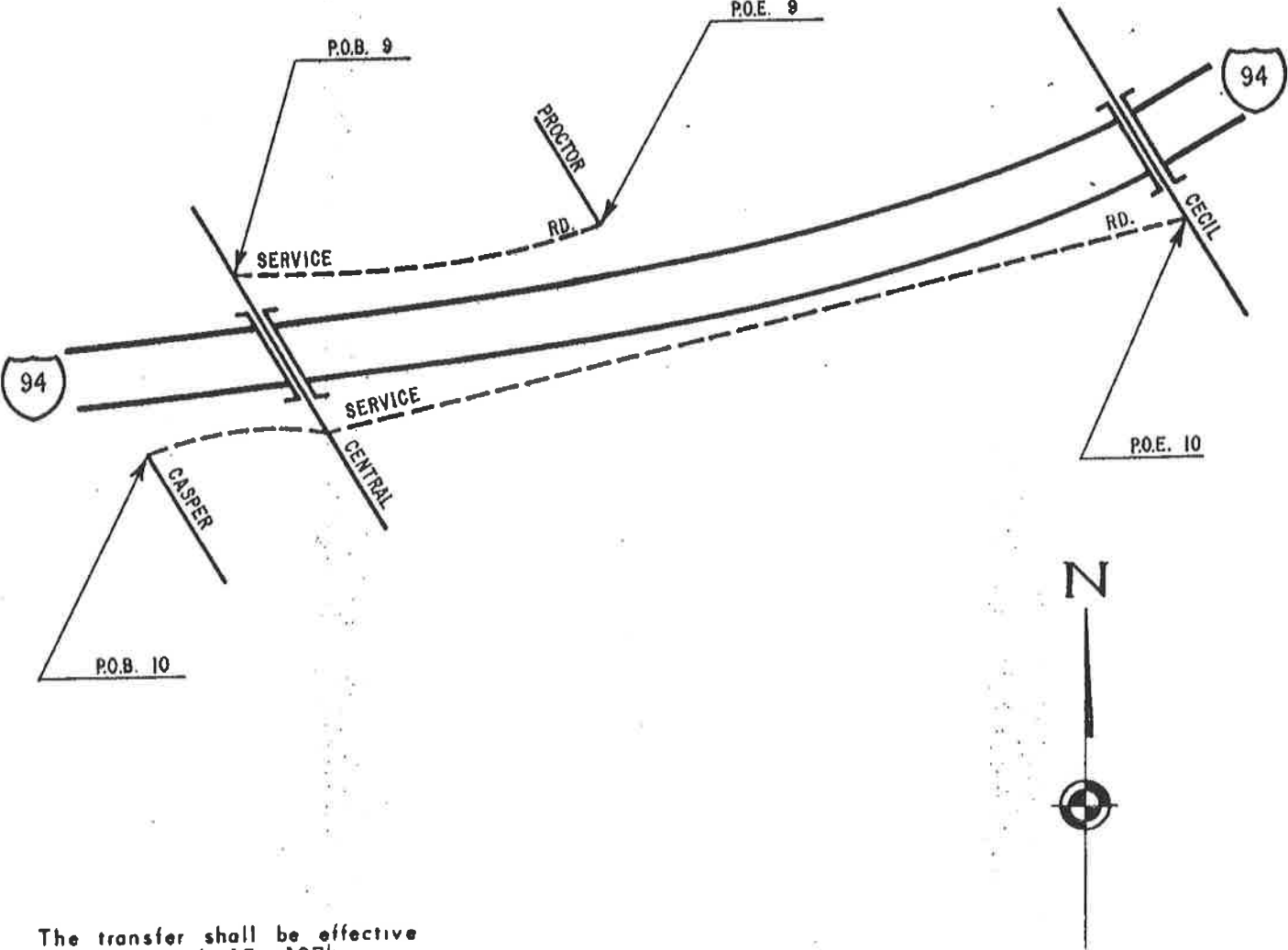


The transfer shall be effective  
March 15, 1974

*John P. Woodford*  
John P. Woodford, Director  
Department of State Highways  
and Transportation

MICHIGAN  
DEPARTMENT OF STATE  
HIGHWAYS AND TRANSPORTATION

TRANSFER OF SERVICE ROADS ADJACENT TO  
EASEL FORD FREEWAY (I-94) IN CITY OF DETROIT

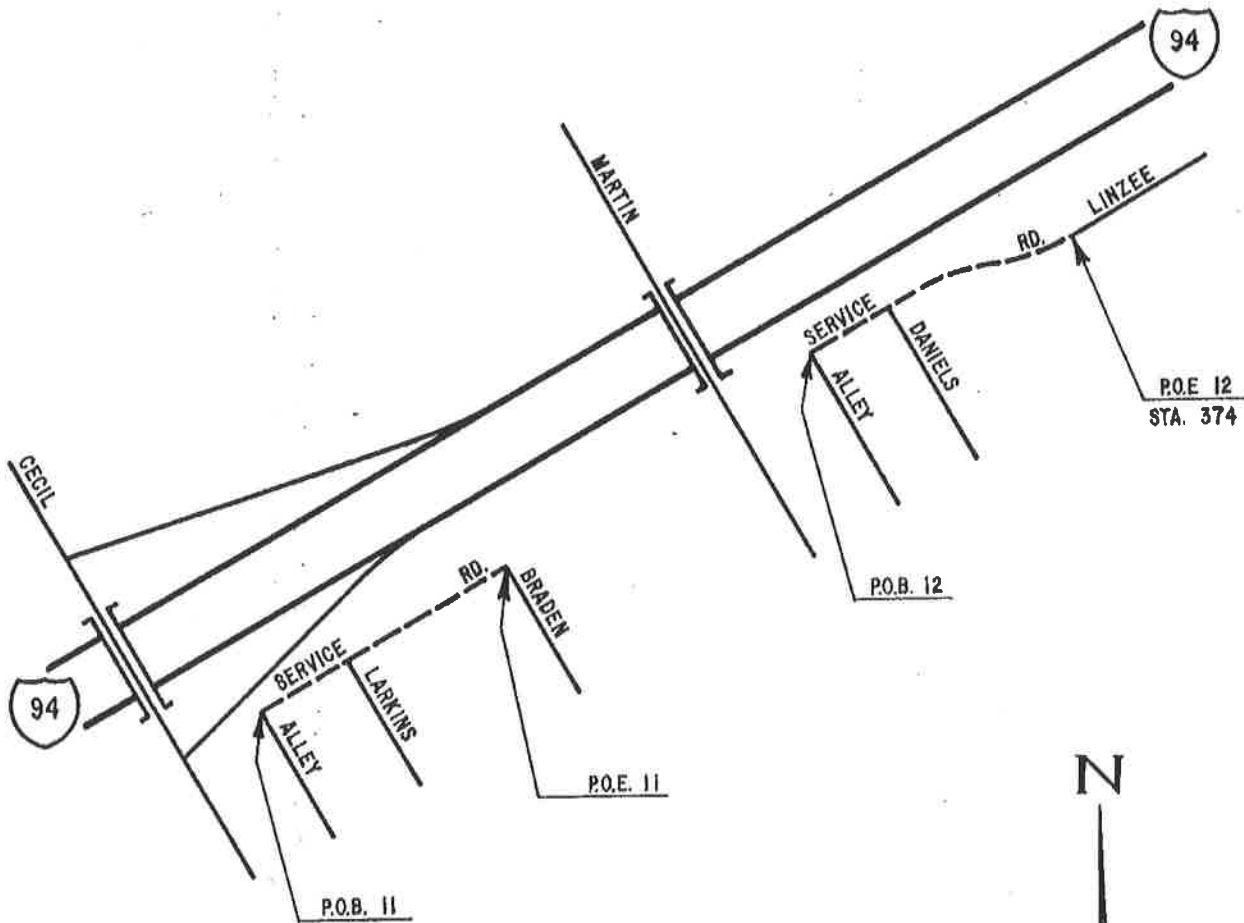


The transfer shall be effective  
March 15, 1974.

*John P. Woodford*  
John P. Woodford, Director  
Department of State Highways  
and Transportation

MICHIGAN  
DEPARTMENT OF STATE  
HIGHWAYS AND TRANSPORTATION

TRANSFER OF SERVICE ROADS ADJACENT TO  
EASEL FORD FREEWAY (I-94) IN CITY OF DETROIT

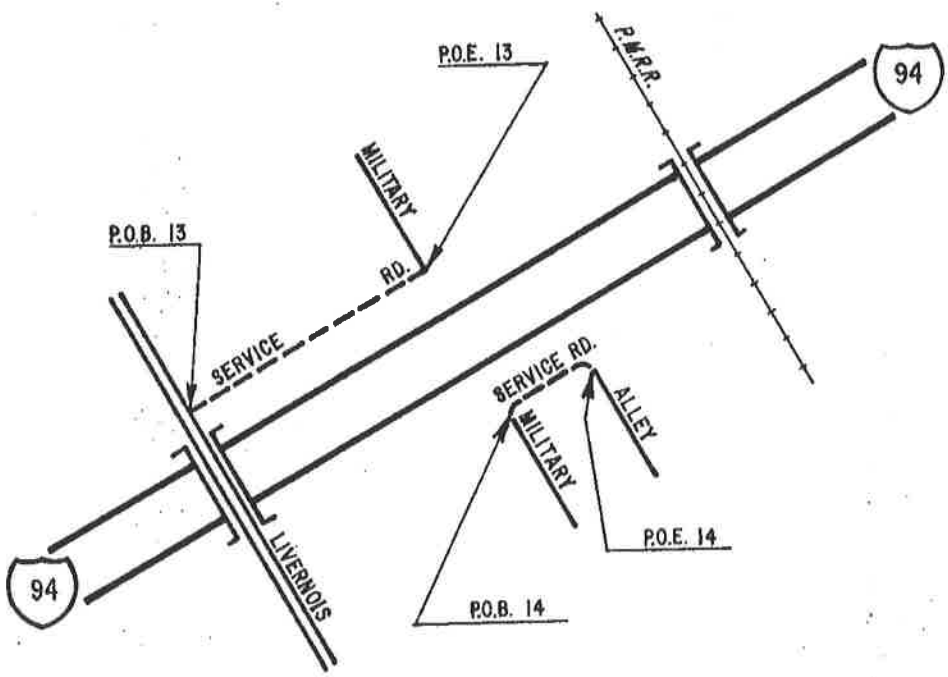


The transfer shall be effective  
March 15, 1974

*John P. Woodford*  
John P. Woodford, Director  
Department of State Highways  
and Transportation

MICHIGAN  
DEPARTMENT OF STATE  
HIGHWAYS AND TRANSPORTATION

TRANSFER OF SERVICE ROADS ADJACENT TO  
EASEL FORD FREEWAY (I-94) IN CITY OF DETROIT

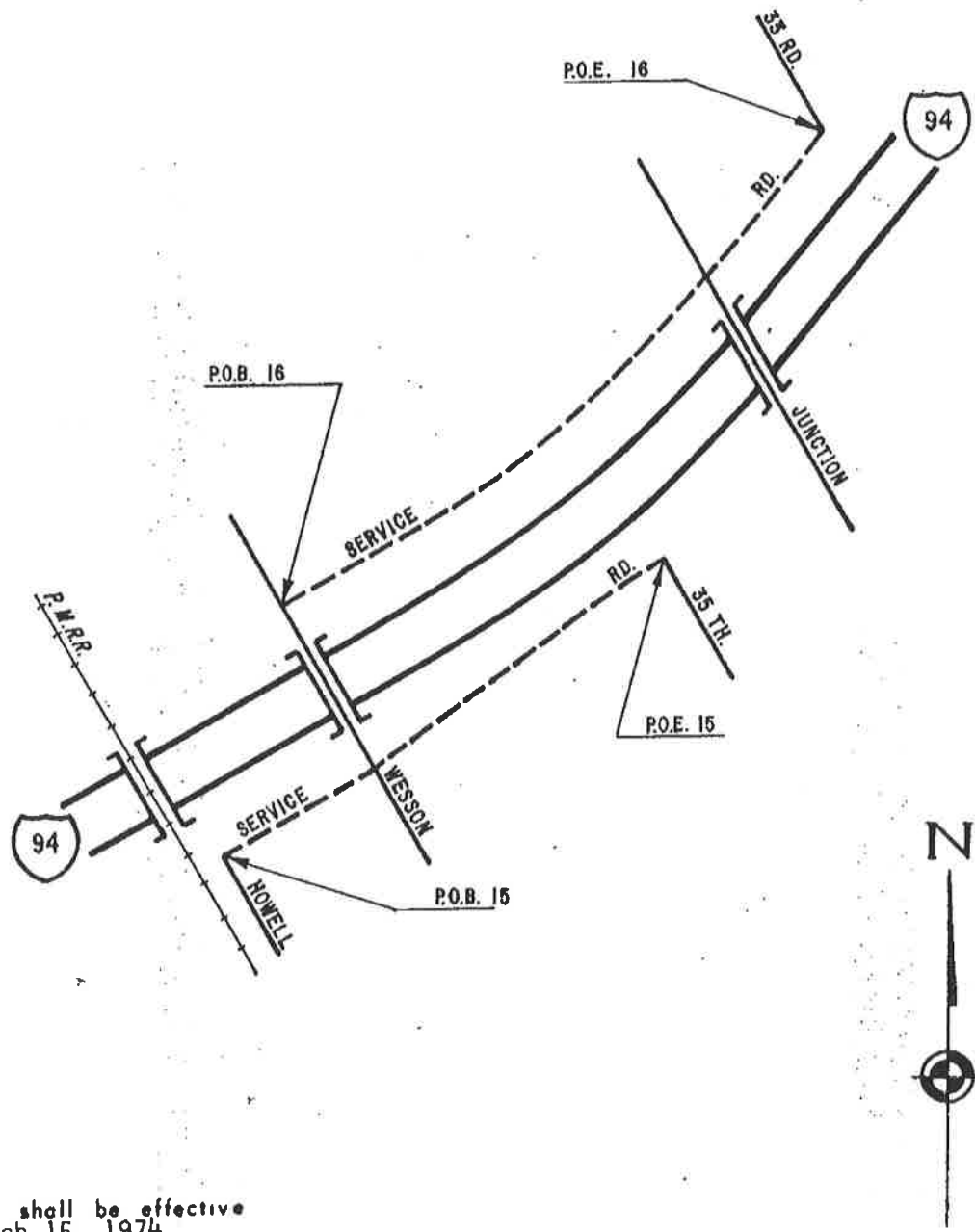


The transfer shall be effective  
March 15, 1974

*John P. Woodford*  
John P. Woodford, Director  
Department of State Highways  
and Transportation

MICHIGAN  
DEPARTMENT OF STATE  
HIGHWAYS AND TRANSPORTATION

TRANSFER OF SERVICE ROADS ADJACENT TO  
EASEL FORD FREEWAY (I-94) IN CITY OF DETROIT

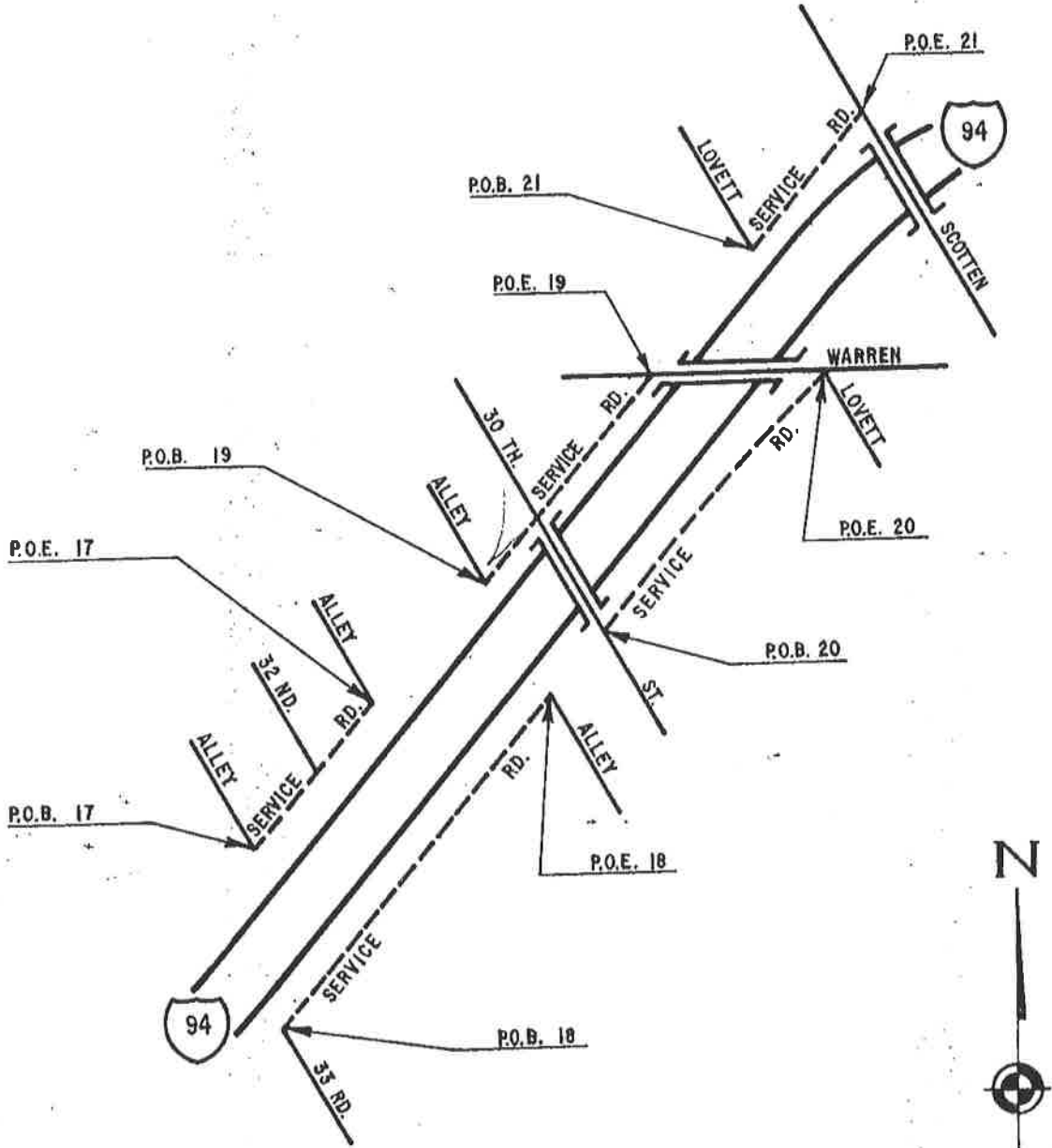


The transfer shall be effective  
March 15, 1974

*John P. Woodford*  
John P. Woodford, Director  
Department of State Highways  
and Transportation

MICHIGAN  
DEPARTMENT OF STATE  
HIGHWAYS AND TRANSPORTATION

TRANSFER OF SERVICE ROADS ADJACENT TO  
EASEL FORD FREEWAY (I-94) IN CITY OF DETROIT

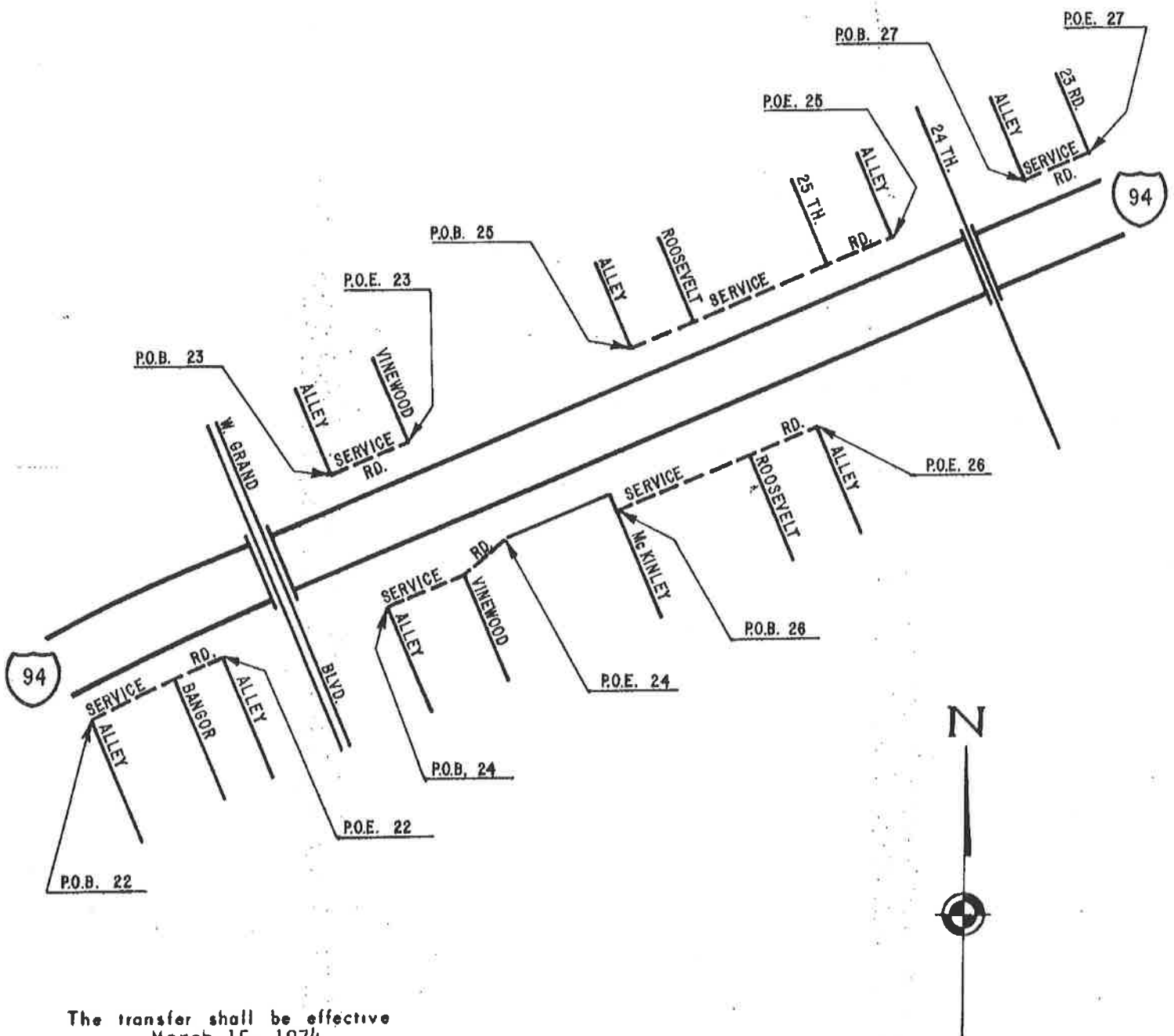


The transfer shall be effective  
March 15, 1974

*John P. Woodford*  
John P. Woodford, Director  
Department of State Highways  
and Transportation

MICHIGAN  
DEPARTMENT OF STATE  
HIGHWAYS AND TRANSPORTATION

TRANSFER OF SERVICE ROADS ADJACENT TO  
EASEL FORD FREEWAY (I-94) IN CITY OF DETROIT



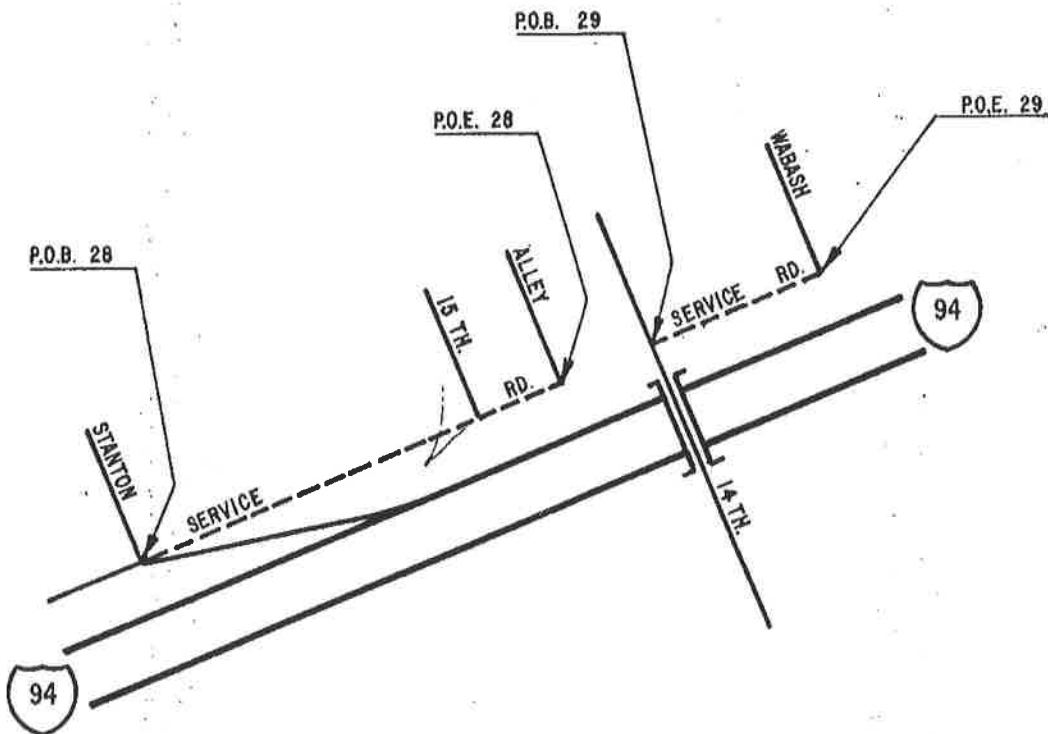
The transfer shall be effective  
March 15, 1974

*John P. Woodford*  
John P. Woodford, Director  
Department of State Highways  
and Transportation



MICHIGAN  
DEPARTMENT OF STATE  
HIGHWAYS AND TRANSPORTATION

TRANSFER OF SERVICE ROADS ADJACENT TO  
EISEL FORD FREEWAY (I-94) IN CITY OF DETROIT

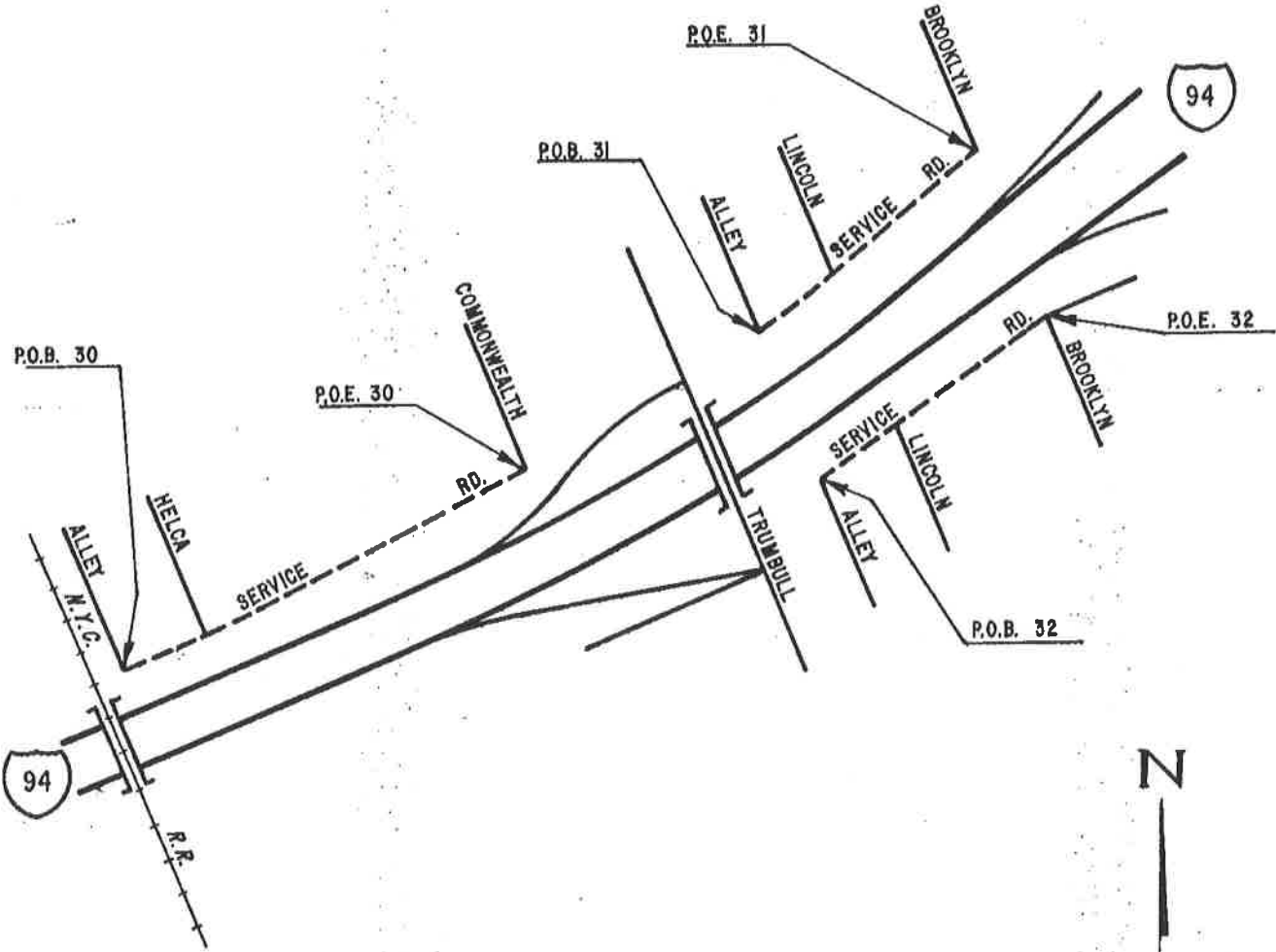


The transfer shall be effective  
March 15, 1974.

*John P. Woodford*  
John P. Woodford, Director  
Department of State Highways  
and Transportation

MICHIGAN  
DEPARTMENT OF STATE  
HIGHWAYS AND TRANSPORTATION

TRANSFER OF SERVICE ROADS ADJACENT TO  
EDEL FORD FREEWAY (I-94) IN CITY OF DETROIT

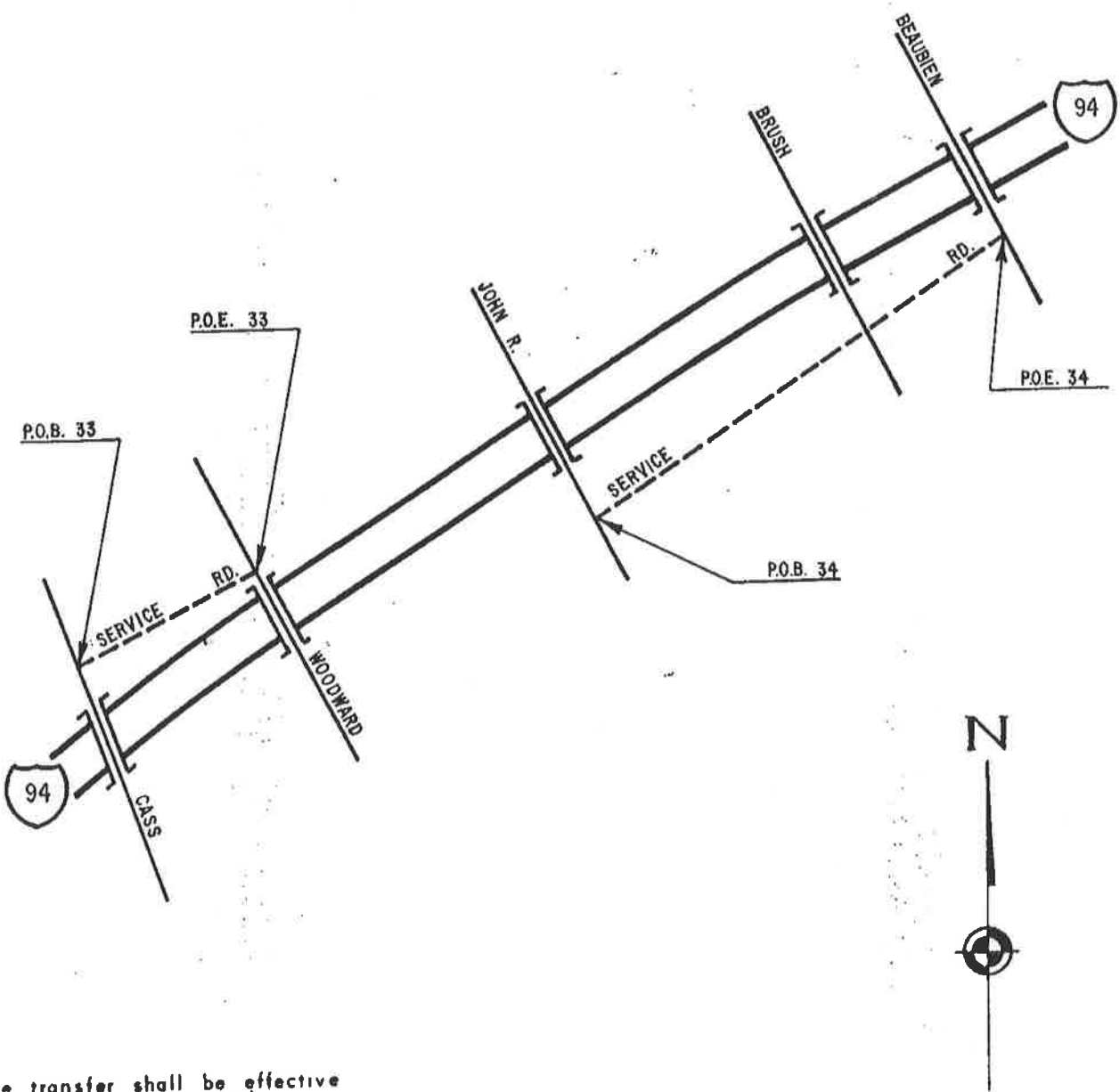


The transfer shall be effective  
March 15, 1974

*John P. Woodford*  
John P. Woodford, Director  
Department of State Highways  
and Transportation

MICHIGAN  
DEPARTMENT OF STATE  
HIGHWAYS AND TRANSPORTATION

TRANSFER OF SERVICE ROADS ADJACENT TO  
EISEL FORD FREEWAY (I-94) IN CITY OF DETROIT

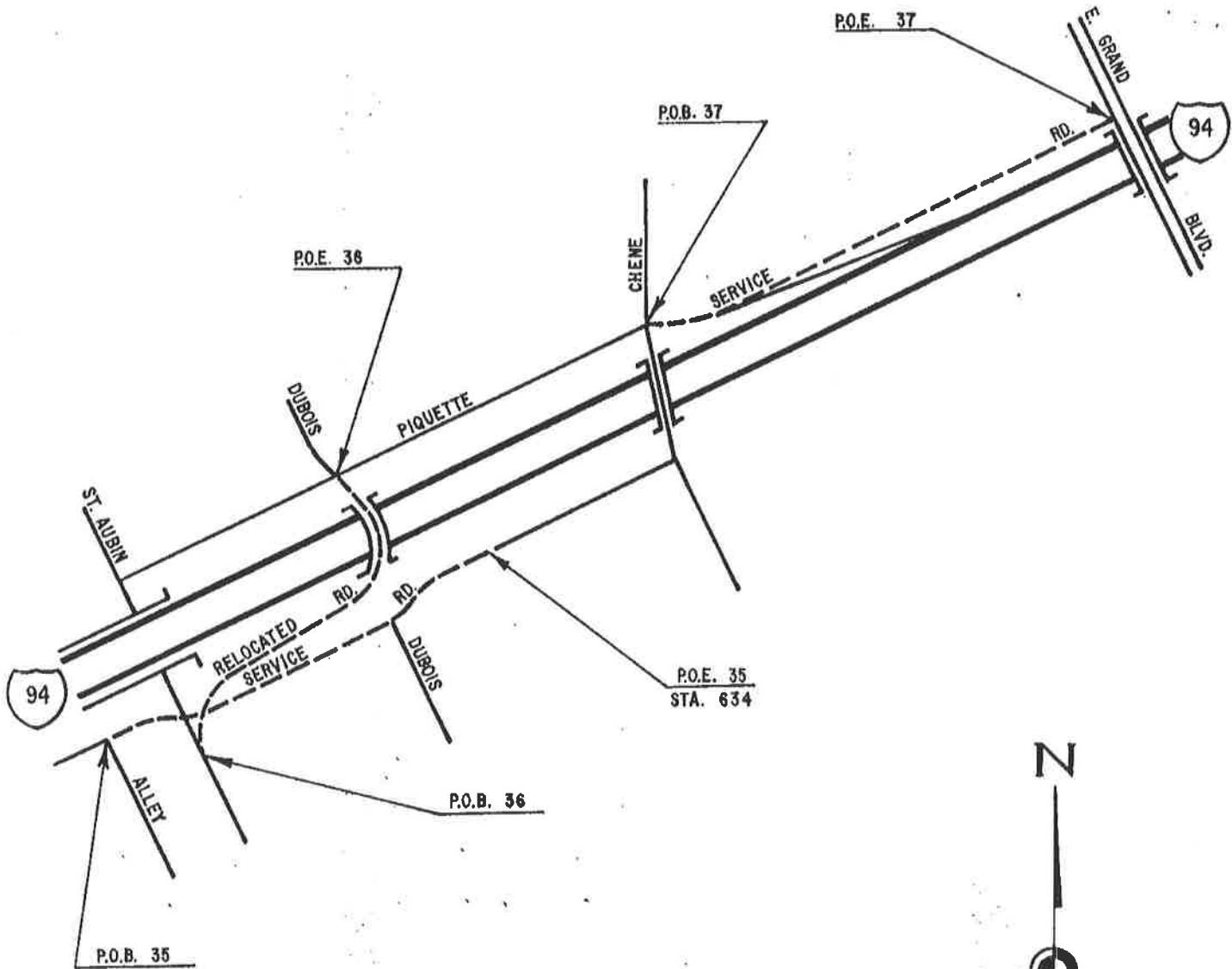


The transfer shall be effective  
March 15, 1974

*John P. Woodford*  
John P. Woodford, Director  
Department of State Highways  
and Transportation

MICHIGAN  
DEPARTMENT OF STATE  
HIGHWAYS AND TRANSPORTATION

TRANSFER OF RELOCATED AND SERVICE ROADS ADJACENT TO  
EISEL FORD FREEWAY (I-94) IN CITY OF DETROIT

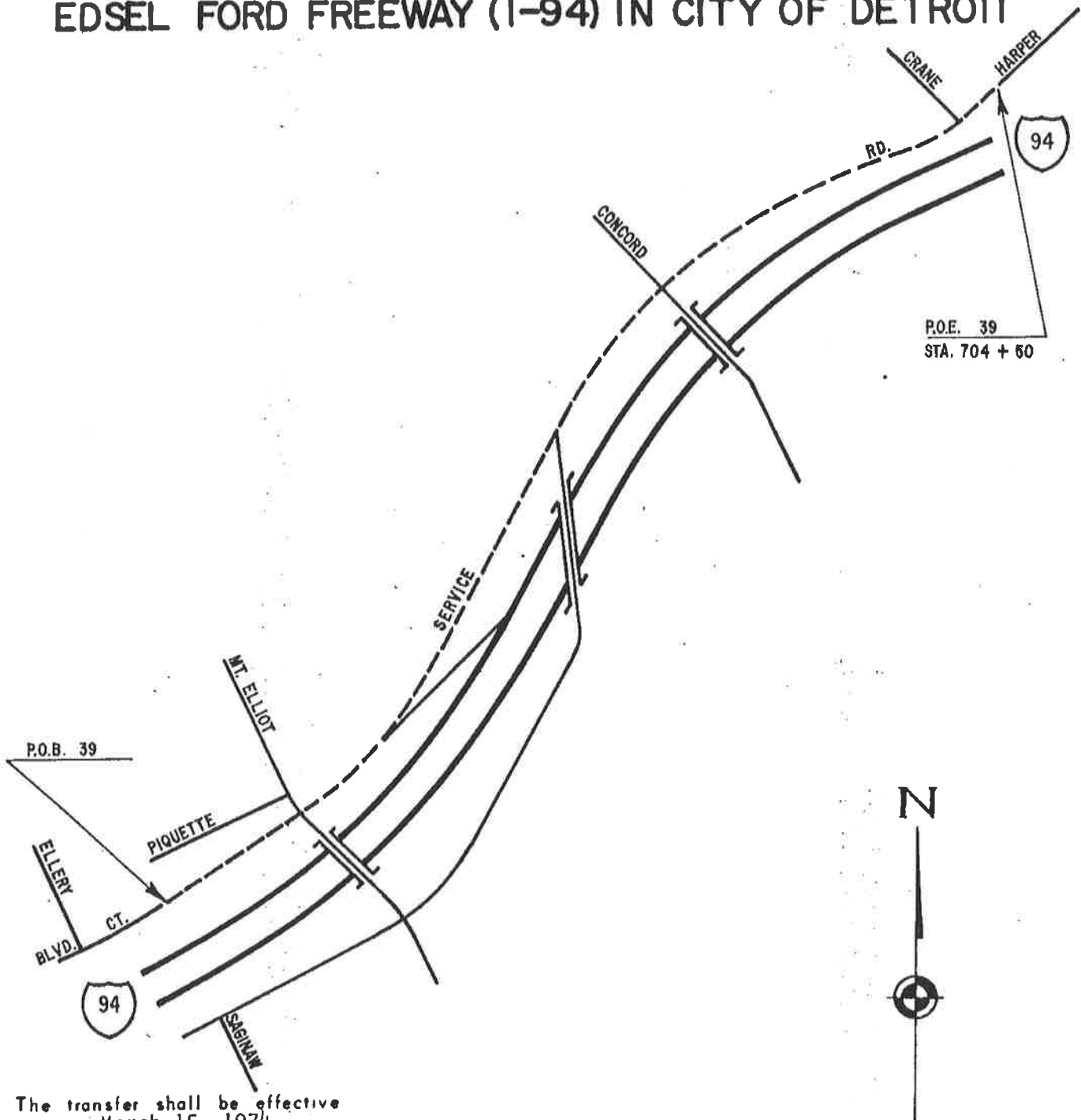


The transfer shall be effective  
March 15, 1974

*John P. Woodford*  
John P. Woodford, Director  
Department of State Highways  
and Transportation

MICHIGAN  
DEPARTMENT OF STATE  
HIGHWAYS AND TRANSPORTATION

TRANSFER OF SERVICE ROAD ADJACENT TO  
EISEL FORD FREEWAY (I-94) IN CITY OF DETROIT

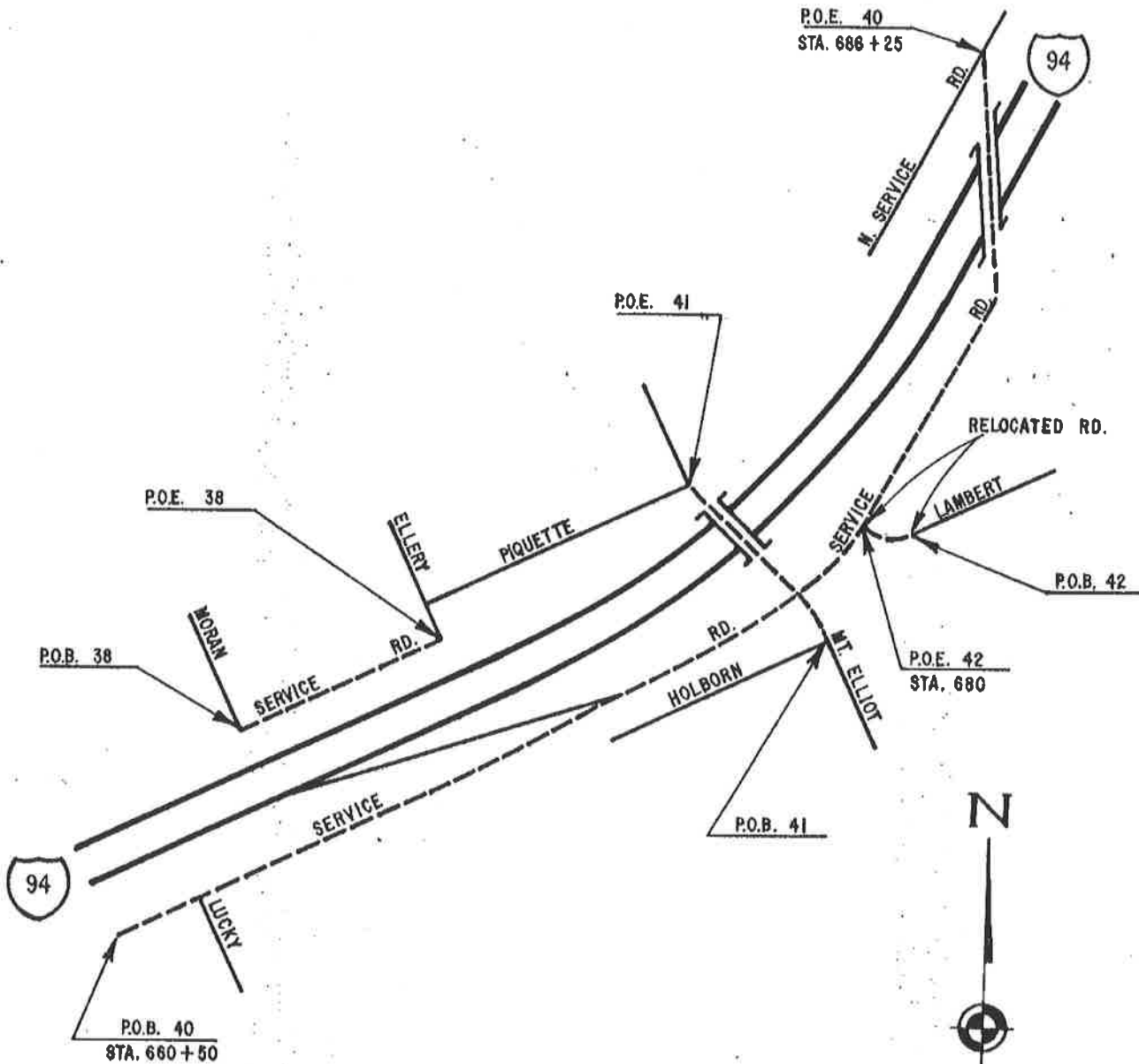


The transfer shall be effective  
March 15, 1974

*John P. Woodford*  
John P. Woodford, Director  
Department of State Highways  
And Transportation

MICHIGAN  
DEPARTMENT OF STATE  
HIGHWAYS AND TRANSPORTATION

TRANSFER OF RELOCATED AND SERVICE ROADS ADJACENT TO  
EISEL FORD FREEWAY (I-94) IN CITY OF DETROIT

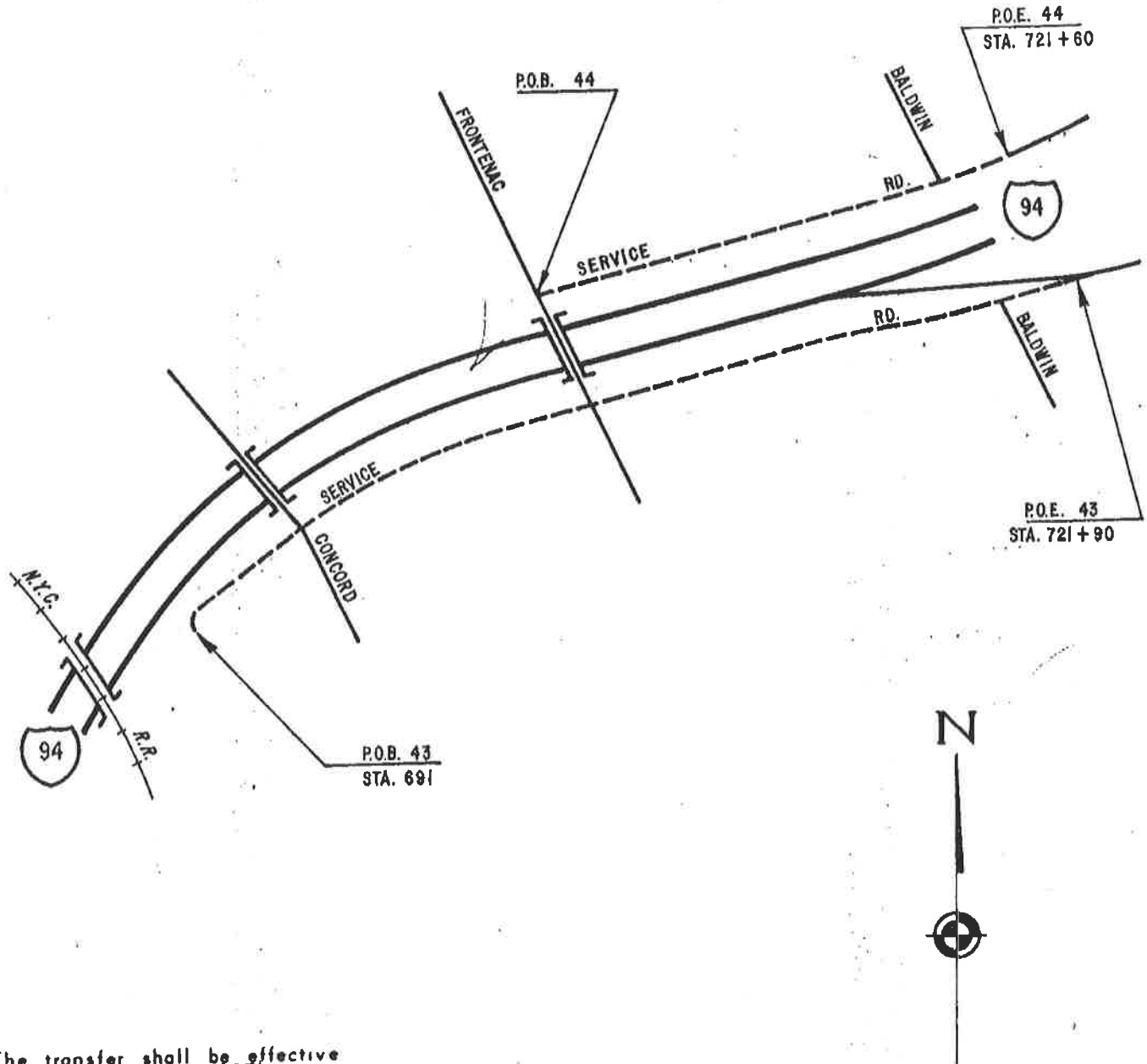


The transfer shall be effective  
March 15, 1974.

*John P. Woodford*  
John P. Woodford, Director  
Department of State Highways  
and Transportation

MICHIGAN  
DEPARTMENT OF STATE  
HIGHWAYS AND TRANSPORTATION

TRANSFER OF SERVICE ROADS ADJACENT TO  
EASEL FORD FREEWAY (I-94) IN CITY OF DETROIT

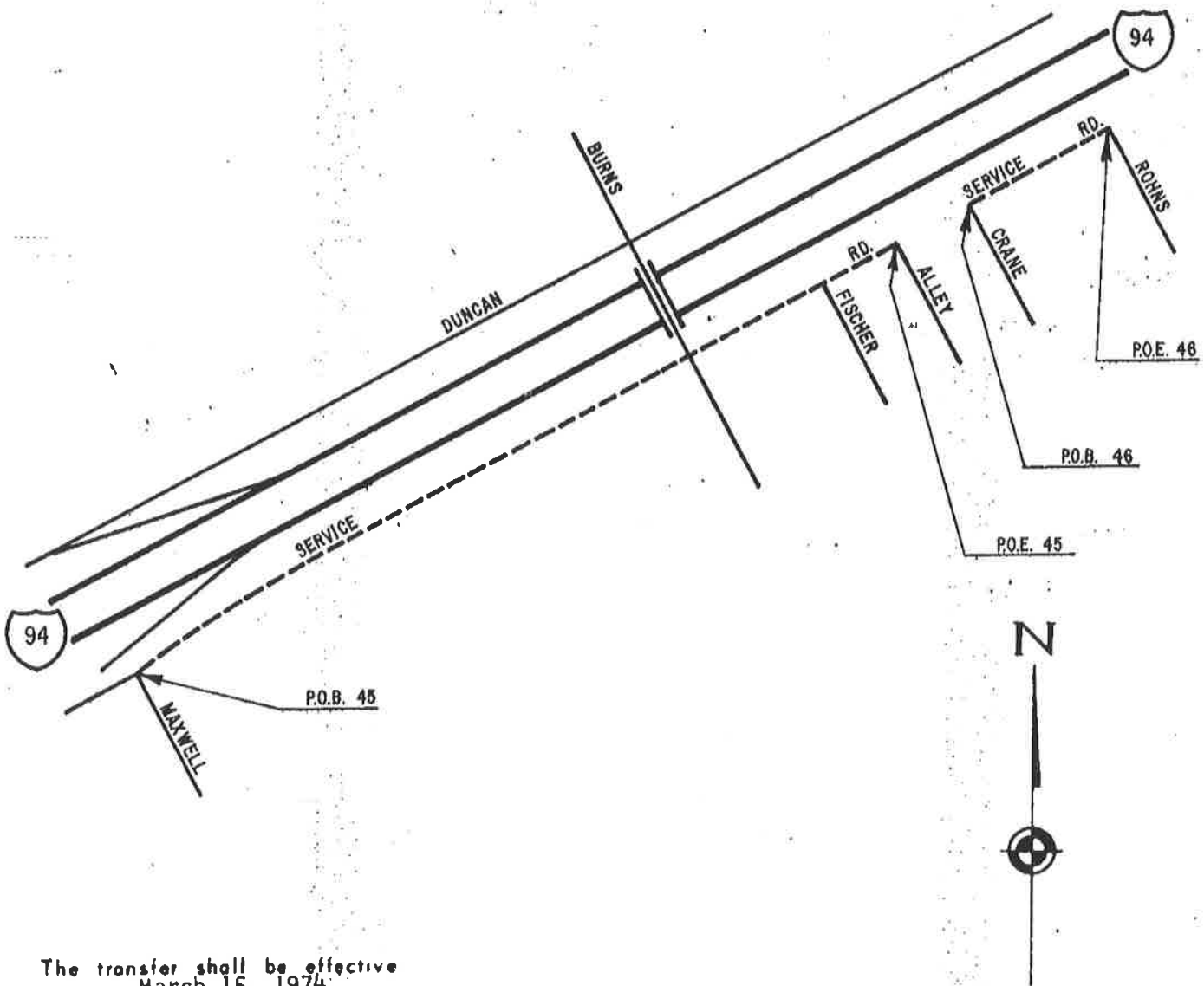


The transfer shall be effective  
March 15, 1974

*John P. Woodford*  
John P. Woodford, Director  
Department of State Highways  
and Transportation

MICHIGAN  
DEPARTMENT OF STATE  
HIGHWAYS AND TRANSPORTATION

TRANSFER OF SERVICE ROADS ADJACENT TO  
EISEL FORD FREEWAY (I-94) IN CITY OF DETROIT



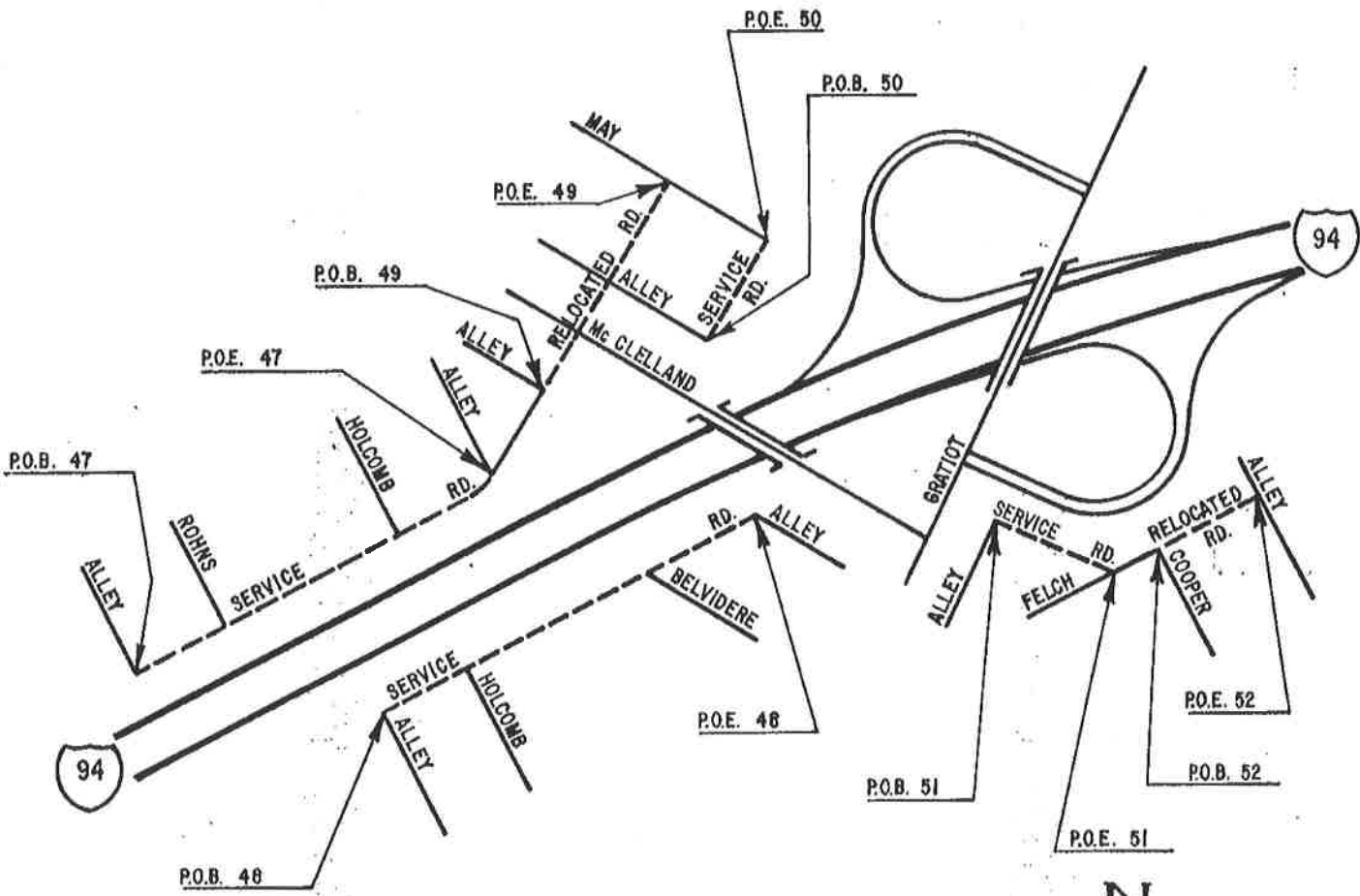
The transfer shall be effective  
March 15, 1974

*John P. Woodford*  
John P. Woodford, Director  
Department of State Highways  
and Transportation



MICHIGAN  
DEPARTMENT OF STATE  
HIGHWAYS AND TRANSPORTATION

## TRANSFER OF RELOCATED AND SERVICE ROADS ADJACENT TO EISEL FORD FREEWAY (I-94) IN CITY OF DETROIT

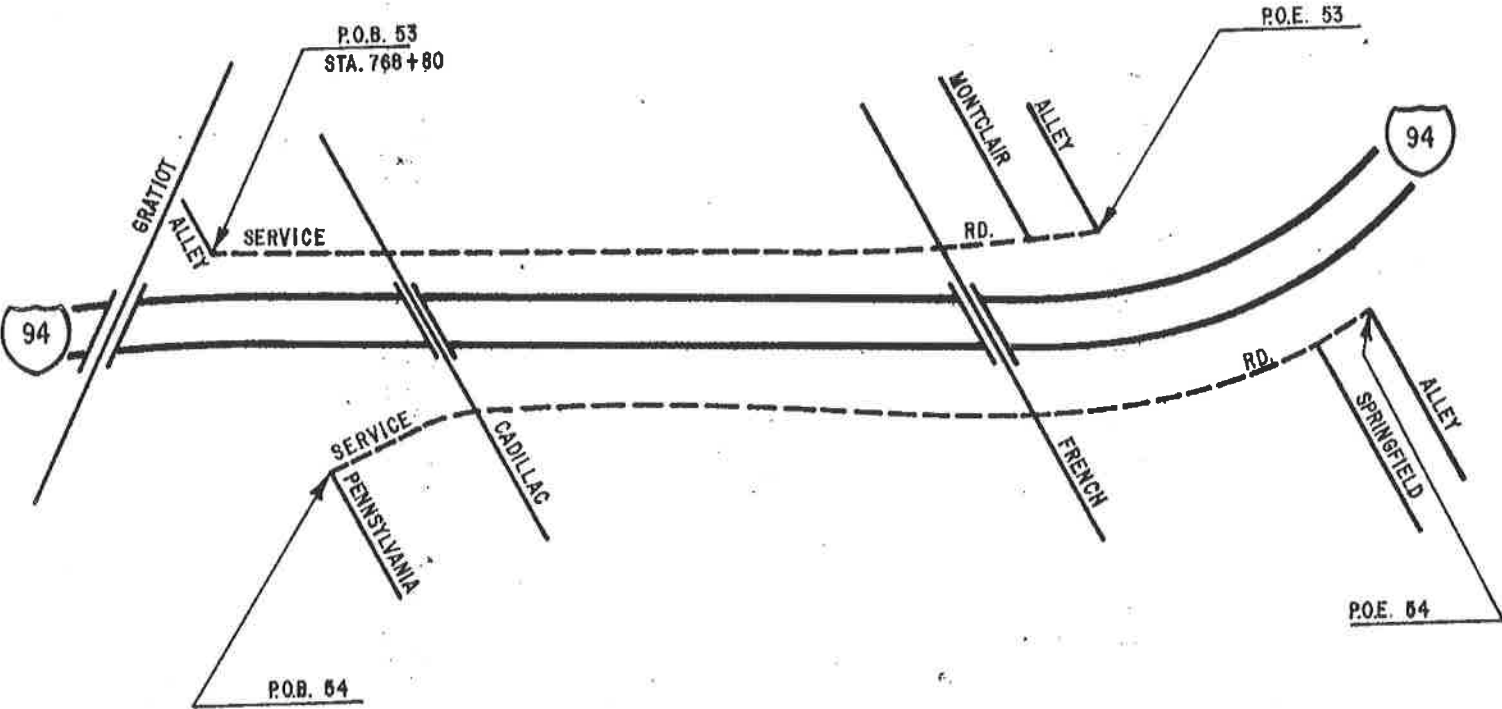


The transfer shall be effective  
March 15, 1974

*John P. Woodford*  
John P. Woodford, Director  
Department of State Highways  
and Transportation.

MICHIGAN  
DEPARTMENT OF STATE  
HIGHWAYS AND TRANSPORTATION

TRANSFER OF SERVICE ROADS ADJACENT TO  
EISEL FORD FREEWAY (I-94) IN CITY OF DETROIT

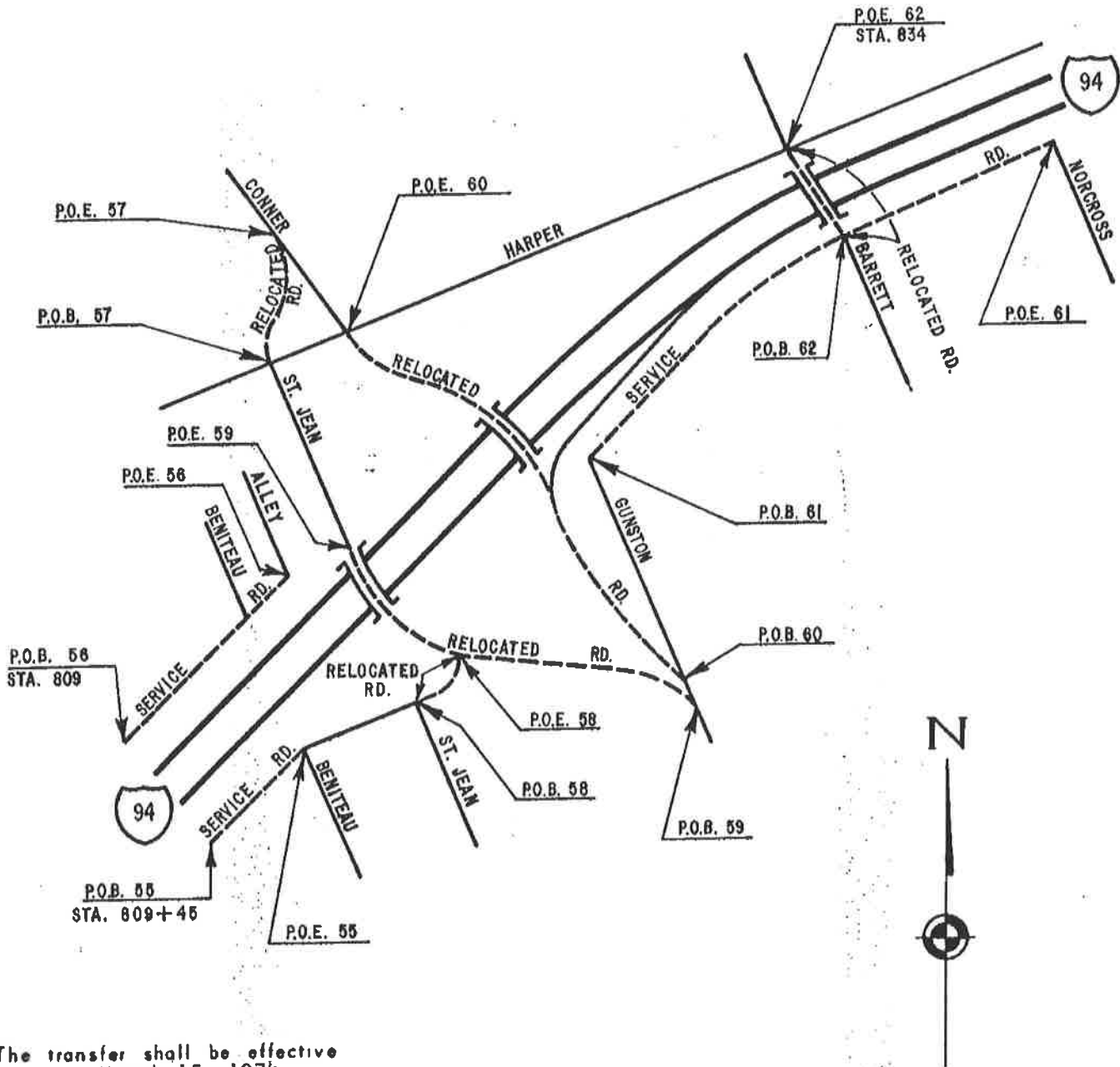


The transfer shall be effective  
March 15, 1974

*John P. Woodford*  
John P. Woodford, Director  
Department of State Highways  
and Transportation

MICHIGAN  
DEPARTMENT OF STATE  
HIGHWAYS AND TRANSPORTATION

# TRANSFER OF RELOCATED AND SERVICE ROADS ADJACENT TO EISENHOWER FREEWAY (I-94) IN CITY OF DETROIT



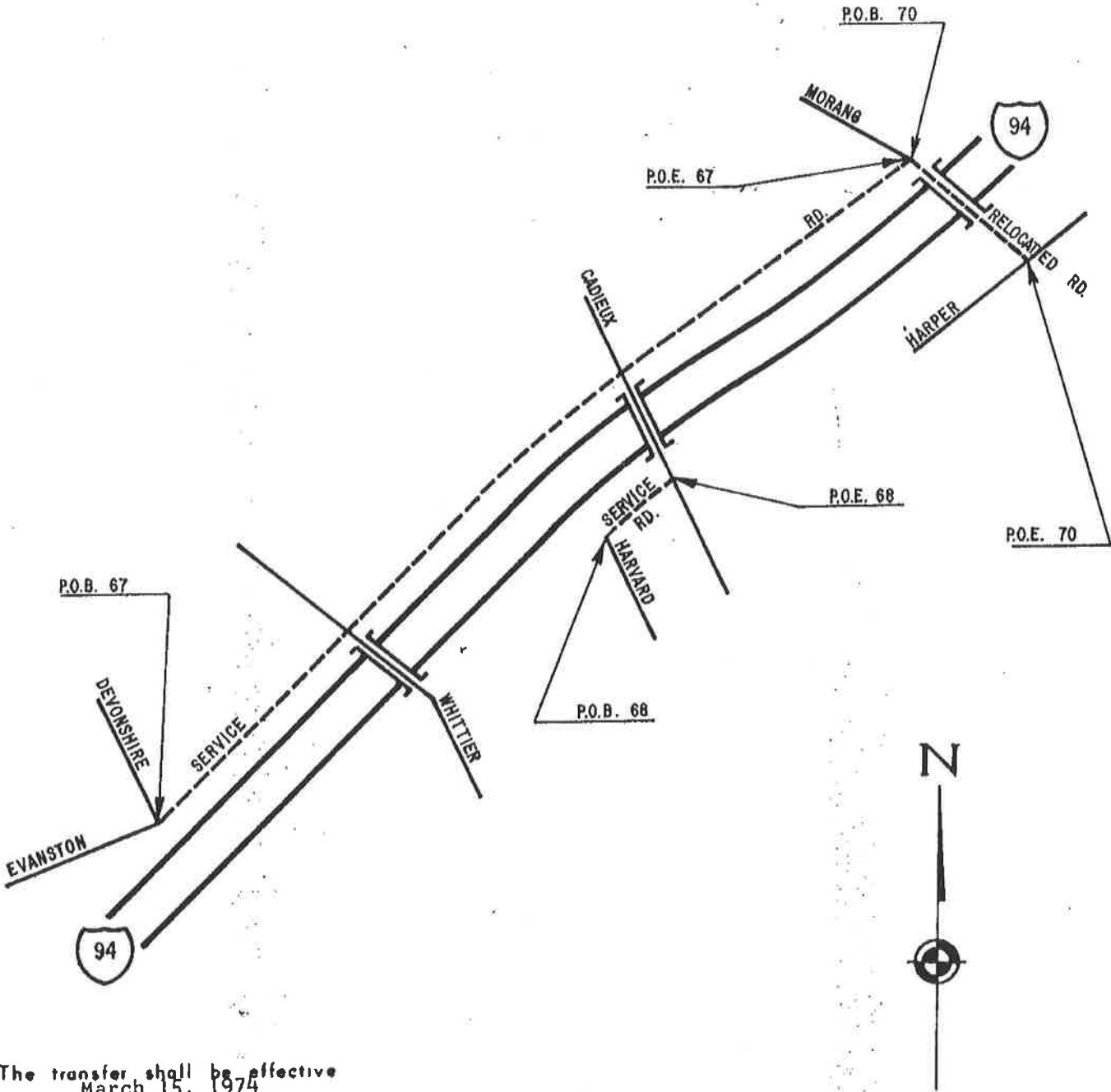
The transfer shall be effective  
March 15, 1974.

*John P. Woodford*  
John P. Woodford, Director  
Department of State Highways  
and Transportation.



MICHIGAN  
DEPARTMENT OF STATE  
HIGHWAYS AND TRANSPORTATION

TRANSFER OF RELOCATED AND SERVICE ROADS ADJACENT TO  
EDEL FORD FREEWAY (I-94) IN CITY OF DETROIT

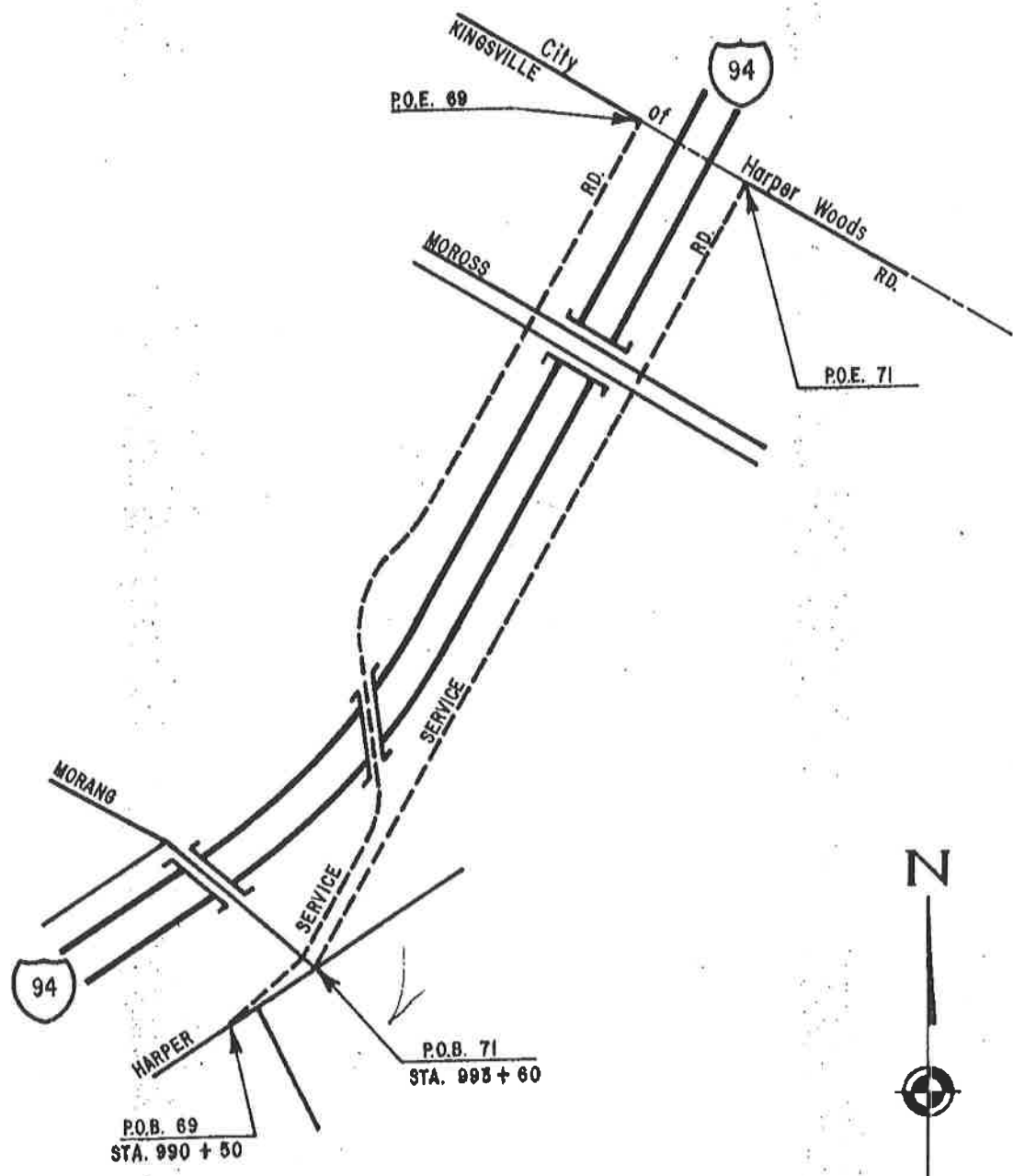


The transfer shall be effective  
March 15, 1974

*John P. Woodford*  
John P. Woodford, Director  
Department of State Highways  
and Transportation

MICHIGAN  
DEPARTMENT OF STATE  
HIGHWAYS AND TRANSPORTATION

TRANSFER OF SERVICE ROADS ADJACENT TO  
EISEL FORD FREEWAY (I-94) IN CITY OF DETROIT



The transfer shall be effective  
March 15, 1974.

*John P. Woodford*  
John P. Woodford, Director  
Department of State Highways  
and Transportation