



CITY OF DETROIT
DEPARTMENT OF PUBLIC WORKS
ADMINISTRATION DIVISION

COLEMAN A. YOUNG MUNICIPAL CENTER
2 WOODWARD AVENUE, SUITE 513
DETROIT, MICHIGAN 48226
PHONE: 313-224-3901 TTY: 311
FAX: 313-224-1464
WWW.DETROITMI.GOV

TO: Noel Perry, Supervisor of Survey, Maps and Record-CED/DPW
From: Nancy Capers, DPW, Central Accounting
Date: February 2, 2009
RE: ACT 51, PA OF 1951, AS AMENDED
ANNUAL REPORT-2008
CERTIFICATION OF MAJOR AND LOCAL STREETS
UNDER THE JURISDICTION OF THE CITY OF DETROIT

You are hereby requested to provide us with the following information as soon as possible to expedite the preparation of the ACT 51 Annual Report.

- 1 A list of new Street opening and/or dedications during 2008, if any.
- 2 A list of Streets which have been vacated during 2008 if any.
- 3 A list of Street Name change during 2008 if any.

Your prompt response will be much appreciated. If you have any questions, please contact Shashi Beri at 224-3409.

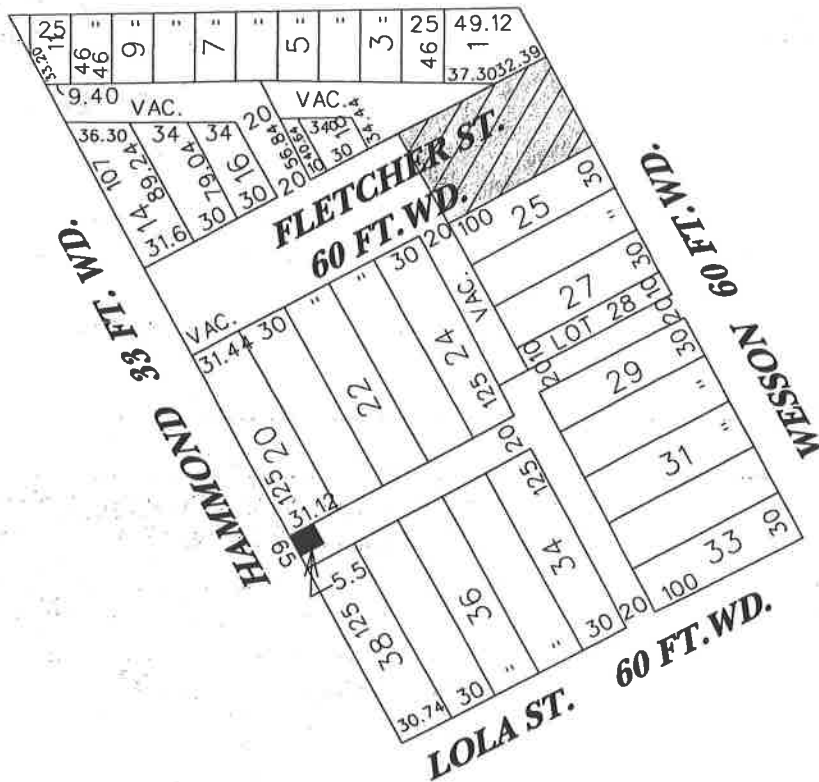
XC: Jessy Jacob, City Engineer

*delivered
1/25/09*

PETITION NO. 2120
GIGANTE PRINCE VALLEY SUPERMERCADO
5931 MICHIGAN AVE.
DETROIT, MI 48210
c/o JOE GAPPY
PHONE NO. 313-898-9717



MICHIGAN AVE. 120 FT. WD.



 **-AREA OF ENCROACHMENT**
 (65 x 5.5 CONCRET PAD TRANSFORMER)

 **-REQUEST CONVERSION TO EASEMENT**

FLETCHER - 130'

(FOR OFFICE USE ONLY)

CARTO 13 E

B					
A					
DESCRIPTION	DRWN	CHKD	APPD	DATE	
REVISIONS					
DRAWN BY	CHECKED				
<i>ahb</i>					
DATE	APPROVED				
<i>10/15/07</i>					

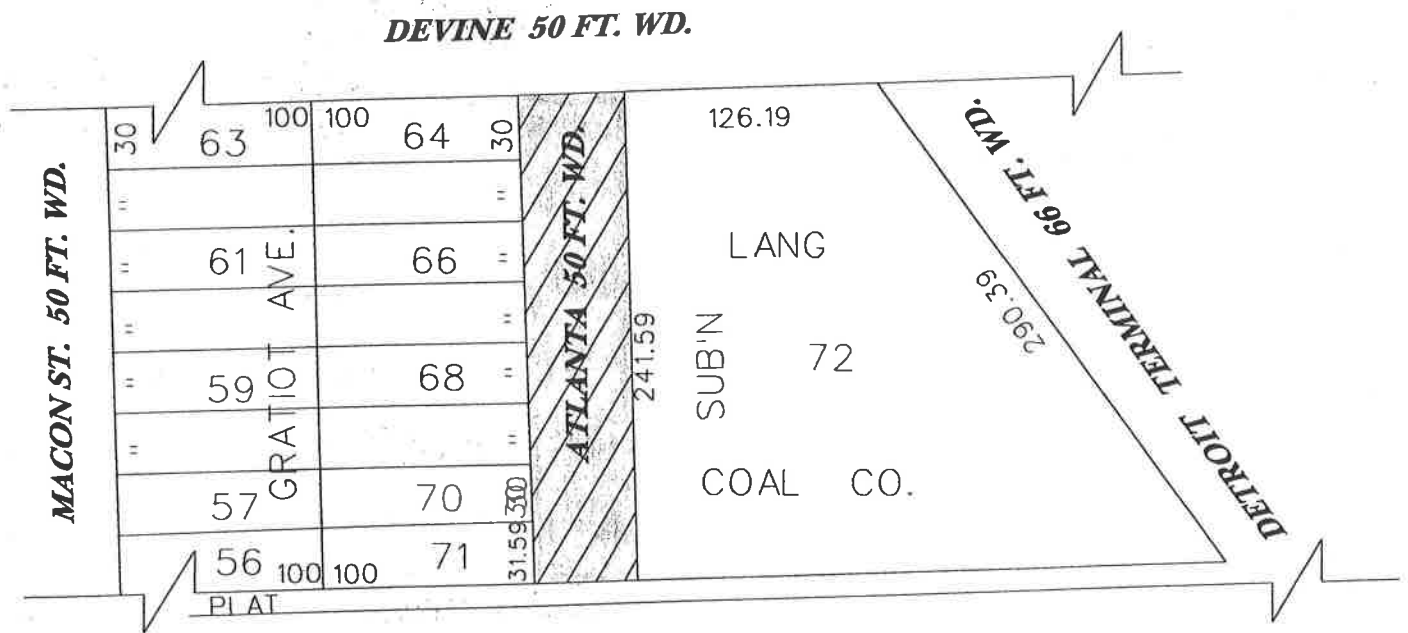
REQUESTED CONVERSION TO EASEMENT THE REMAINING PORTION OF FLETCHER 60 FT. WD. AND A ENCROACHMENT OF A CONCRET PAD WITH A TRANS FORMER IN THE BLK. BND. BY HAMMOND, WESSON, LOLA AND MICHIGAN.

CITY OF DETROIT
CITY ENGINEERING DEPARTMENT
SURVEY BUREAU

JOB NO. 01-01

DRWG. NO. x2120.dgn

PETITION NO. #1461
BARRIS, SOTT, DENN & DRIKER, P.L.L.C.
211 W. FORT ST. FIFTEENTH FLOOR
DETROIT, MI 48226-2493
c/o JEFFREY M. STEFAN
PHONE #313-965-9793



-REQUESTED CONVERSION TO EASEMENT

ATLANTA - 266.59'

(FOR OFFICE USE ONLY)

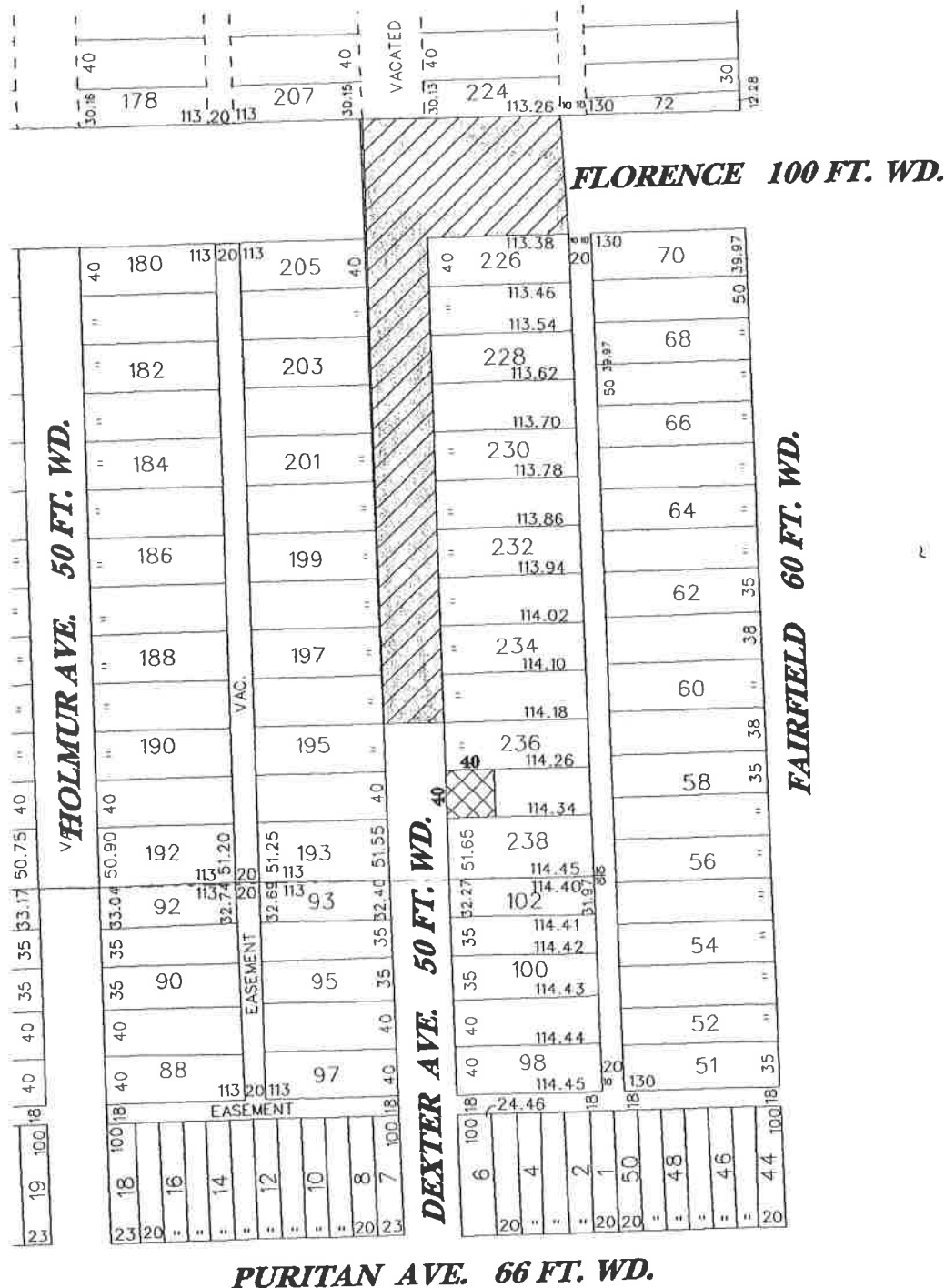
CARTO 57b

B						REQUESTED CONVERSION TO EASEMENT ATLANTA 50 FT. WD. IN THE AREA OF DEVINE, MACON AND DETROIT TERMINAL 66 FT. WD.	CITY OF DETROIT CITY ENGINEERING DEPARTMENT SURVEY BUREAU
	A						
DESCRIPTION		DRWN	CHKD	APPD	DATE	REQUESTED CONVERSION TO EASEMENT ATLANTA 50 FT. WD. IN THE AREA OF DEVINE, MACON AND DETROIT TERMINAL 66 FT. WD.	DRWG. NO. x1461.dgn
DRAWN BY		REVISIONS					
DATE		APPROVED					
ahb 01/04/07		CHECKED APPROVED					

PETITION 3368
TAKTIX SOLUTIONS
211 FORT W. ST., SUITE 1620
DETROIT, MI 48226
c/o KAREN D. O'DONOGHUE
PHONE NO. 313-237-6381



REVISION



 **-DEDICATION OF AN EASEMENT**
(FOR A THREE POINT TURN AROUND)

 **-REQUESTED CONVERSION TO EASEMENT**

FLORENCE - 138.25'
DEXTER - 450'

(FOR OFFICE USE ONLY)

CARTO 25 C

B					
A					
	DESCRIPTION	DRWN	CHKD	APPD	DATE
REVISIONS					
DRAWN BY		CHECKED			
ahb					
DATE		APPROVED			
2/25/08					

REQUESTED CONVERSION TO EASEMENT A
PORTION OF DEXTER ST. 50 FT. WD., A
PORTION OF FLORENCE ST. 100 FT. WD. AND THE
DEDICATION OF LAND FOR A THREE POINT
TURN AROUND NORTH OF PURITAN AND
WEST OF HOLMUR.

CITY OF DETROIT
CITY ENGINEERING DEPARTMENT
SURVEY BUREAU
JOB NO. 01-01
DRWG. NO. x3368.dgn

PETITION NO. 2665
 HAL ARCHITECTURAL
 19800 WOODINGHAM DRIVE
 DETROIT, MI 48221
 c/o HARRY LEWIS
 PHONE NO. 313-862-8234



REVISION !!!

GOLDENGATE 50 FT. WD. JULY 10, 1985
J.C.C. PGS. 572-5

J.C.C. PGS. 1572-73	30	109.9	271	30	33	35	=	=	35
		110.16		110.42	110.71	111.01	111.32	111.62	111.93
VAC.									

15	87.68	235	30	87.55	233	87.19	231	86.95	53.24
				87.43			87.07		229
									86.73

HILDALE 50 FT. WD.

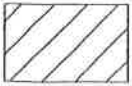
30	=	=	=	30	52.83
100	236	238	240	242	52.56
				100	

15	VACATED	3-30-88	J.C.C. PGS. 763-64	15	
169.55	80.85	280	278	276	275
113.64	100	100			100
		30			30

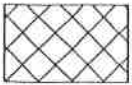
GRIXDALE 50 FT. WD. J.C.C. PGS. 2401-2
VACATED
10-19-71

OMIRA 50 FT. WD.

HILDALE -259.90'



- REQUESTED CONVERSION TO EASEMENT



- REQUESTED OUTRIGHT VACATION

(FOR OFFICE USE ONLY)

CARTO 36B

B					
A					
DESCRIPTION		DRWN	CHKD	APPD	DATE
REVISIONS					
DRAWN BY	NP	CHECKED			
DATE	6-19-08	APPROVED			

REQUESTED OUTRIGHT VACATION AND CONVERSION TO EASEMENT A PORTION OF HILDALE ST. 50 FT. WD. WEST OF OMIRA AVE. AND BETWEEN GOLDENGATE AND GRIXDALE.

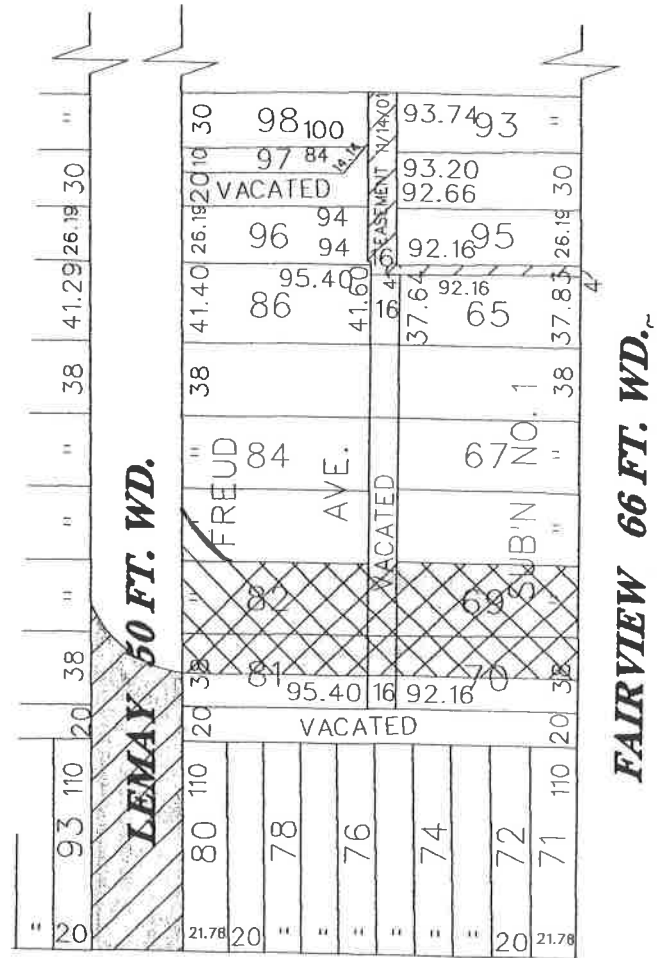
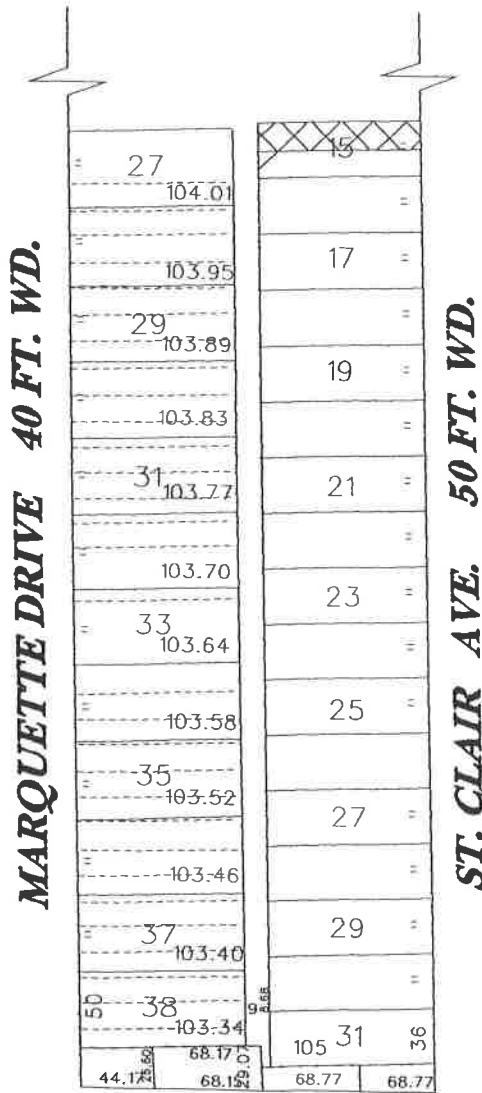
CITY OF DETROIT CITY ENGINEERING DEPARTMENT SURVEY BUREAU	
JOB NO.	01-01
DRWG. NO.	x2665(2008).DCN

PETITION NO. #1245
METCO SERVICES (EDC)
1274 LIBRARY, SUITE 400
DETROIT, MI 48226
c/o JAMES D. FOSTER
PHONE NO. 313-961-4560 FAX 313-961-1698



E. JEFFERSON 120 FT. WD.

E. JEFFERSON 120 FT. WD.

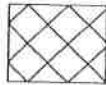


FREUD 60 FT. WD.

FREUD 60 FT. WD.

doesn't exist

*LEMAY - 202'
CONNECTER + 261.56'*



-DEDICATION



-REQUESTED CONVERSION TO EASEMENT

(FOR OFFICE USE ONLY)

CARTO 54B

B					
A					
DESCRIPTION	DRWN	CHKD	APPD	DATE	
REVISIONS					
DRAWN BY	CHECKED				
DATE	APPROVED				
3/1/07					

REQUEST DEDICATION OF LAND TO CREATE A NEW ALLEY RIGHT-OF-WAY, DEDICATION OF LAND TO RE-ROUTE LEMAY AVE., AND VACATION AND CONVERSION TO EASEMENT A PORTION OF LEMAY AVE. NORTH OF FREUD ST.

CITY OF DETROIT
CITY ENGINEERING DEPARTMENT
SURVEY BUREAU
JOB NO. 01-01
DRWG. NO. x1245.dgn