

NOTE: UTILITY INFORMATION ON THIS DRAWING MAY BE FROM INFORMATION DISCLOSED TO THIS FIRM BY THE VARIOUS UTILITY COMPANIES, CITY/COUNTY AGENCIES AND OTHER VARIOUS SOURCES. UNDERGROUND UTILITIES WHICH ARE ON PRIVATE PROPERTY ARE USUALLY NOT DELINEATED UPON A UTILITY COMPANY'S PUBLISHED PLANS. THEIR LOCATION, IF SHOWN UPON THIS SURVEY, ARE APPROXIMATED FROM FOUND PAINT MARKS/STAKES, ETC. AS LOCATED BY THIS FIRM FROM SOURCES WHICH ARE UNKNOWN. NO GUARANTEE IS GIVEN AS TO THE COMPLETENESS OR ACCURACY THEREOF.

PRIOR TO CONSTRUCTION, ALL LOCATIONS AND DEPTHS OF EXISTING UTILITIES (IN CONFLICT WITH PROPOSED IMPROVEMENTS) SHALL BE VERIFIED IN THE FIELD. CALL MISS DIG 3 WORKING DAYS PRIOR TO CONSTRUCTION.

COPYRIGHT © 2007 SPALDING DEDDECKER ASSOCIATES, INC. THIS DRAWING AND THE SUBJECT MATTER CONTAINED THEREON IS PROPRIETARY AND IS NOT TO BE USED OR REPRODUCED WITHOUT WRITTEN PERMISSION OF SPALDING DEDDECKER ASSOCIATES, INC.

CLIFFORD-BAGLEY
CLIFFORD-TIMES SQ.
ADA RAMP DESIGN
GRADING PLAN

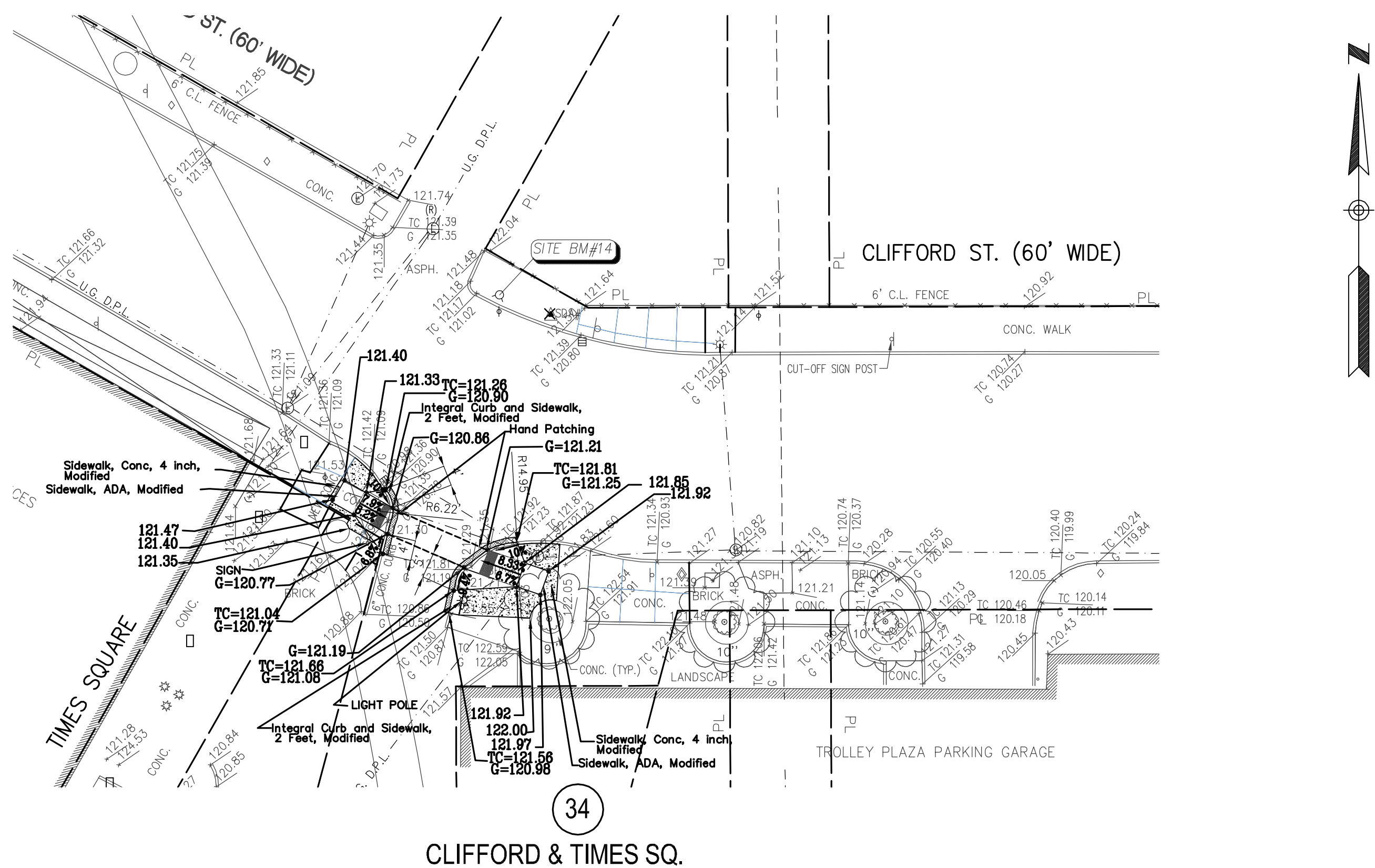
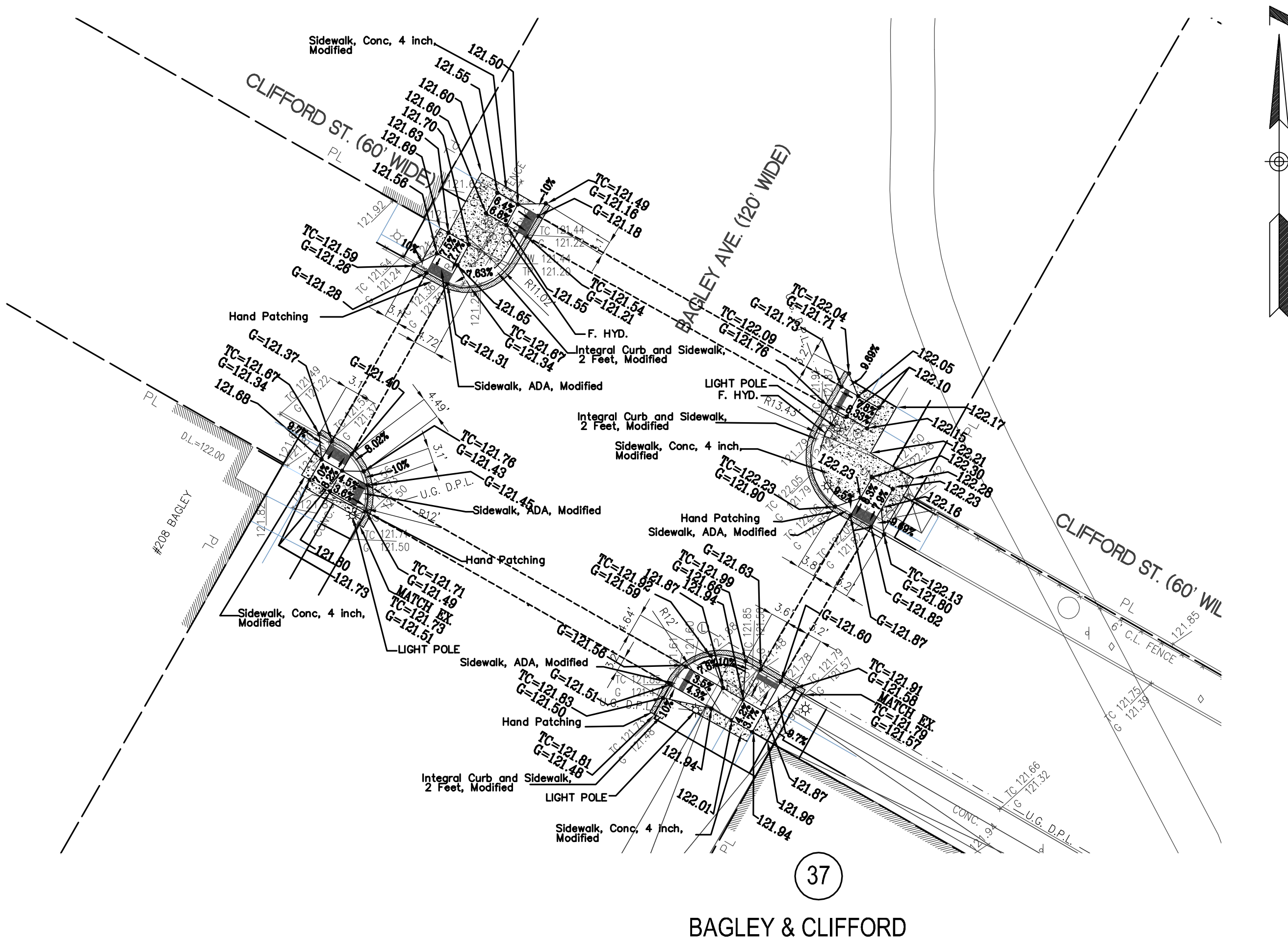
SECTION	TOWN	RANGE
CITY OF DETROIT	WAYNE	COUNTY

NO.	DATE	REVISION
	11/01/07	REV. PER CED
	01/10/08	REV. PER CED

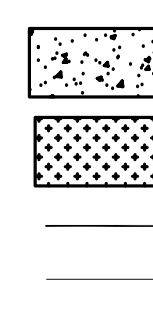
SHEET NO 097

DRAFTER	DATE
DESIGNER	DATE
CHECKED	DATE
PROJECT MANAGER	BID PLAN DATE
DEPARTMENT MANAGER APPROVAL	DATE

VERIFY SCALES	
BAR IS ONE INCH ON ORIGINAL DRAWING IF NOT ONE INCH ON THIS SHEET, ADJUST SCALES ACCORDINGLY	
JOB NO.	DRAWING NO.
DE06001_OT	DE06001ADA
SCALE:	SHEET NO.
1" = 20'	S-3



LEGEND



BENCHMARK DESCRIPTIONS

BM#28-353A	FOUND CITY OF DETROIT CONTROL DISK IN MONUMENT BOX IN SIDEWALK AT THE NORTHEAST CORNER OF FORT STREET AND WASHINGTON BLVD.
SITE BM#11	ARROW ON HYDRANT LOCATED ON THE NORTHWEST CORNER OF WOODWARD AVENUE AND CLIFFORD STREET.