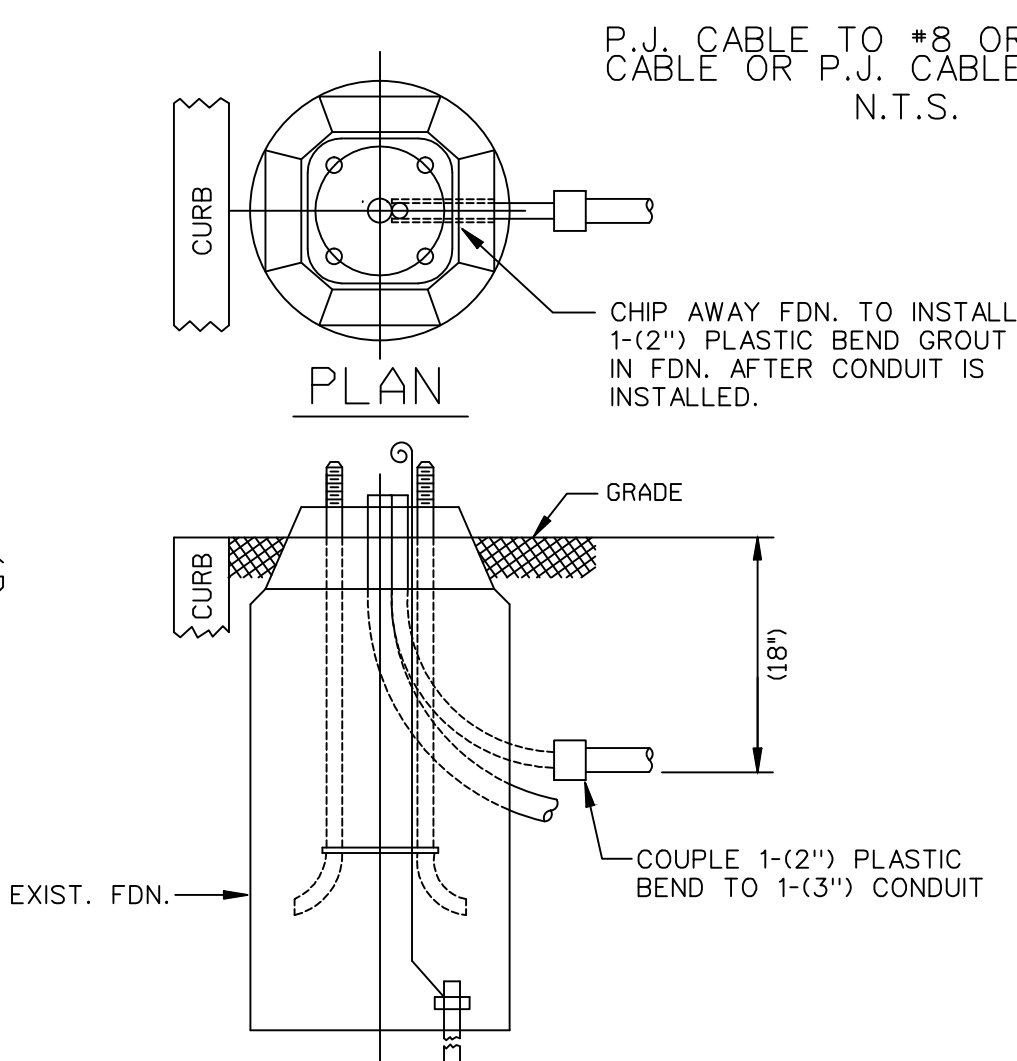
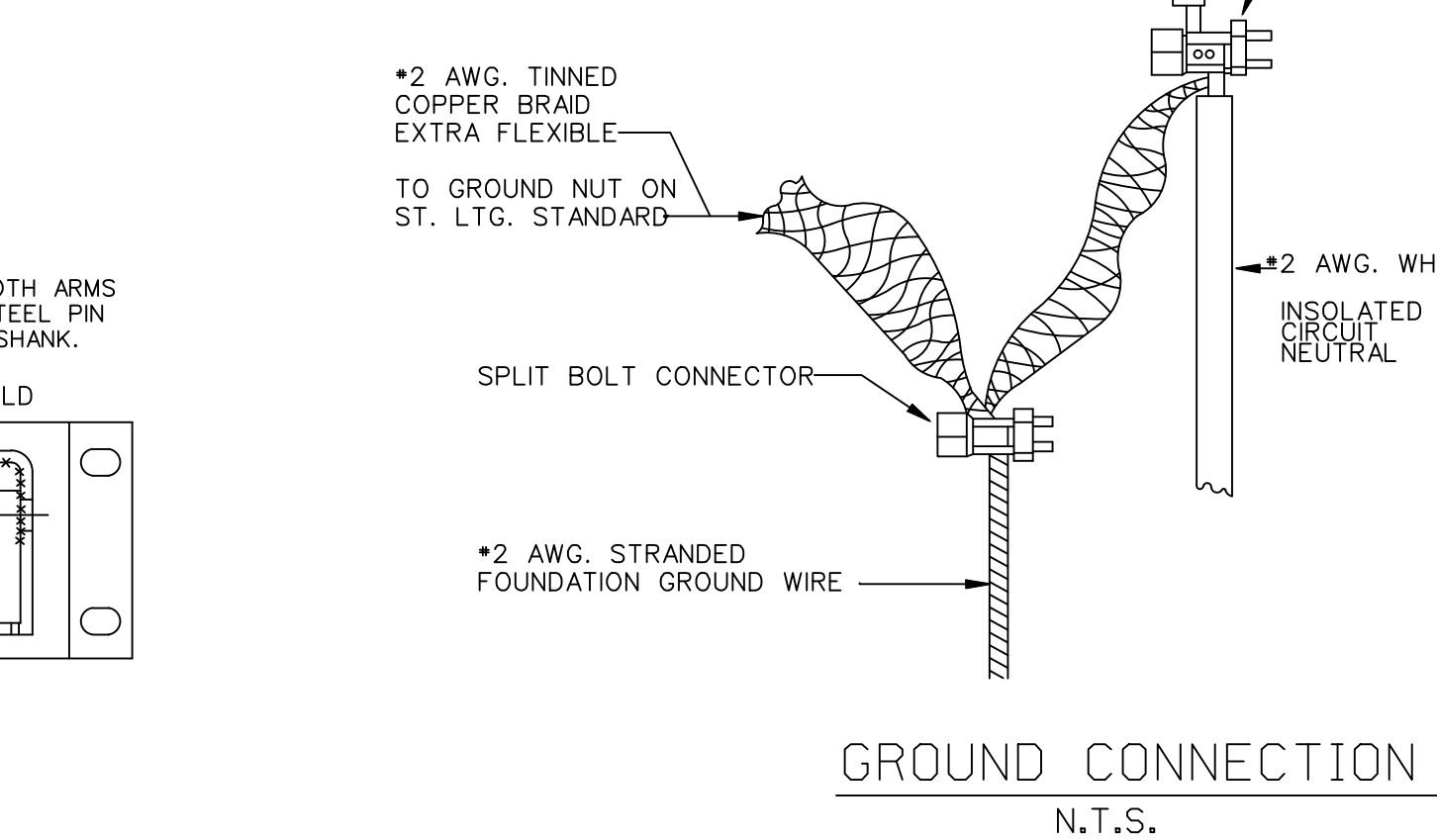


### TRAFFIC SIGNAL SECONDARY OR MULTIPLE STREET LIGHTING SPLICE DETAIL "A"

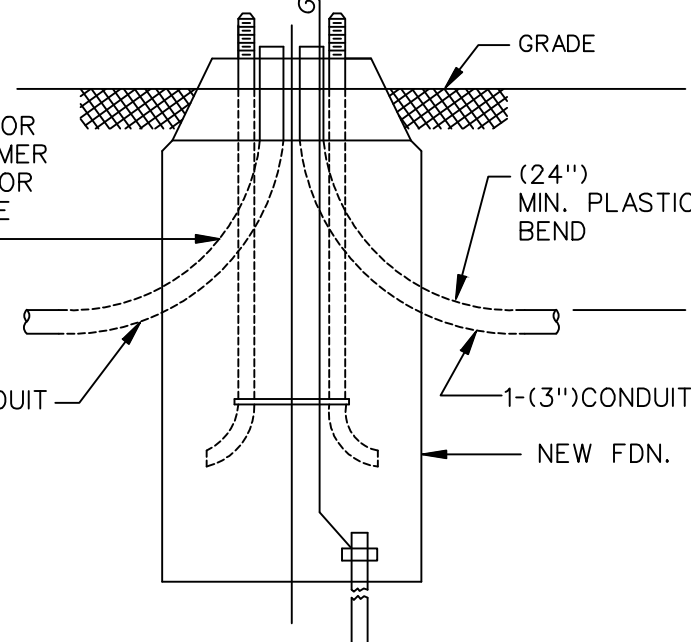


### DETAIL OF INSTALLING CONDUITS INTO EXISTING FDN.



NOTE:

THIS DETAIL TYPICAL FOR USE WITH A TRANSFORMER BASE STD. WHEN ANCHOR BASE STD. IS USED, TIE CONDUITS TOGETHER.



### SECTION D-D DETAIL OF INSTALLING CONDUITS IN & OUT OF NEW FDN.

N.T.S.

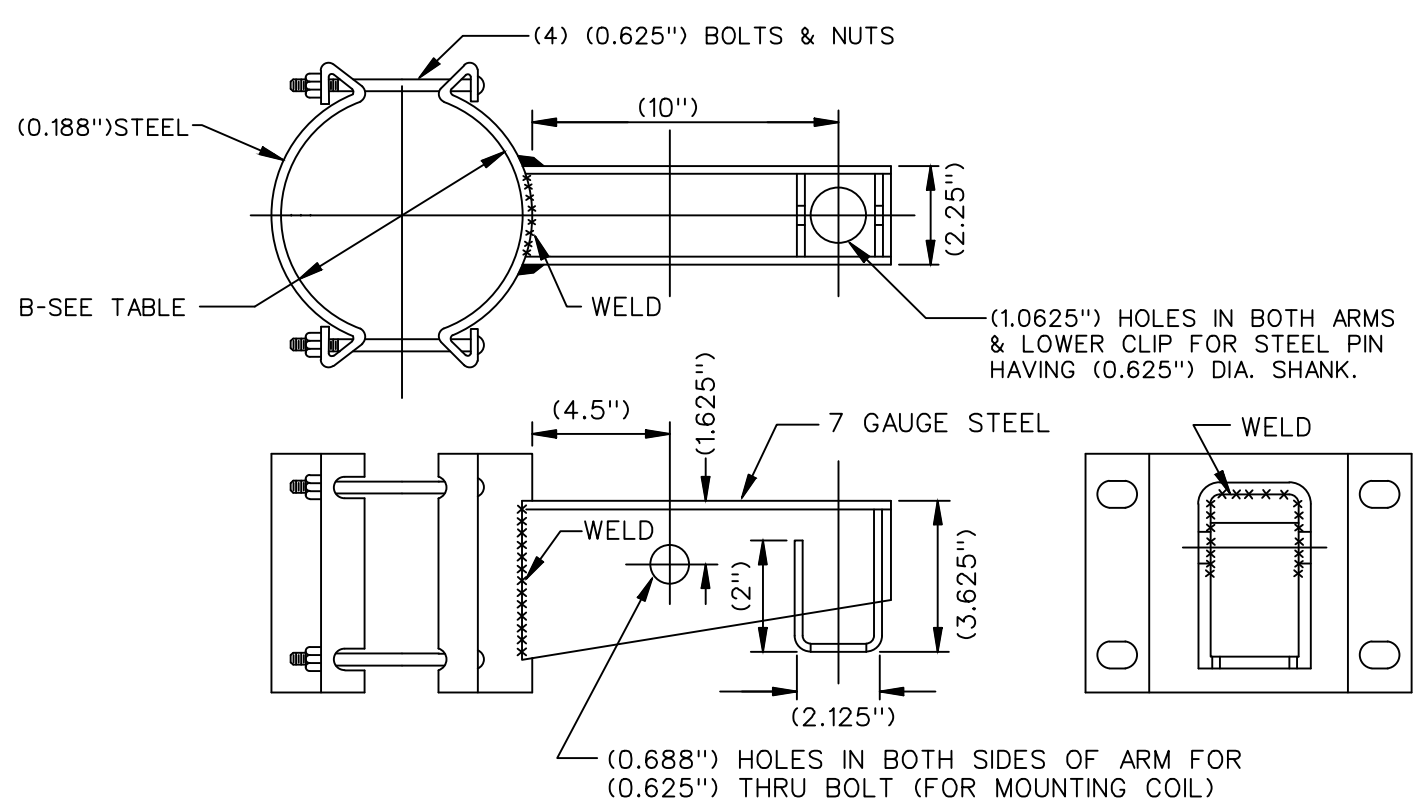
### CLAMP ON BRACKET ARM ELEVATION

N.T.S.



NOTE: ENTIRE BRACKET ASSEMBLY, EXCEPT MOUNTING HARDWARE, TO BE HOT DIP GALVANIZED

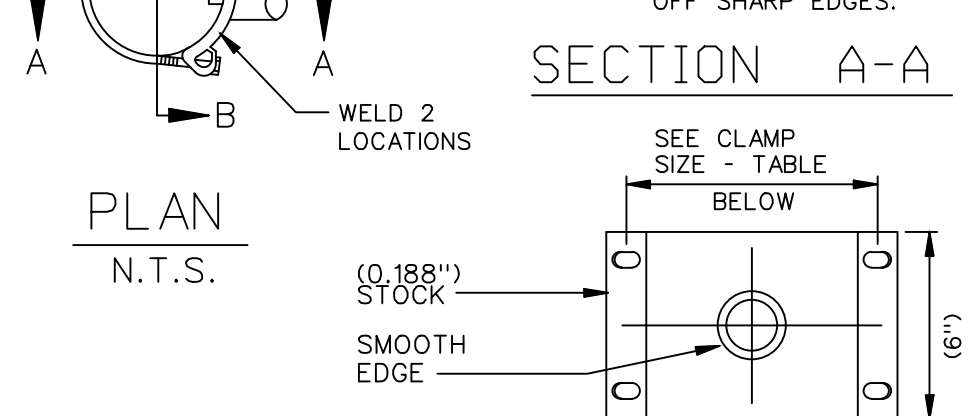
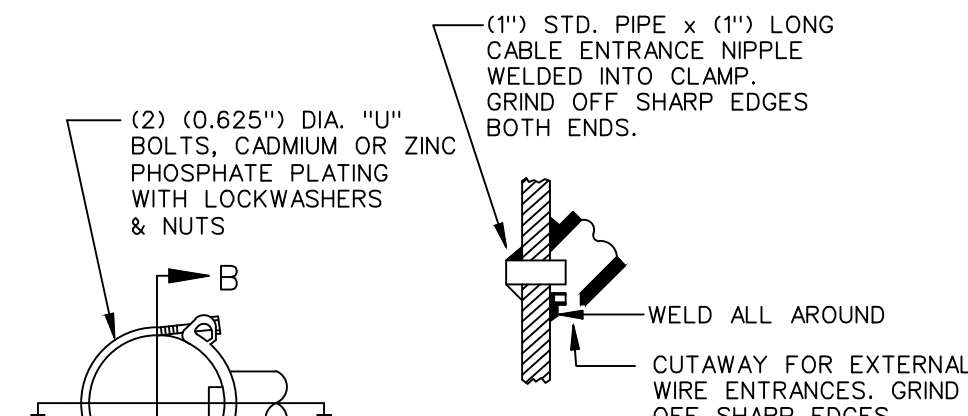
AFTER REMOVAL OF EXISTING LUMINAIRE & BRACKET ARM PLUG ALL OPENINGS IN SHAFT.



\* FINISH SHALL BE HOT DIP GALVANIZED AFTER FABRICATION

### CLAMP FEEDER ARM

N.T.S.



### CLAMP SIZE TABLE

TYPE	POLE DIAMETER
A	(3.6")-(4.5")
B	(6.1")-(6.9")
C	(7.5")-(8.5")

### PIPE CLAMP DETAILS

N.T.S.

### SERIES-TO-MULTIPLE LIGHTING CONVERSION POLE BASE CONNECTIONS

N.T.S.

